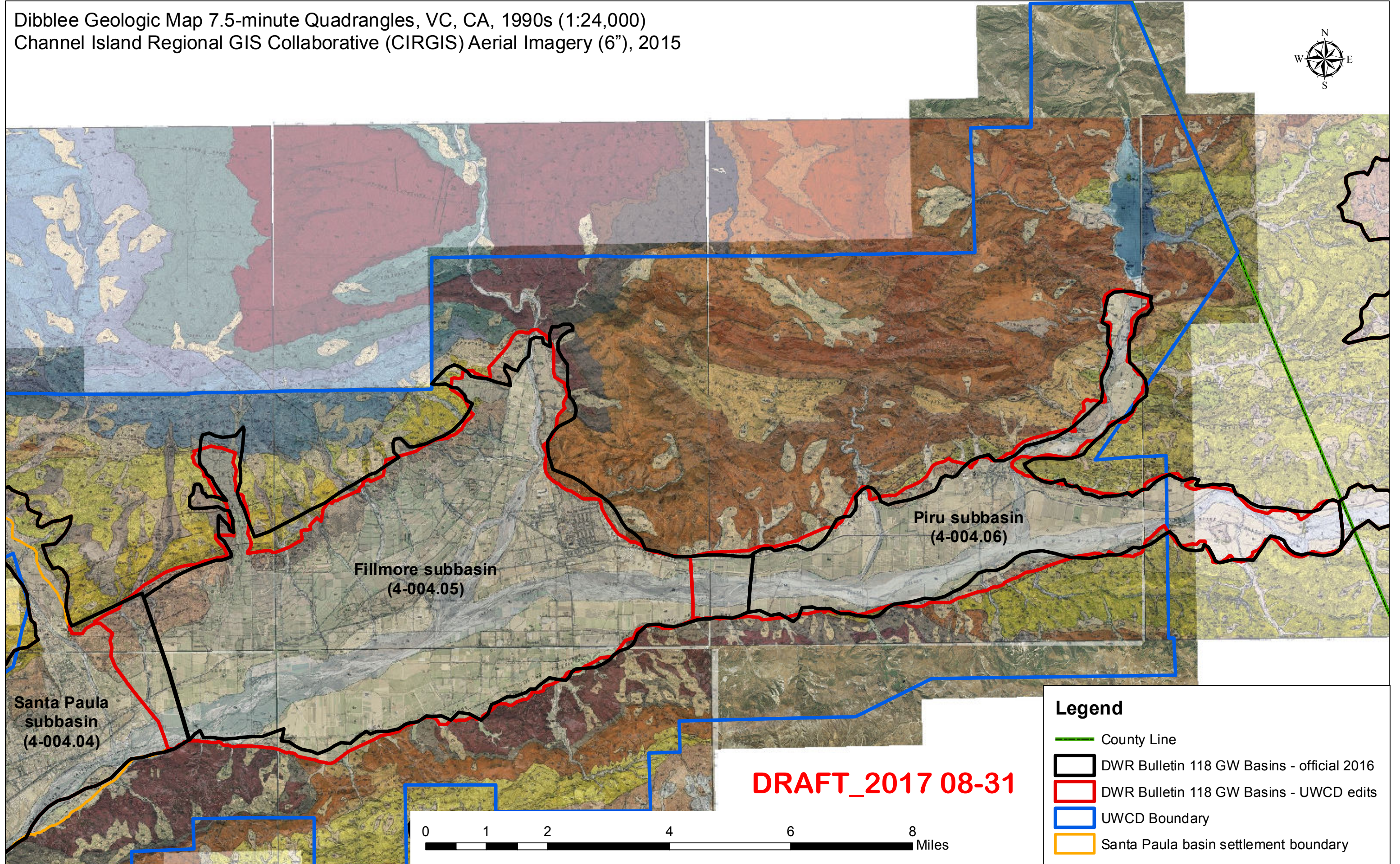


Dibblee Geologic Map 7.5-minute Quadrangles, VC, CA, 1990s (1:24,000)
Channel Island Regional GIS Collaborative (CIRGIS) Aerial Imagery (6"), 2015



Legend

- County Line
- DWR Bulletin 118 GW Basins - official 2016
- DWR Bulletin 118 GW Basins - UWCD edits
- UWCD Boundary
- Santa Paula basin settlement boundary

DRAFT_2017 08-31

0 1 2 4 6 8 Miles

Fillmore Subbasin (4-004.05) Boundary edits

Scale digitized = 1:10,000.

Western Boundary

1. Snapped boundary to Santa Paula Basin Settlement Boundary (stipulated judgment boundary).

Eastern Boundary

1. Boundary approximated from peak of rising groundwater and property lines (Southside Improvement Company mapped in Fillmore subbasin).

Northern Boundary

Source of edits: Geologic Map of the Fillmore Quadrangle, VC, CA By Dibblee, 1990 (1:24:000).

Geologic Map of the Santa Paula Peak Quadrangle, VC, CA By Dibblee, 1990 (1:24:000).

Channel Island Regional GIS Collaborative (CIRGIS) Aerial Imagery (6"), 2015; and other available aerial imagery.

1. Northwest Boundary: Followed QTlp/QTlc (Los Posas Sand) and Tp/QTpm (Pico Formation) contact with surficial sediments and landslide debris. QTs (Saugus Formation) was included as part of the subbasin. The digitized contact boundaries were checked against recent available aerial imagery and minor adjustments were made.
2. Northeast Boundary: Followed Tsp (Sespe Formation), Tr (Rincon Shale) and Tm/Tml/Tmsu (Monterey Formation) contact with surficial sediments and landslide debris. The digitized contact boundaries were checked against recent available aerial imagery and minor adjustments were made.

Southern Boundary

Source of edits: Geologic Map of the Fillmore Quadrangle, VC, CA By Dibblee, 1990 (1:24:000).

Geologic Map of the Santa Paula Quadrangle, VC, CA By Dibblee, 1992 (1:24:000).

Geologic Map of the Moorpark Quadrangle, VC, CA By Dibblee, 1992 (1:24:000).

Channel Island Regional GIS Collaborative (CIRGIS) Aerial Imagery (6"), 2015; and other available aerial imagery.

1. Followed Tsp (Sespe Formation), Tcva? (Conejo Volcanics), Tts (Topanga Sandstone), Tm (Monterey Formation) and Tsq (Sisquoc Formation) contact with surficial sediments and landslide debris. The digitized contact boundaries were checked against recent available aerial imagery and minor adjustments were made.

Piru Subbasin (4-004.06) Boundary edits

Scale digitized = 1:10,000.

Western Boundary

1. Boundary approximated from peak of rising groundwater and property lines.

Eastern Boundary

1. Boundary not changed.

Northern Boundary

Source of edits: Geologic Map of the Fillmore Quadrangle, VC, CA By Dibblee, 1990 (1:24:000).

Geologic Map of the Piru Quadrangle, VC, CA By Dibblee, 1991 (1:24:000).

Geologic Map of the Val Verde Quadrangle, VC, CA By Dibblee, 1993 (1:24:000).

Channel Island Regional GIS Collaborative (CIRGIS) Aerial Imagery (6"), 2015; and other available aerial imagery.

1. Followed Tm (Monterey Formation), Tsq? (Sisquoc Formation) and Tp/Tps/Tpsg (Pico Formation) contact with surficial sediments and landslide debris. QTs (Saugus Formation) was included as part of the subbasin. The digitized contact boundaries were checked against recent available aerial imagery and minor adjustments were made.

Southern Boundary

Source of edits: Geologic Map of the Fillmore Quadrangle, VC, CA By Dibblee, 1990 (1:24:000).

Geologic Map of the Piru Quadrangle, VC, CA By Dibblee, 1991 (1:24:000).

Geologic Map of the Val Verde Quadrangle, VC, CA By Dibblee, 1993 (1:24:000).

Channel Island Regional GIS Collaborative (CIRGIS) Aerial Imagery (6"), 2015; and other available aerial imagery.

1. Followed Tts (Topanga Sandstone), Tr (Rincon Shale), QTlp (Las Posas Sand), Ttos (Towsley Formation), Tp/Tpc (Pico Formation) contact with surficial sediments and landslide debris. QTs (Saugus Formation) was included as part of the subbasin. The digitized contact boundaries were checked against recent available aerial imagery and minor adjustments were made.