

United Water Conservation District Scope and Schedule for GSP Development

*Agenda Item 10A,
FPBGSA Board of Directors Meeting*

October 25, 2018



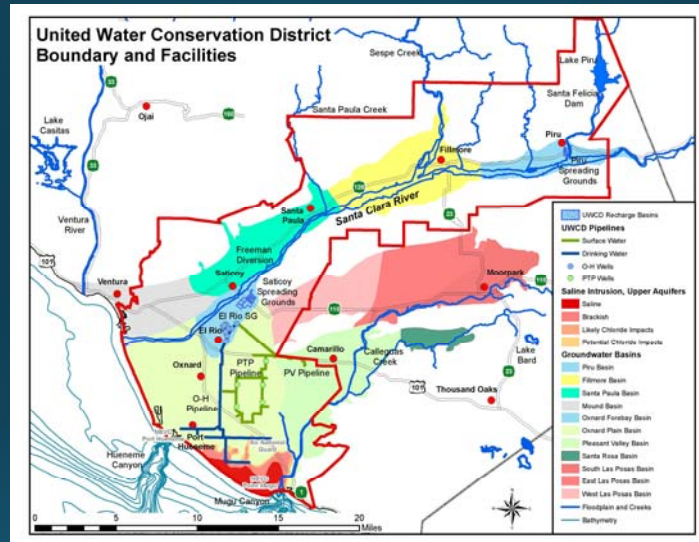
Fillmore and Piru Basins
Groundwater Sustainability Agency



UnitedWater
CONSERVATION DISTRICT

Outline

1. United's overall role ("the big picture")
2. Main components of a GSP
3. United's planned contributions to the Fillmore and Piru basins GSPs
4. Schedule/timeline



"The Big Picture"

1. United's overall role

3

What United Is...

- A public agency authorized under the California Water Code, section 74500 et al, to:
 - conduct water resource investigations
 - acquire water rights
 - build facilities to store and recharge water
 - construct wells and pipelines for water deliveries
 - commence actions involving water rights and water use, and to prevent interference with or diminution of stream/river flows and associated natural subterranean flows
 - other activities
- Deeply invested in supporting the people, economy, and environment within our service area.

4

Consistent with United's Mission, We Have:

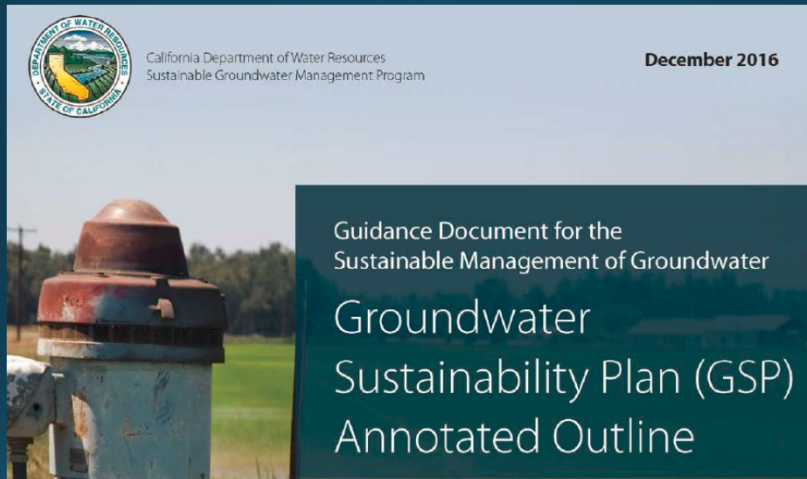
- Collected a **LOT** of groundwater and surface-water data
 - levels, quality, flows
- Made extensive progress on development of a numerical groundwater flow model for the region
 - VRGWFM
- Provided support, oversight, and/or review of every GSP being developed in our service area

5

What United is ***Not***...

- A consulting firm; therefore, we are ***not***:
 - Interested in competing with private sector firms
 - Trying to use Fillmore-Piru basins as a “springboard” to get more work in other basins
 - Allowed to make a profit—or lose money—in the course of our efforts that are specifically for the benefit of the FPBGSA (or any other GSAs)

6



2. Main components of a GSP

7

GSP Chapters 1 through 3

Sections with major United contributions shown in **red**.

Sections with lesser United support shown in **yellow**.

1. Introduction

- Agency info, legal authority, costs of implementing GSP and how the GSA will meet those costs

2. Plan Area and Basin Setting

- Description of plan area, communications, **basin setting, historical and current conditions, water budget, management areas** (if needed)

3. Sustainable Management Criteria

- Sustainability goal, **minimum thresholds, measurable objectives, undesirable results, monitoring**

8

GSP Chapters 4 through 6

Sections with major United contributions shown in **red**.
Sections with lesser United support shown in **yellow**.

4. Projects and Management Actions to Achieve Sustainability Goal

- Forecast how projects (if needed) and management actions will achieve goals

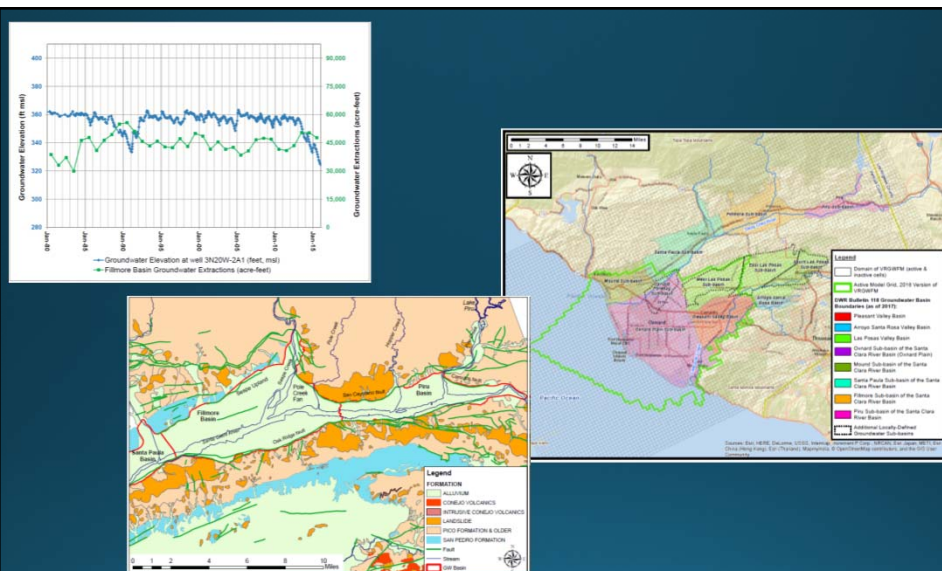
5. Plan Implementation

- Estimate costs, schedule, **reporting and evaluation requirements**

6. References and Technical Studies

- Coordination agreements, **technical appendices, model documentation, comments/responses**

9



3. United's planned contributions to the Fillmore and Piru basins GSPs

10

Planned Major Contributions

- Compile and share existing groundwater and surface-water data
- Provide information on existing monitoring network, assist with evaluation of data gaps
- Prepare preliminary water budget (from existing data)
- Develop conceptual model (hydrologic and hydrostratigraphic)
- Expand numerical model up SCR Valley
 - Will provide more specifics on water budget than the conceptual model could
 - Evaluate future projects, if needed
- Prepare text, figures, maps, and tables required for portions of GSP Section 2

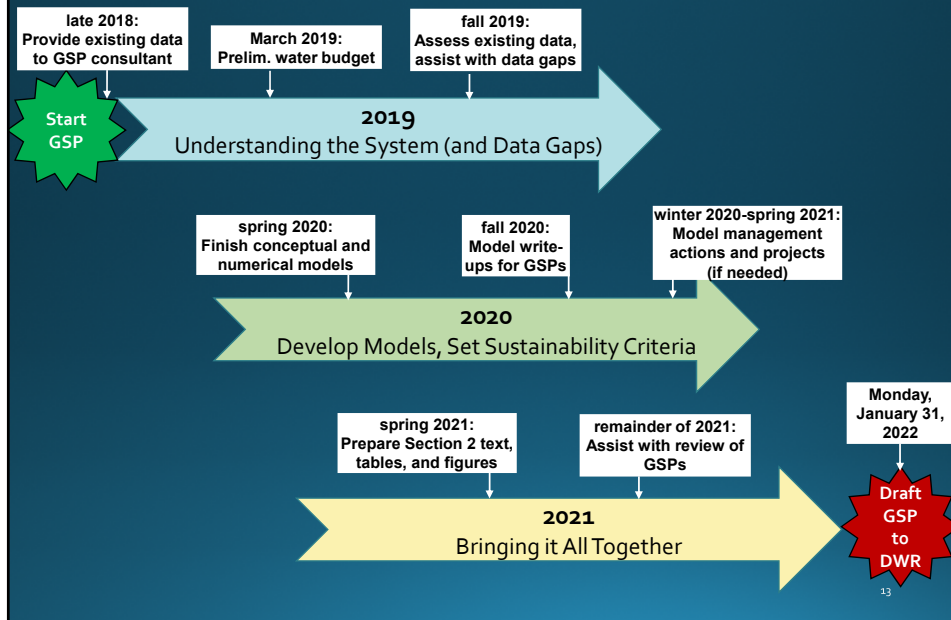
11

Planned Supportive Contributions

- Provide assistance and review to GSP consultant on the following:
 - Data gap analysis and recommendations for future data collection
 - Development of a plan for monitoring of sustainable management criteria
 - Development of projects and management actions (if needed)
 - Presentations for Board and public meetings/workshops
 - Review of draft GSP

12

4. Schedule/Timeline for United's Contributions



Thank you!