

GSP Update

- Tentative project schedule
- Database Management System (DBMS)

Water Level

Water Quality

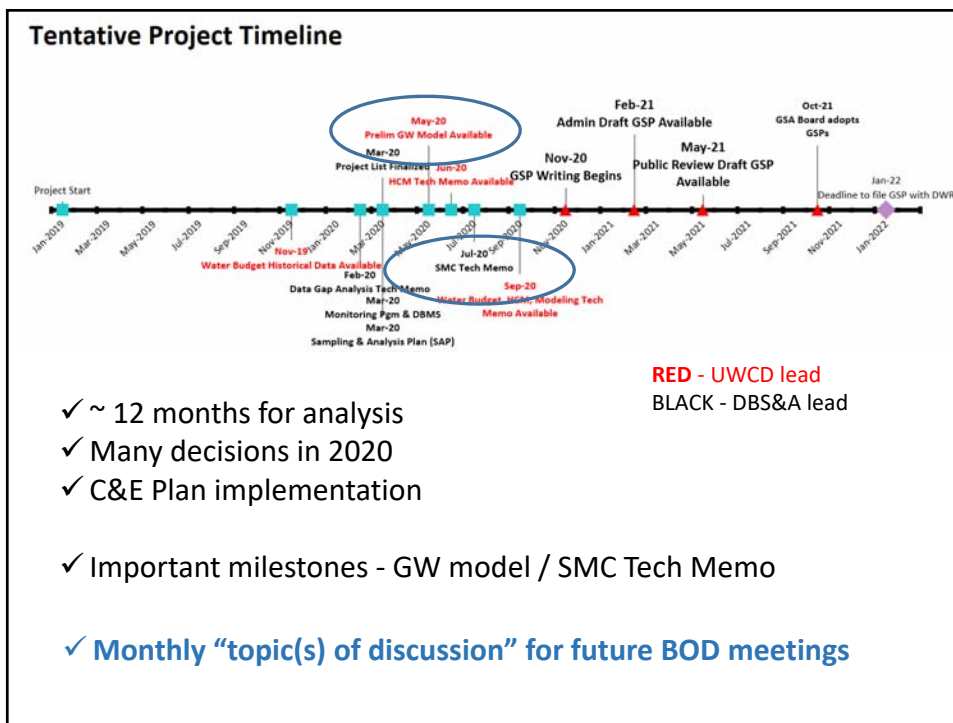
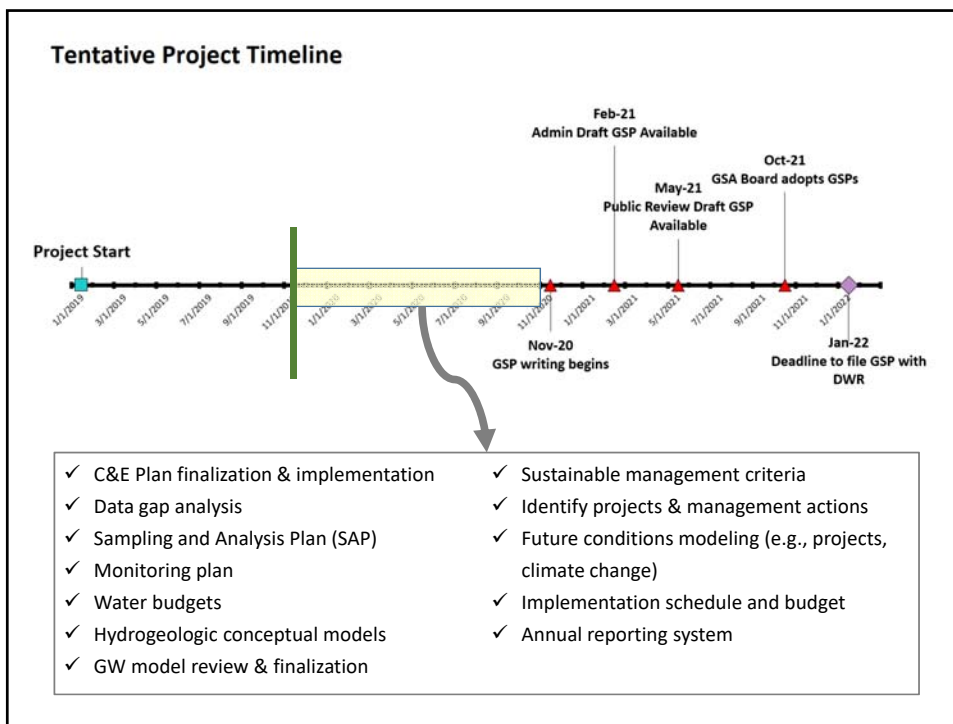
Stream Flow

Tentative Project Timeline

Administrative Draft GSP
Focus-Board review of overall approach (full board or ad hoc committee); 30 day review period

Public Review Draft GSP
Focus- Solicit stakeholder input; further Board review of overall approach; 60 day review period

Final GSP
Focus- Board considers adoption of document; includes responses to comments



Possible “topics of discussion”:

- ✓ Potential projects list
- ✓ Sustainable Management Criteria (SMC)
- ✓ Basin hydrogeology
- ✓ Water budget / Water balance
- ✓ Hydrogeologic conceptual model
- ✓ Groundwater model
- ✓ Data gaps and how to minimize
- ✓ Monitoring program
- ✓ Future conditions
- groundwater modeling (e.g., projects, climate change)
- ✓ Implementation schedule / budget
- ✓ Annual reporting system

Suggested Schedule/List of topics for future BOD meetings at December meeting

“Project list” - Jan 2020

Reference Library

FLASH DRIVES CONTAIN KEY REFERENCE DOCUMENTS (BEST MANAGEMENT PRACTICES, GUIDANCE DOCUMENTS, ETC.)

DWR SGMA Guidance Documents

- Climate Change Guidance - SGMA.pdf
- GSP Annotated Outline.pdf
- Guidance Document for Groundwater Sustainability Plan - Stakeholder Communication and Engagement.pdf
- Guidance Document for Sustainable Management of Groundwater - Engagement with Tribal Governments.pdf
- Preparation Checklist for GSP Submittal.pdf

DWR SGMA Best Management Practices

- BMP 1 Monitoring Protocols Standards and Sites.pdf
- BMP 2 Monitoring Networks and Identification of Data Gaps.pdf
- BMP 3 Hydrogeologic Conceptual Model.pdf
- BMP 4 Water Budget.pdf
- BMP 5 Modeling.pdf
- BMP 6 Sustainable Management Criteria DRAFT.pdf
- BMP Framework.pdf

SGMA DWR Informational Brochures

- Domestic Well Users Brochure - English Version.pdf
- SGMA Interagency Brochure - English Version.pdf

Groundwater Background References

- Basic GW Hydrology USGS WSP2220.pdf
- Ground Water Manual USBR.pdf
- GW SW Single Source USGS Circ1139.pdf
- What is GW USGS OFR93-643.pdf

GSA-GSP Suggested Practice by Others

- Getting Involved in Groundwater Toolkit.pdf
- GSA Governance_2016-03-08.pdf
- Guide to Water Quality Requirements SGMA.pdf
- GW Pumping Allocations SGMA Env Def Fund.pdf

★ GSP Emergency Regulations



SGMA Legislation

- 2014 Sustainable Groundwater Management Legislation with 2015 amends 1-15-2016.pdf

Database Management System

- Why do we need / want a DBMS?
 - Organize data
 - Archive data
 - Ease of use by stakeholders & FPBGSA staff
 - Support DWR data inquiries
 - Annual reports to DWR or others
 - DWR says so... *Section 352.6 Data Management System of Regulations*
- Can be simple or complex
 - DWR Water Data Library
 - Cuyama Basin
 - County of San Bernardino Landfills



<https://opti.woodardcurran.com/cuyama/login.php>

<https://landfilldata.gladata.com/default.aspx>