



Panel Session 2 -Outreach Success: From Local Understanding to Basin-wide Consensus

Panelists:

- Piret Harmon, Santa Margarita Groundwater Agency
- John Covington, Morongo Band of Mission Indians
- Supervisor Kelly Long, Fillmore-Piru Basins GSA

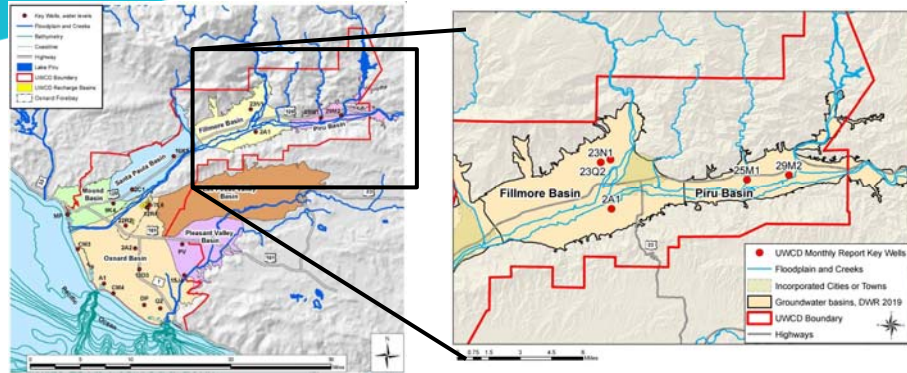
Moderator — Dave Ceppos, Sacramento State , Consensus and Collaboration Program



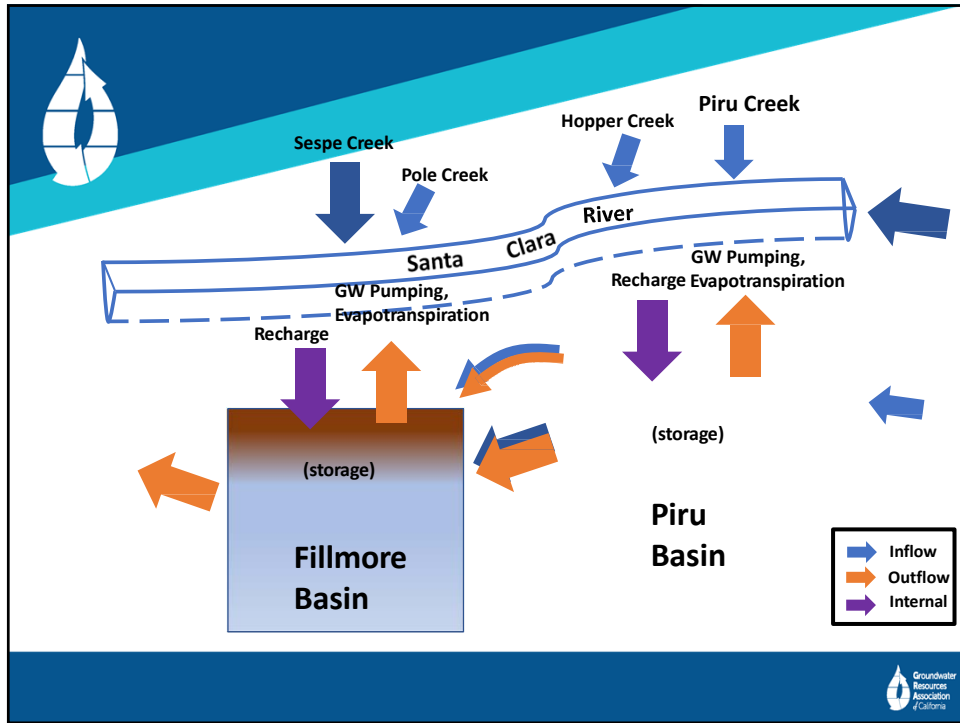
1



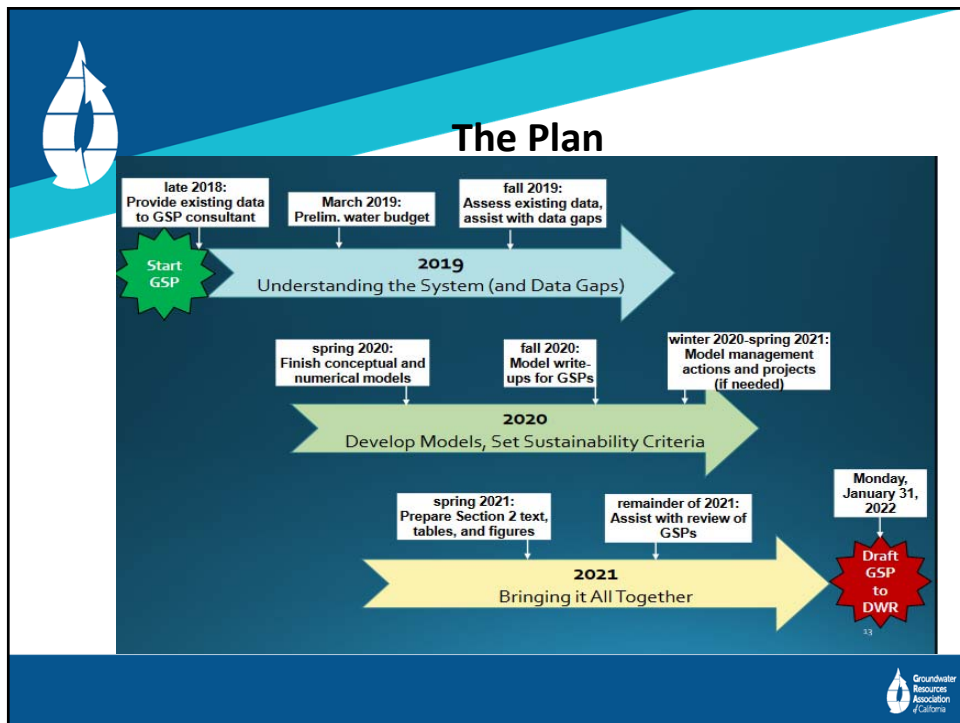
Fillmore and Piru Basins



2



3



4



What FPBGSA has Accomplished

- Awarded \$1.5 Million Grant from CA DWR
- Hired Daniel B. Stephens & Associates to Initiate Groundwater Sustainability Planning
- Completed Basins Boundaries Modifications
- Coordinate with Well Owners Following Basins Boundaries Modifications
- Continued to progress on Groundwater Sustainability Planning
- Educating both the Board and the Public



5




Vital Communication Tools









6




What FPBGSA has Accomplished, continued

- Established Guiding Principles for GSA (adopted November 2019)
- Developed and Implemented a Stakeholder Engagement Plan (adopted February 20, 2020)
Interrupted by COVID-19 pandemic, 1st Workshop scheduled for June 25!
- Completed Calibration of Extension of Groundwater Model to Fillmore & Piru Basins
Documentation & Peer Review (serves as matching funds for grant)
- Monitoring Wells to Close Priority Data Gaps
 - Site Wells Based Upon Data Gaps and Procure Easements, CEQA
 - Construction of Wells delayed to FY 2021 due to budget considerations




7



Challenges

- Learning to be on a Joint Powers Authority (County of Ventura, City of Fillmore, United Water Conservation District). Commitment must be to fulfill the purpose of the JPA role. NOT the purpose of the individual member agency or to “keep an eye” on other members.
- Continued local outreach. Important to remember that the heart of the hard fought battle in SGMA for local control is the local input.
 - Technical data and stakeholder data are co-equal under SGMA.
 - Learning how stakeholders experience GW challenges is the essence of supporting local control.



8