



Fillmore and Piru Basins
Groundwater Sustainability Agency

Board of Directors Meeting
Thursday
May 20, 2021
5:00 p.m.

In accordance with the California Governor's Executive Stay at Home Order and the County of Ventura Health Officer Declared Local Health Emergency and Be Well at Home Order resulting from the novel coronavirus (COVID-19), the Fillmore City Hall is closed to the public. Therefore, the FPB GSA will be holding its Regular Board of Directors meeting virtually using the ZOOM video conferencing application.

If you are new to ZOOM video conferencing, please visit this help page in advance of the meeting date and time:
<https://support.zoom.us/hc/en-us/articles/201362193-How-Do-I-Join-A-Meeting->

To participate in the Board of Directors meeting via Zoom, please access:

<https://us02web.zoom.us/j/82477092074?pwd=SkJoa2hhZk5pUG1wZzJLa3V5dGZsQT09>

Meeting ID: **824 7709 2074**

Password: **FPBGSA**

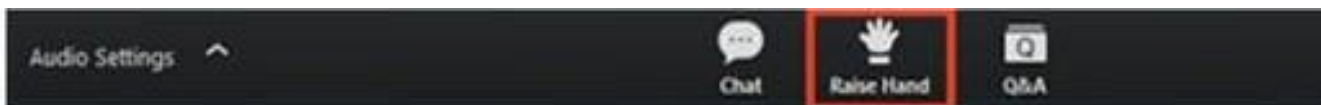
To hear just the audio portion of the meeting, phone into the toll-free number 877 853 5247

Meeting ID: **824 7709 2074**

All participants are asked to join the meeting at least five minutes in advance of the 5pm start time and be aware that all participants will be "muted" until recognized by the host. If your computer has a camera, please enable it so we can ensure better engagement between participants.

If you would like to address the Board with a question or offer a comment, please follow these simple instructions to engage the host (Clerk of the Board):

1. During a meeting, click on the icon labeled "Participants" at the bottom center of your computer screen.
2. At the bottom of the window on the right side of the screen, click the button labeled "Raise Hand."
3. Once you've been recognized by the Chair, please click on "Raise Hand" again to remove the signal.



Similarly, if you have a comment or question for the Board, you can use the "Chat" button to convey your question or comment to the HOST, who will put you in line to address the Board.

The Fillmore and Piru Basins GSA Board of Directors appreciates your participation and patience in using Zoom to conduct its public meeting.

AGENDA

1. CALL TO ORDER

1A Pledge of Allegiance

1B Directors Roll Call

1C Public Comments

Fillmore and Piru Basins Groundwater Sustainability Agency (Agency) will accept public comment concerning agenda items at the time the item is considered and on any non-agenda item within the jurisdiction of the Board during the agendaized Public Comment period. No action will be taken by the Board on any non-agenda item. In accordance with Government Code § 54954.3(b)(1), public comment will be limited to three (3) minutes per speaker per issue.

**1D Approval of Agenda
Motion**

2. UPDATES

2A Director Announcements/Board Communications:
Oral Reports from the Board

Fillmore Pumpers Association Stakeholder Director Update

Piru Pumpers Association Stakeholder Director Update

Environmental Stakeholder Director Update

City of Fillmore Member Director Update

United Water Conservation District Member Director Update

County of Ventura Member Director Update

**2B Executive Director Update
Information Item**

The Executive Director will provide an informational update on Agency activities since the previous Board meeting of April 15, 2021.

**2C Legal Counsel Update
Information Item**

Legal Counsel will provide an informational update on Agency's legal issues and concerns since the previous Special Board meeting of April 15, 2021.

**2D GSP Consultant Update
Information Item**

Representatives from Daniel B Stephens & Associates and UWCD will provide an informational update on Agency's GSP development activities since the previous Board meeting of April 15, 2021.

3. CONSENT CALENDAR

All matters listed under the Consent Calendar are considered routine by the Board and will be enacted by one motion. There will be no separate discussion of these items unless a Board member pulls an item from the Calendar. Pulled items will be discussed and acted on separately by the Board. Members of the public who want to comment on a Consent Calendar item should do so under Public Comments. (ROLL CALL VOTE REQUIRED)

3A Approval of Minutes

The Board will consider approving the Minutes from the Board Meetings of April 15, 2021 and May 6, 2021, Special Board Meeting.

3B Approval of Warrants

The Board will consider approving payment of outstanding vendor invoices

- Daniel B. Stephens & Associates \$29,997.48
- Olivarez Madruga Lemeiux O'Neill LLP \$ 880.00
- Yamagishi Ranch \$ 238.68
- The Fillmore Gazette \$ 108.00
- County of Ventura IT Services Dept. \$ 71.88

3C Monthly Financial Report

The Board will receive the Agency's monthly profit and loss statement and balance sheet.

4. MOTION ITEMS

4A Fiscal Year 2020-2021 Budget Amendments

Motion

The Board will consider approving the proposed budget modifications for Fiscal Year 2020-2021.

4B Fiscal Year 2021-2022 Budget

Motion

The Board will receive the proposed budget and groundwater extraction fee rates for Fiscal Year 2021-2022 and provide comments and direction.

4C Resolution 2021-02 Approving the Monitoring Wells Project and CEQA Notice of Categorical Exemption Determination for the Monitoring Wells Project

Motion

The Board will consider adopting Resolution 2021-02 approving the Monitoring Wells Project and finding that the Project is Categorically Exempt from the California Environmental Quality Act and directing staff to file a Notice of Exemption.

4D Sustainable Management Criteria Development

Motion

The Board will consider adoption of the Agency's Sustainable Management Criteria matrix and associated management actions and studies and provide direction to Agency staff and consultant team toward development of the draft Groundwater Sustainability Plans.

4E Special Board Meeting

Motion

The Board will consider selecting a date for a Special Board Meeting in late May or early June 2021 to consider approval of the Sustainable Management Criteria matrix and associated management actions and studies.

FUTURE TOPICS FOR BOARD DISCUSSION

ADJOURNMENT

The Board will adjourn to the next **Regular Board Meeting** on Thursday, **June 17, 2021** or call of the Chair

Materials, which are non-exempt public records and are provided to the Board of Directors to be used in consideration of the above agenda items, including any documents provided subsequent to the publishing of this agenda, are available for inspection at UWCD's offices at 1701 N. Lombard Street in Oxnard during normal business hours.

The Americans with Disabilities Act provides that no qualified individual with a disability shall be excluded from participation in, or denied the benefits of, the District's services, programs or activities because of any disability. If you need special assistance to participate in this meeting, or if you require agenda materials in an alternative format, please contact the UWCD Office at (805) 525-4431 or the City of Fillmore at (805) 524-1500. Notification of at least 48 hours prior to the meeting will enable the District to make appropriate arrangements.

Approved: 
Board Chair Kelly Long

Posted: (date) May 17, 2021 (time) 5:00 pm (attest) Eva Ibarra
At: <https://www.FPBGSA.org>

Posted: (date) May 17, 2021 (time) 5:15 pm (attest) Eva Ibarra
At: <https://www.facebook.com/FPBGSA/>

Posted: (date) May 17, 2021 (time) 5:30 pm (attest) Eva Ibarra
At: UWCD, 1701 N. Lombard Street, Oxnard CA 93030



Board of Directors
Meeting ,Thursday
April 15, 2021
MINUTES

Directors Present

Director Kelly Long, Chair
Director Ed McFadden, Vice Chair/Secretary
Director Gordon Kimball
Director Candice Meneghin
Director Glen Pace
Director Christina Villaseñor

Staff Present

Anthony Emmert, Executive Director
Steve O'Neill, Legal Counsel
Eva Ibarra, Clerk of the Board

Public Present

Lisa Ballin, CSUS/DBS&A
Bryan Bondy, Fillmore and Piru Pumpers Associations
Christian Braudrick, Stillwater Science
Guy Cole
Dan Detmer, UWCD
Barb Filkins
Matt Freeman
Burt Handy
Debbie Jackson
Rachel Laenen, Fillmore Basin Pumpers Association
Tony Morgan, DBS&A
Patrick O'Connell, DBS&A
Bruce Orr, Stillwater Science
Eddie Pech, DWR
Zachary Plummer, UWCD
Stacie Ann Silva
Steve Slack, CDFW
Dr. Jason Sun, UWCD
Richard Tate
Jean Thirkettle
Roy Thun
James Thurber
Ambry Tibay, UWCD
Jim Van de Water
Gilead Wurman
Steven Zimmer, Five Point

1. Call to Order – First Open Session 5:04 pm

Vice Chair McFadden called the meeting to order at 5:04 pm

1A. Pledge of Allegiance

Vice Chair McFadden lead the group in reciting of the Pledge of Allegiance.

1B. Directors Roll Call

Roll call: (Kimball, Chair Long, Vice Chair McFadden, Meneghin, Pace, Villaseñor); six present.

1C. Public Comments

Vice Chair McFadden asked if there were any public comments; none were offered.

1D. Approval of Agenda

Motion

Motion to approve the agenda, Director Kimball; Second, Director Meneghin.

Roll call vote: six ayes (Kimball, Chair Long, Vice Chair McFadden, Meneghin, Pace, Villaseñor), none opposed; Motion carries 6/0.

2. UPDATES

2A Director Announcements/Board Communications:

Oral Reports from the Board

Fillmore Pumpers Association Stakeholder Director Update

Director Kimball reported that the Pumpers held a Board Meeting on April 13, where they discussed subsidence and surface water depletion SMCs.

Piru Pumpers Association Stakeholder Director Update

Director Pace echoed the same expressed by the Fillmore Pumpers Association.

Environmental Stakeholder Director Update

Director Meneghin mentioned Friends of the Santa Clara River is implementing a Water Talks program on behalf of Ventura County's integrated regional water program. The program is designed to generate an increase in community involvement as well as in planning for water sustainability for the county. The group is encouraging Water Talk program participants to complete a survey on regional water issues by the end of April.

City of Fillmore Member Director Update

Director Villaseñor provided an update on the City's monthly council meeting, reporting that Councilmembers agreed to provide funding in redoing flood plain mapping around the Fillmore area's new housing development, and also offered to help the FPBGSA Board by providing any information that would be helpful. The Councilmembers also discussed the American Rescue funds and potential for infrastructure money coming into the City of Fillmore, including possible funding for municipal wells in an effort to build up or redo infrastructure within those wells.

United Water Conservation District Member Director Update

No update.

County of Ventura Member Director Update

Chair Long mentioned letters from County of Ventura regarding Stillwater Sciences draft Groundwater Dependent Ecosystems technical memo had been sent.

2B Executive Director Update

Information Item

Executive Director Tony Emmert provided an update on grant progress report number seven resubmission after changes were requested by DWR. Staff is now working on invoice and progress report number eight, with the goal of submitting before the end of April. He also mentioned Groundwater Model documentation is ongoing with a target to complete by end of this month, and staff is working on budget development and the monitoring wells project.

2C Legal Counsel Update

Information Item

Steve O'Neill, Legal Counsel for the agency, reported working on the auditor agreement, and an amendment to the bylaws regarding fee waivers that are part of action items in today's meeting. He also mentioned there has been some recent court activity that is helping in providing guidance on interpreting SGMA law. He also mentioned overlying rights in a managed basin and stated he will be providing Mr. Emmert with a report. He is also exploring guidance on interplay with the Groundwater Sustainability Plans and public trust issues related to the endangered species act.

2D GSP Consultant Update

Information Item

Mr. Tony Morgan of DBS&A stated that consultants have submitted a draft request for bid packages for the monitoring well construction activities to Mr. Emmert. The draft request included various documents and he urged agency counsel to review the documents, including the general insurance requirements for well drilling projects.

3. CONSENT CALENDAR

All matters listed under the Consent Calendar are considered routine by the Board and will be enacted by one motion. There will be no separate discussion of these items unless a Board member pulls an item from the Calendar. Pulled items will be discussed and acted on separately by the Board. Members of the public who want to comment on a Consent Calendar item should do so under Public Comments. (ROLL CALL VOTE REQUIRED)

3A Approval of Minutes

The Board approved the Minutes from the Board Meetings of March 18, 2021 and April 1, 2021.

3B Approval of Warrants

The Board approved payment of outstanding vendor invoices:
United Water Conservation District \$28,058.48

3C Monthly Financial Report

The Board received the Agency's monthly profit and loss statement and balance sheet.

Motion to approve consent calendar, Director Pace; Second, Director Villaseñor. Roll call vote: five ayes (Kimball, Vice Chair McFadden, Meneghin, Pace, Villaseñor), none opposed; one absent. Motion carries 5/0. (Chair Long was out of coverage area during the vote.)

4. MOTION ITEMS

4A Resolution 2021-01 Waiver of Late Fees and Interest on Groundwater Charges

Motion

The Board reviewed Resolution 2021-01, amending the Agency Bylaws to authorize the Executive Director to approve waiver of certain late fees and interest charges associated with groundwater pumping fees.

Motion to adopt Resolution 2021-01, Director Meneghin; Second, Director Kimball. Roll call vote: six ayes (Kimball, Chair Long, Vice Chair McFadden, Meneghin, Pace, Villaseñor), none opposed. Motion carries 6/0.

4B California Department of Fish and Wildlife Request for Waiver of Late Fees and Interest

Motion

The Board approved California Department of Fish and Wildlife's request for waiver of late fees and interest in the amount of \$1,687.99 for groundwater pumping associated with its Fillmore Fish Hatchery facility.

Board reviewed California Department of Fish and Wildlife's request for a waiver of late fees and interest regarding its outstanding balance on fees.

Motion to approve waiver, Director Villaseñor; Second, Director Pace. Roll call vote: six ayes (Kimball, Chair Long, Vice Chair McFadden, Meneghin, Pace, Villaseñor), none opposed. Motion carries 6/0.

4C Four Oaks Ranch Request for Waiver of Late Fees and Interest

Motion

Board reviewed Four Oaks Ranch's request for a waiver of late fees and interest regarding its outstanding balance on fees.

Motion to approve waiver, Director Villaseñor; Second, Director Pace. Roll call vote: six ayes (Kimball, Chair Long, Vice Chair McFadden, Meneghin, Pace, Villaseñor), none opposed. Motion carries 6/0.

4D City of Fillmore Request for Waiver of Late Fees and Interest

Motion

Board reviewed the City of Fillmore's request for a waiver of late fees and interest regarding its outstanding balance on fees.

Motion to approve waiver, Director Villaseñor; Second, Director Pace. Roll call vote: six ayes (Kimball, Chair Long, Vice Chair McFadden, Meneghin, Pace, Villaseñor), none opposed. Motion carries 6/0.

4E Rogers, Anderson, Malody & Scott, LLP Audit Amendment 1

Motion

The Board reviewed the amendment number one to the 2019-08-21 agreement for auditing services with Rogers, Anderson, Malody & Scott, LLP for the Fiscal Years 2019-2020 and 2020-2021.

Motion to approve Amendment number one to the 2019-08-21 agreement for auditing services with Rogers, Anderson, Malody & Scott, LLP for the Fiscal Years 2019-2020 and 2020-2021, Director Pace; Second, Director Meneghin. Roll call vote: six ayes (Kimball, Chair Long, Vice Chair McFadden, Meneghin, Pace, Villaseñor); none opposed. Motion carries 6/0.

4F Sustainable Management Criteria (SMC) Development

Motion

The Board received stakeholder input regarding the Agency's Sustainable Management Criteria (SMC) matrix with a focus on finalizing the Land Subsidence criteria and the Streamflow criteria and provide direction to Agency staff and consultant team toward development of the draft Groundwater Sustainability Plans.

Director Meneghin stated white water rafting is a recreational use that must be considered on Piru Creek and Santa Clara River and wondered why the slide states no recreational impact.

Mr. Morgan requested clarification from United Water.

Mr. Emmert provided an explanation of recreational use and mentioned it should be noted in the plan.

Director Meneghin mentioned that property around the Fish Hatchery has been purchased and that it will be used as an access point for the Santa Clara River for nature-based recreation that may impact the Groundwater Dependent Ecosystems and asked if that was being factored into the SMC.

Vice Chair McFadden asked Mr. Morgan about bringing in outside water and some kind of supplemental fee as well as rearranging water by pumping water into critical areas.

Mr. Morgan said the topic did come up a couple of meetings ago, and the need to have multiple wells located near the river, which could then add water from a deeper aquifer. He explained when the river starts to dry and shrink, the GSA could pump water to sustain some areas of surface flow. He added that surface sediments are very porous and have a very high percolation, so flow may or may not stay on the surface in a drought, and therefore it would take a significant amount of money to implement this type of program.

Chair Long asked if the GSA were to purchase water, how would it be equal when charging for the water purchased.

Mr. Morgan answered by saying the GSA could implement a surcharge added to the regular fees, per acre foot, where all pumpers would be charged equally.

Legal Counsel mentioned the agency would need to consider a Proposition 218 analysis, to assess benefit to all payers.

Director Pace said the discussion was moving off target or was premature and went on to share the Pumpers discussions on the resolutions for SMCs for subsidence. He mentioned the pumpers rethought the change they requested for the Minimum Threshold and now were requesting it be changed to a less restrictive one-foot per year. He also mentioned the pumpers need more information in order to make a decision.

Director Kimball suggested a five-year study, it could be used to identify sensitive infrastructure and conduct a survey to help understand what infrastructure might be impacted and how it would be impacted. That information would provide a better understanding of how the limits for subsidence should be set at.

Vice Chair McFadden asked Director Pace and Director Kimball if the idea is that part of the GSP implementation period is used for analysis and gathering information, and would we also determine if there is subsidence and the cause of subsidence, or change of elevation, as there can be more than one cause for these changes.

Director Pace said that with new information available when the study is done, the pumpers can review the information obtained and adjust accordingly.

Director Kimball also stated that once critical infrastructure or locations are identified, then the placement of monitors can be emphasized, but that at present, there is not enough information or historical data.

Director Meneghin requested more details on the study idea from the pumpers.

Director Pace explained the pumpers' ideas for the study on surface water depletion and study MT and MO's we need to address the technical memo, as there are deficiencies in the memo. He added that the memo needs to be updated based on the responses that have been received. He said that would help determine what the key issues are.

Director Meneghin said there are data gaps and asked Legal Counsel if there is a timeline as far as the legal memo he is to write up.

Legal Counsel stated he plans on getting it out within the next two weeks.

Director Meneghin called on Department of Water Resources representative Eddie Pech from the audience, inquiring as to the status of the guidance document, regarding setting criteria for groundwater dependency.

DWR's Eddie Pech replied that the department is moving away from guidance documents on this round of GSPs and he had not heard of any updates or new documents for this round of submittals. He also said not to expect anything from DWR before the plans are due.

Director Kimball noted that most of the comments received focus on aquatic species and mentioned the draft GDE Technical Memo is focused primarily on plant species and not aquatic species. He said there is no clear definition that defines aquatic habitat, which is a weakness that needs to be corrected for the final versions of the Technical Memo and GSP. He also mentioned that the GSA could get help from Stillwater if they would provide backup information for the directors to focus on. He added that Mr. Morgan has identified two rising groundwater reaches as the two aquatic GDE habitats of interest, but he thinks the GSA needs to strengthen the information for better clarification.

Director Meneghin asked Mr. Emmert if the Agency had received a response from Department of Fish and Wildlife regarding the Technical Memo.

Mr. Emmert replied that he would look into it but did not recall receiving any response from them.

Director Meneghin asked if the proposed study updates will be done in five-year intervals or within a year or two, and will it be a supplemental document? She also asked if a matrix would be developed for management prior to the five-year update.

Director Pace said the Board did not get into details, although they agreed it would be done within the five years, if not sooner.

Vice Chair McFadden asked Mr. Morgan what his thoughts were regarding the two remaining SMCs that have yet to be established, and what needs to be done to have a placeholder at this point.

Mr. Morgan replied that he would rather see a placeholder that can be dealt with now and there could be studies done within the five-year period with projects that can be implemented in the five-year update in 2027.

Mr. Morgan asked Mr. Emmert if the metrics that come from National Marine Fisheries Services (NMFS) are there for passage flows? Mr. Emmert confirmed yes, that is correct.

Chair Long asked what the state or federal regulations are for passage flow numbers, and can the GSA use those numbers, or can the GSA use below the thirty feet and set a trigger. Mr. Morgan said NMFS sets the flow requirements for passage and United complies with those numbers and provided explanation of other scenarios.

Vice Chair McFadden asked if United maintains flows at critical times regardless of critical conditions. Mr. Emmert replied yes and provided an explanation with more detail.

Director Meneghin asked Mr. Christian Braudrick from Stillwater Science, if, in his technical opinion, the matrix is sufficient to capture the over summer rearing habitat conditions that is required? Mr. Braudrick replied that as temperatures make it unsuitable, that would be an important metric and mentioned there is no data on fish observations at the basin boundaries.

Director Kimball, Director Meneghin, Vice Chair McFadden, Mr. Emmert, Mr. Detmer and Mr. Morgan had an extensive conversation regarding steelhead fish, water temperature and water flows.

Participant posted question, "Have the majority of the GDEs been eliminated based on 30-foot depth to groundwater?" Mr. Broderick replied no, the GDE's that were mapped where there is data, sometimes the groundwater is shallow enough that it might be at the rooting depth of the plants. Other areas are not areas of rising groundwater, although they do have vegetation.

Participant posted comment, “Remember, there are substantial amounts of invasive vegetative species that are using tremendous amounts of surface water daily which are negatively affecting surface water flows for beneficial users. If invasive species could be eliminated, it would probably have the greatest impact on rising ground water in the GDEs benefitting aquatic species.” Mr. Broderick replied in the Cienega area there is quite a bit of arundo mapped there, but no calculations have been made that we know about and it is known that arundo uses a lot of water, but the amount is not certain and therefore the increase in surface water flow is unknown.

Director Meneghin mentioned that at a previous meeting, a report was shared regarding arundo and posted on the FPBGSA website.

Motion to approve the Land Subsidence criteria with a note to set the minimum threshold for land subsidence at one foot of inelastic subsidence, add additional information in the text about the condition of basins being low and very low risk for subsidence and plan with the data gap analysis to have further studies to identify the susceptible infrastructure, and have an update within the first five years, by Director Pace; Second, Director Villasenor. Roll call vote: six ayes (Kimball, Chair Long, Vice Chair McFadden, Meneghin, Pace, Villaseñor), none opposed. Motion carries 6/0.

Director Pace asked Mr. Morgan to confirm what it means to be sustainable. Mr. Morgan said DWR gives the GSAs the authority to define sustainability and DWR wants the GSAs to avoid significant and unreasonable impacts to beneficial uses and users and make progress towards meeting the Agency’s Measurable Objectives (MO).

Vice Chair McFadden asked Mr. Morgan to please define MO. Mr. Morgan replied that it would be addressed in future desired conditions.

4G Special Board Meeting on Sustainable Management Criteria

Motion

The Board discussed dates for holding a Special Board Meeting for approval of the Sustainable Management Criteria matrix and agreed to May 6, 2021.

Motion to approve a Special Board Meeting to be held on May 6, 2021, at 5pm for the purpose of approving the Sustainable Management Criteria matrix, Director Pace; Second, Director Kimball. Roll call vote: six ayes (Kimball, Chair Long, Vice Chair McFadden, Meneghin, Pace, Villaseñor), none opposed. Motion carries 6/0.

FUTURE TOPICS FOR BOARD

Groundwater depletion, SMC’s

DISCUSSION ADJOURNMENT: 8:04 pm

Chair Long adjourned the meeting at 8:00 p.m. to the next **Regular Board Meeting** Thursday, **May 20, 2021** or call of the Chair.

I certify that the above is a true and correct copy of the minutes of the Fillmore and Piru Basins Groundwater Sustainability Agency's Board of Directors meeting of April 15, 2021.

ATTEST: _____
Kelly Long, Chair, FPB GSA Board of Directors

ATTEST: _____
Eva Ibarra, Clerk of the Board

FPBGSA Board Meeting - 15 April 21
Item 4F - Draft Sustainable Management Criteria

- SMC Matrix
- Stakeholder Discussion / Input on Draft SMC



SMC	Undesirable Results	Metric	MT	MO	Summary	Comments
GW Elevation	Loss of ability to pump GW	GW elevation	WL declines below the base of well screens in more than 25% of representative wells	GW levels at 2011 high WL		maximizes range between MT and MO
GW Storage Reduction	inadequate GW storage to last through multi-year drought without GW extraction limitations	GW elevation	*WL declines below the base of well screens in more than 25% of representative wells	GW levels at 2011 high WL		maximizes range between MT and MO
SW Depletion	Surface water flow declines due to GSP implementation that interfere with the beneficial use and users	Rising GW rates at the Fillmore-Piru basin boundary (Fish Hatchery) / Depth to GW at the Fillmore-Piru basin boundary	The GSP does not propose projects or management actions that would change the operational regime of the basins. Therefore, implementation of the GSP does not cause significant and unreasonable effects. No beneficial users or uses are materially impacted by implementation of the GSP.			
Land Subsidence	Land subsidence amounts that interfere with infrastructure operations	*Subsidence rates / quantity	*Total inelastic subsidence of 1.2 in/yr (0.1 ft/yr) or 0.6 ft over 5 yrs	Inelastic subsidence rates within +/- 0.05 ft/yr as determined by InSAR		Monitor subsidence amount - InSAR data from DWR; trigger at GW elevation lower than the estimated historical low
Degraded WQ	Water quality degradation that impairs the beneficial use of the resource	WQ values	Water quality parameters established in existing or future regulations	FPBGSA is not a water purveyor and lacks regulatory authority for WQ compliance, but will cooperate with appropriately empowered entities		
Seawater Intrusion	NA	NA	NA	NA		

Surface Water - Groundwater Interaction



- Surface water depletion due to GW extractions on rising GW at basin boundaries
- Impacts of changes in rising GW quantities/rates on **beneficial uses and users**
 - No known surface water diversions for use as DOM, MUNI, IRRIG supplies
 - No REC uses
 - **GDEs exist in area of rising GW**



Surface Water - Groundwater Interaction



- If there are no beneficial DOM, MUNI, IRRIG, or REC uses or users, then MTs cannot be defined to avoid impacts to those uses or users
- GDEs are uses/users of the rising GW
- Generalized, relative sensitivities to rising GW availability:
 - Fish / Amphibians / Birds / Vegetation



Generalized Impacts of Surface Water Depletion on GDEs

Fish - can be stranded if SW flow declines / die off if stranded by lack of SW and **rising GW are not available** / not mobile - cannot move to another location

Amphibians - can be stranded if SW flow declines / possible die off if SW and **rising GW are not available** / somewhat mobile - some likely can move to another location

Birds - possible die off if SW or **rising GW are not available** / mobile - can move to another location

Vegetation - unlikely die off if SW is not available, but rising GW is present within Critical WL depth / die off possible if **shallow GW within Critical WL depth not available** / not mobile - cannot move to another location

Generalized Impacts of Surface Water Depletion on GDEs

Fish - passage

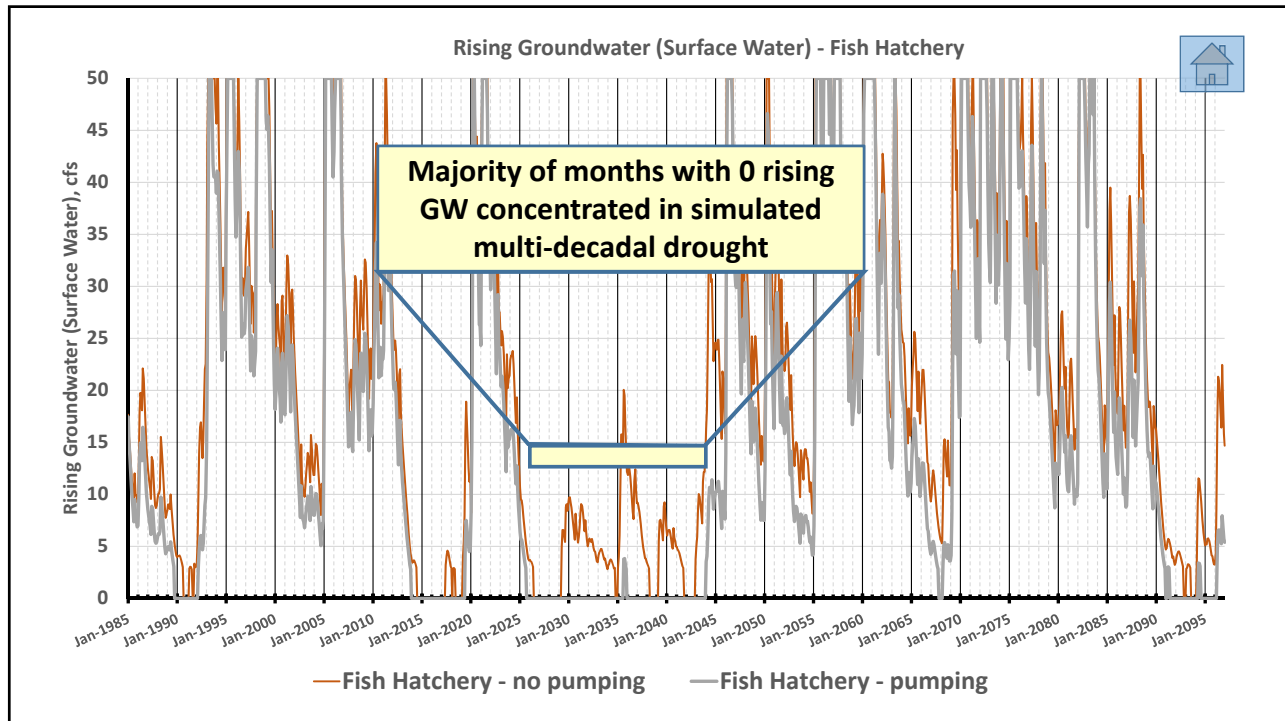
- passage flows provided by natural runoff or artificial water releases from Lake Piru
- during passage periods, rising GW (or lack thereof) has no substantial impact - flows provided by natural runoff and/or artificial water releases

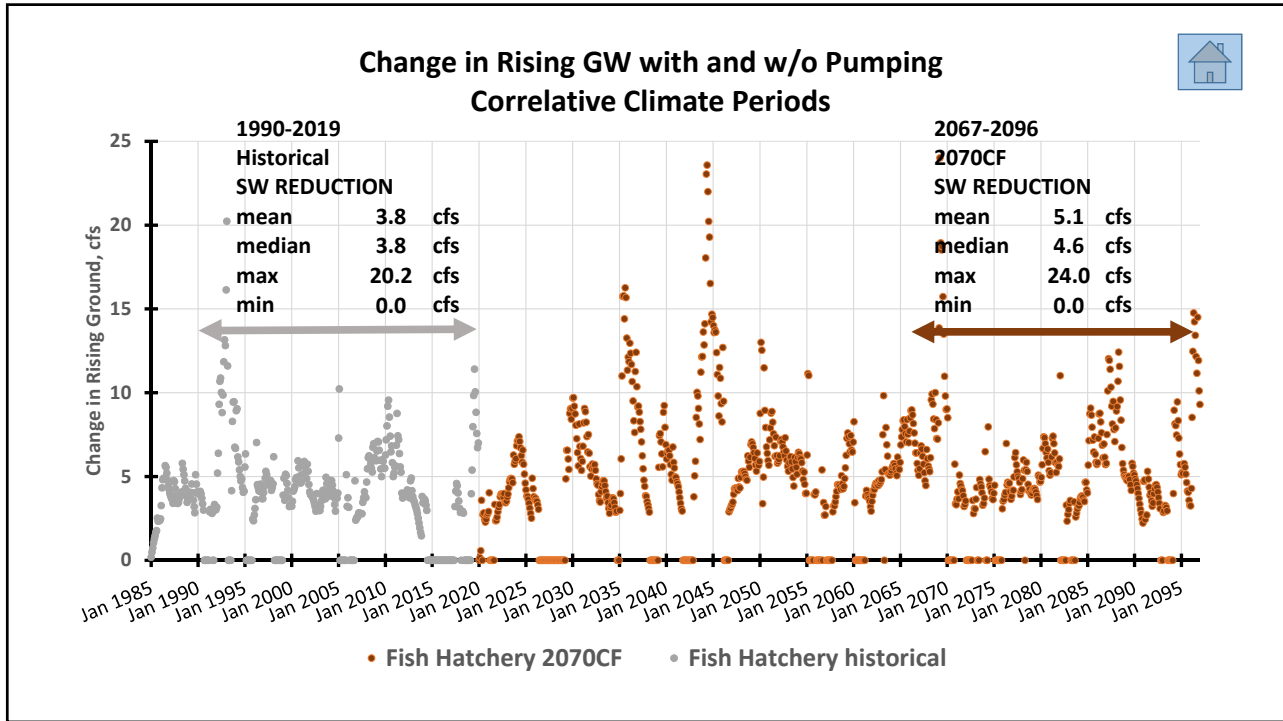
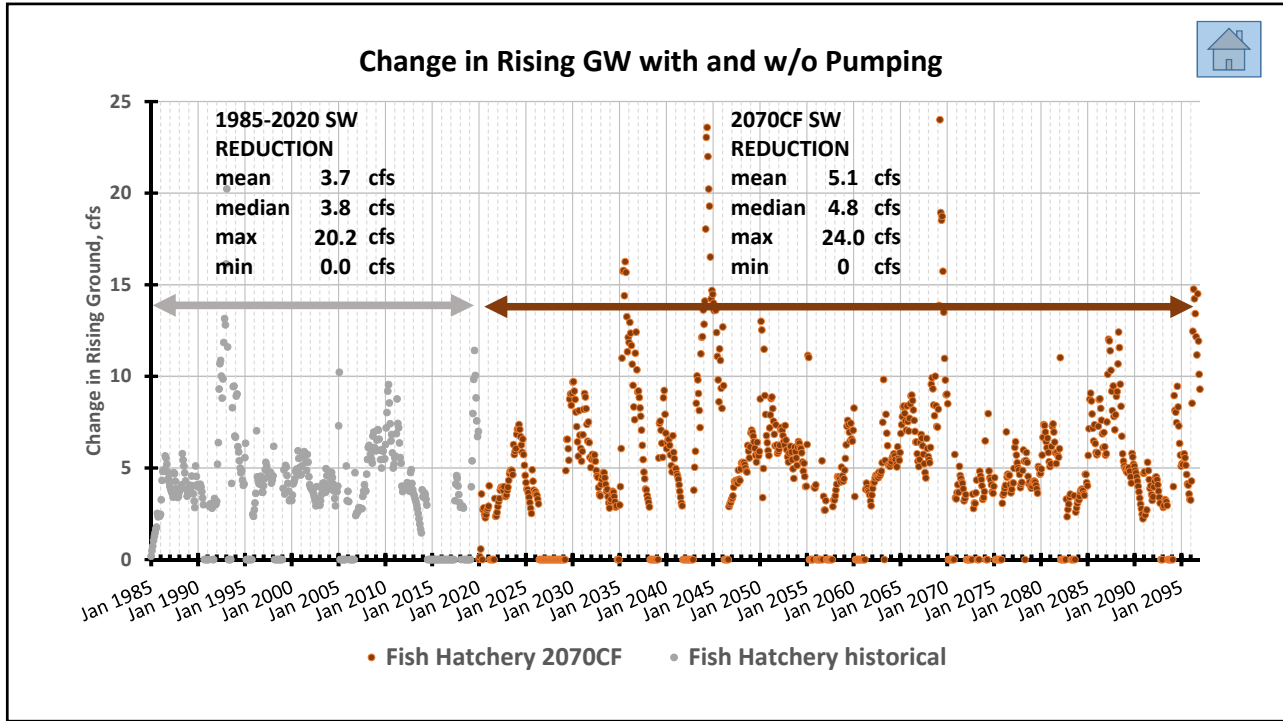
Generalized Impacts of Surface Water Depletion on GDEs

Fish / Amphibians / Bird - stranding

- termination of artificial releases is gradual to minimize chance of stranding
- termination of storm runoff is dictated by natural processes
- isolation of the GDE areas is normal - losing stream reaches upstream and downstream
- GW pumping in non-drought periods does not eliminate rising GW
- GW pumping during drought periods does impact rising GW amounts

So how extensive is the impact?





What did we learn re: stranding? Fish / Amphibians / Birds

- ✓ Select stream reaches are naturally subject to isolation (i.e., losing reaches upstream and downstream)
- ✓ Surface water flows are not naturally maintained along all stream reaches
- ✓ A primary water source for GDE areas near the basin boundaries is rising GW
- ✓ Droughts are a primary driver for rising GW reductions

What did we learn re: stranding? Fish / Amphibians / Birds

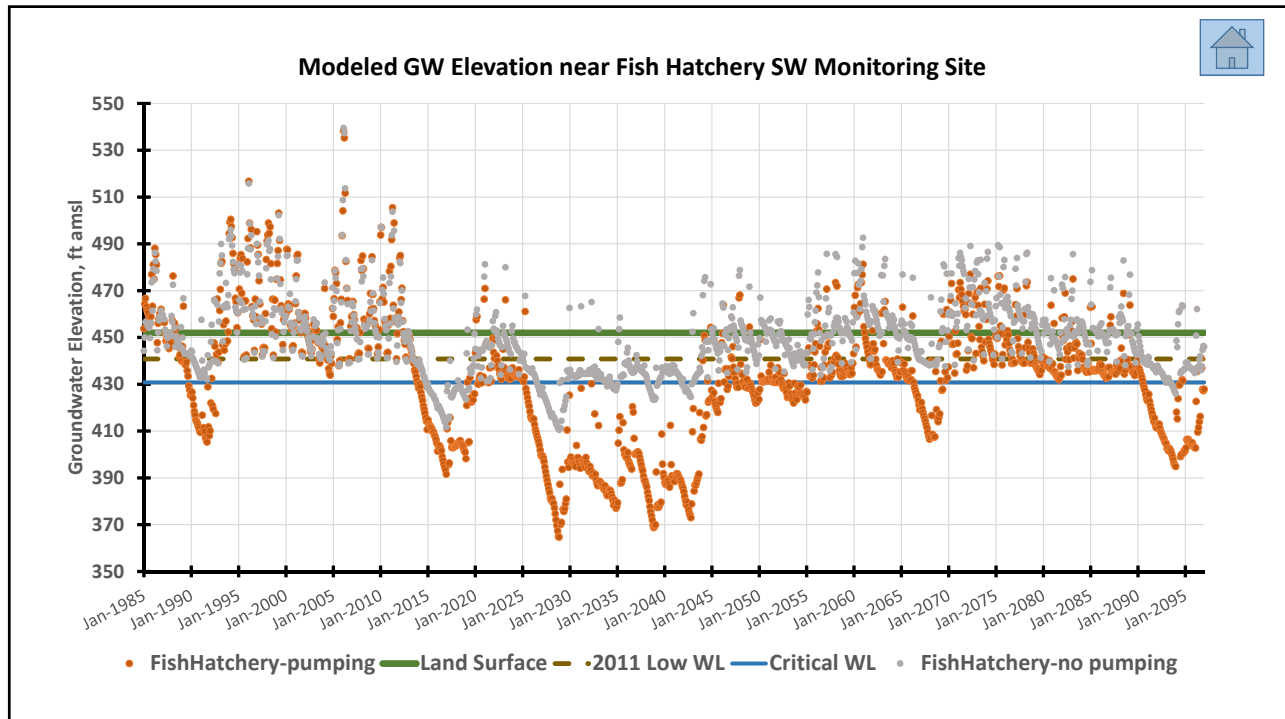
- ✓ Future climate change impacts rising GW rates, although the average change is only about 1.3 cfs
- ✓ Rising GW rates are totally depleted (zero) during severe droughts even when GW extractions are dramatically reduced (~50%)
- ✓ GW extractions:
 - ✓ Do not eliminate rising GW during normal or wet periods
 - ✓ Do reduce rising GW rates during severe drought periods

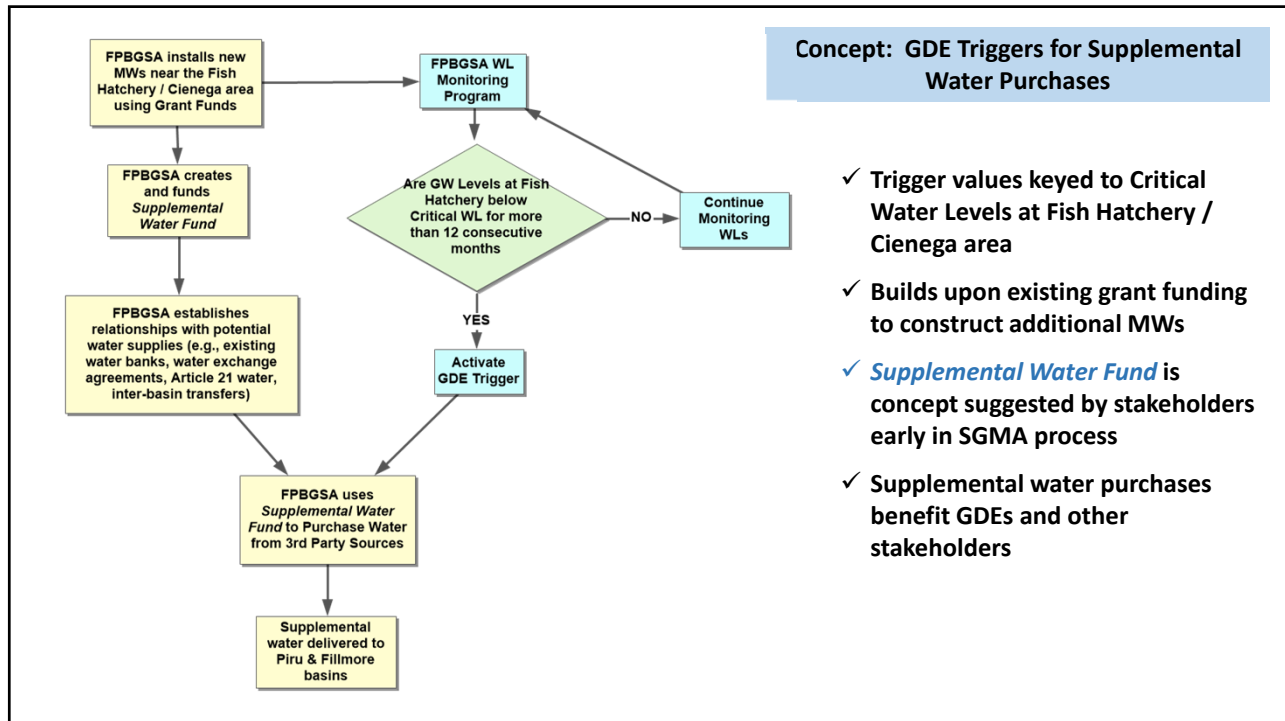
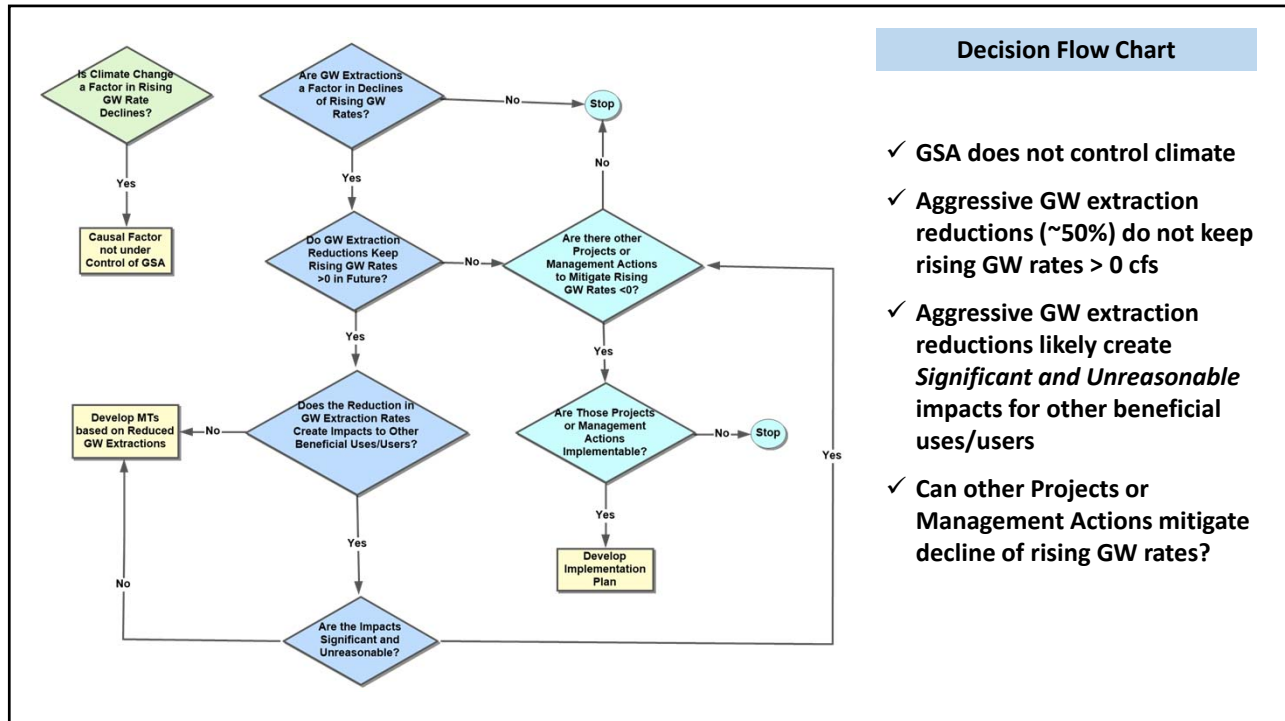
Generalized Impacts of Rising GW Depletion on GDEs

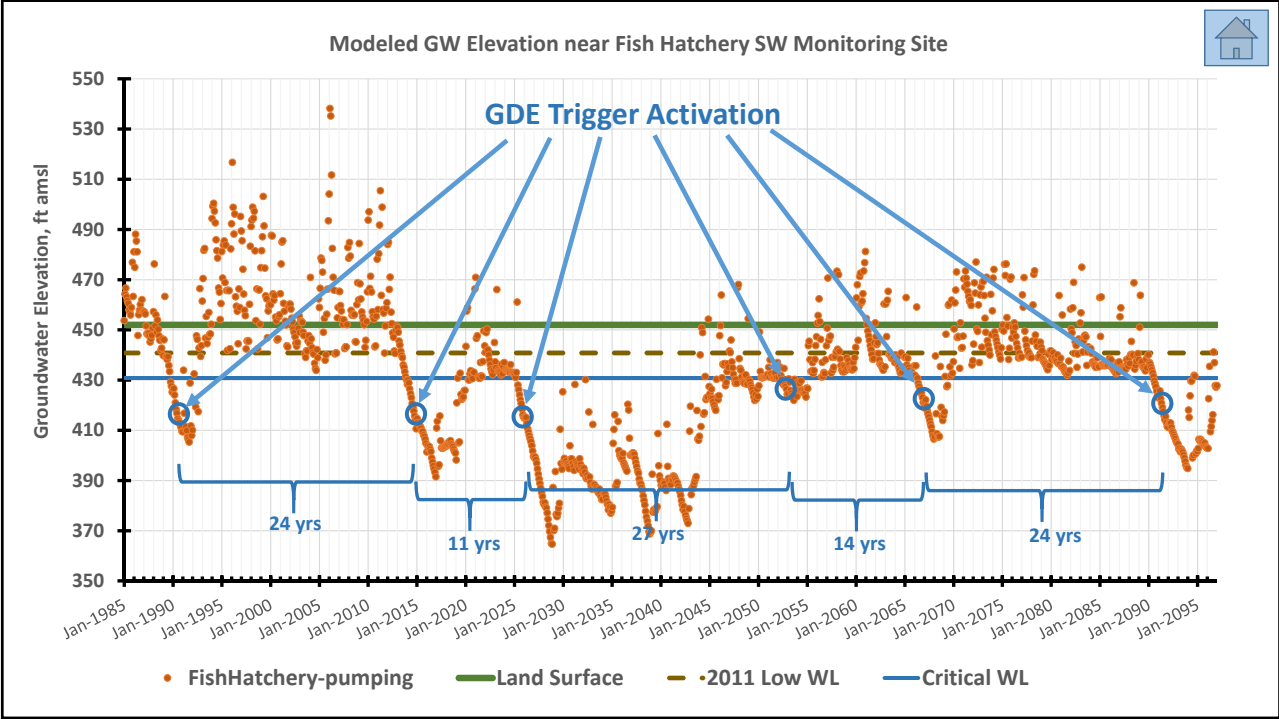
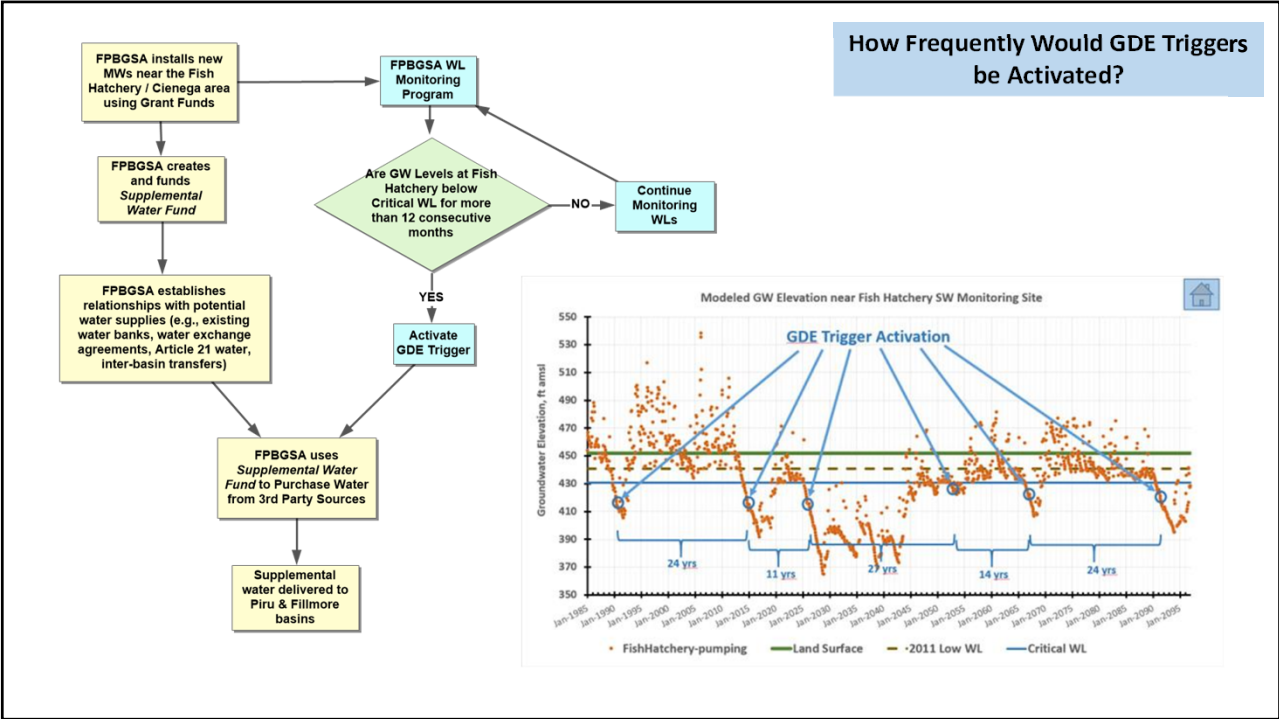
Vegetation - shallow GW within Critical WL depth

- shallow GW conditions are not materially different under future climate conditions than historical period
- GW pumping in non-drought periods does not result in GW levels < Critical WL
- GW pumping during drought periods does result in GW levels < Critical WL

So how extensive is the impact?

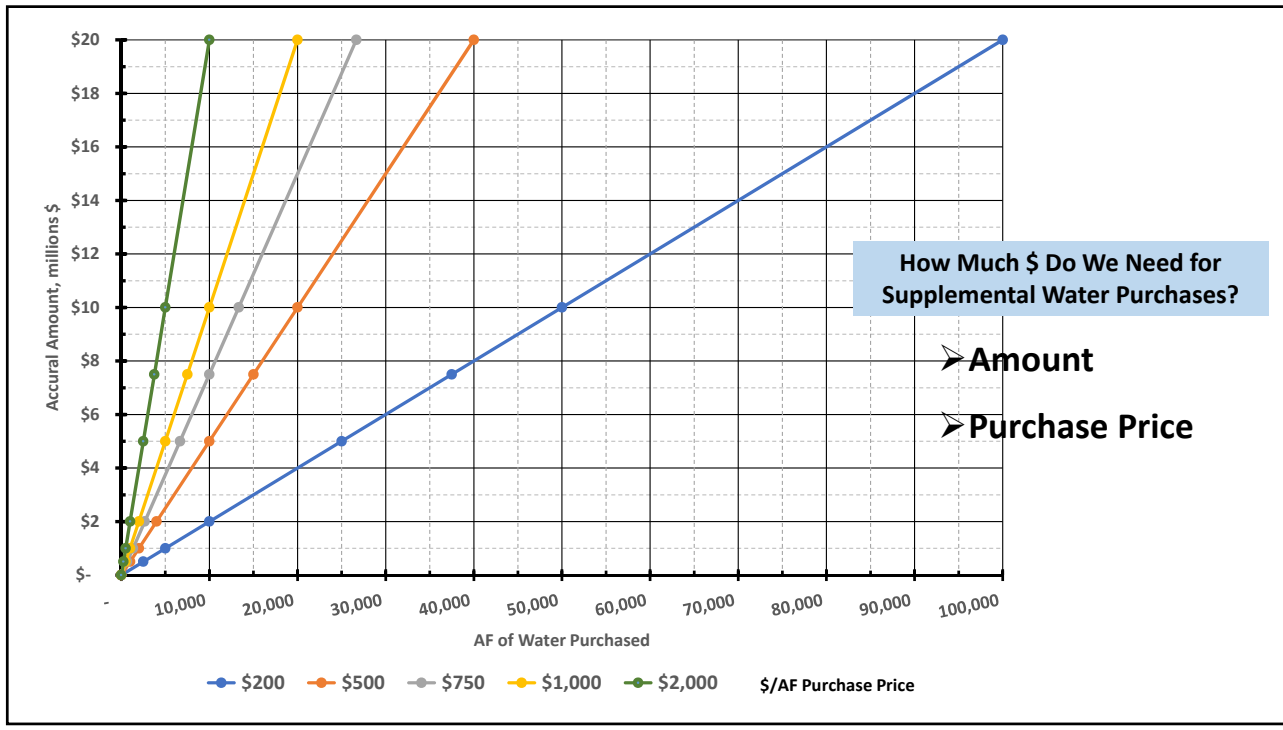
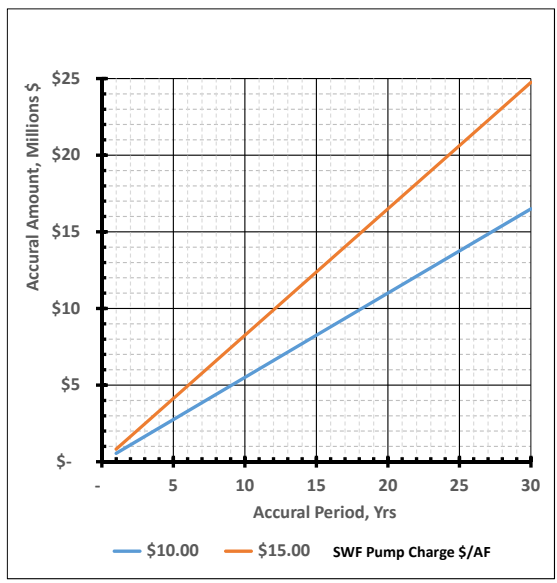






How Much \$ Can We Accrue for Supplemental Water Purchases?

	units	Amt	Amt
<i>Supplemental Water Fund</i>			
Pump Charge	\$/AF	\$ 10.00	\$ 15.00
Average GW Extractions (total for F+P basins)	AF/Yr	55,000	55,000
Supplemental Water Fund Accrual Rate	\$/Yr	\$ 550,000	\$ 825,000
Accrual Period	Yrs	11	11
Accrual Amount		\$ 6,050,000	\$ 9,075,000
Accrual Period	Yrs	14	14
Accrual Amount		\$ 7,700,000	\$ 11,550,000
Accrual Period	Yrs	24	24
Accrual Amount		\$13,200,000	\$ 19,800,000
Accrual Period	Yrs	27	27
Accrual Amount		\$14,850,000	\$ 22,275,000



Subsidence
Groundwater Decline
Surface Water Depletion
Sea Water Intrusion
Groundwater Storage Decline
Groundwater Decline
Surface Water Depletion
Sea Water Intrusion
Groundwater Decline

Questions





Special Board of Director Meeting
Thursday, May 6, 2021
Via Zoom

MINUTES

Directors Present

Director Kelly Long, Chair
Director Ed McFadden, Vice Chair/Secretary
Director Gordon Kimball
Director Candice Meneghin
Director Glen Pace
Director Christina Villaseñor

Staff Present

Anthony Emmert, Executive Director
Steve O'Neill, Legal Counsel
Eva Ibarra, Clerk of the Board

Public Present

Lisa Ballin, CSUS/DBS&A
Bryan Bondy, Fillmore and Piru Pumpers Associations
Christian Braudrick, Stillwater Science
Frank Brommenschenkel
Katie Brokaw
Dan Detmer, UWCD
Eric Elliott, UWCD
Matt Freeman
Burt Handy
Zachary Hanson, UWCD
Logan Hardison
Sander Hendrick
Debbie Jackson
Rachel Laenen, Fillmore Basin Pumpers Association
Ari Larsen
Tony Morgan, DBS&A
Patrick O'Connell
Eddie Pech, DWR
Zachary Plummer, UWCD
EJ Remson, TNC
Kat Selm, The Nature Conservancy
Steve Slack, CDFW
Dr. Jason Sun, UWCD
Richard Tate
James Thurber

Gilead Wurman
Steven Zimmer

1. Call to Order – First Open Session 5:03 pm

Chair Long called the meeting to order at 5:03 pm.

1A. Pledge of Allegiance

Director Villaseñor led the meeting participants in reciting the Pledge of Allegiance.

1B. Directors Roll Call

Roll call: (Kimball, Chair Long, Vice Chair McFadden, Meneghin, Pace, Villaseñor); six present.

1C. Public Comments

Chair Long asked if there were any public comments; Kat Selm from The Nature Conservancy read out loud the comment letter submitted earlier in the day, which was posted on the FPBGSA website and shared with all Directors.

1D. Approval of Agenda

Motion

Motion to approve the agenda, Vice Chair McFadden; Second Director Pace. Roll call vote: six ayes (Kimball, Chair Long, Vice Chair McFadden, Meneghin, Pace, Villaseñor); none opposed. Motion carries 6/0.

2. UPDATES

2A. Legal Counsel Update Information Item

Legal Counsel provided an informational update on Agency's legal issues and concerns and stated, "SGMA says we are required to make informed decisions when setting SMCs and he feels this board is well informed."

Chair Long asked if the letter sent by Mr. O'Neill would be posted on the website. Mr. O'Neill stated he would send out a letter that can be shared with the public and posted on the website.

3. MOTION ITEMS

3A. Sustainable Management Criteria (SMC) Development

Motion

The Board considered the adoption of the Agency's Sustainable Management Criteria (SMC) matrix and associated management actions and provided direction to Agency staff and consultant team toward development of the draft Groundwater Sustainability Plans.

Chair Long requested Directors share their Stakeholders input previously requested from Directors at last meeting.

Chair Long, Vice Chair McFadden, Executive Director Tony Emmert, Directors Kimball, Meneghin, Pace and Villasenor, all shared their Stakeholders thoughts and ideas.

Director Meneghin asked Mrs. Selm why the mention of the 12-foot minimum for GDE depth to water, where does that number come from.

Mrs. Selm replied that based on preliminary data from students at UCSB, which was included in a presentation to the FPBGSA from Christopher Kibler some time ago, the data shows that 12-foot minimum depth to water is the threshold where the riparian habitat has die off.

Mr. Bryan Bondy provided his input on the basins SMCs, and where he sees deficiencies, with the mention of data gaps.

Participant posted comment, "what is potential and actual habitat?" Director Meneghin, Director Kimball and Mr. Morgan discussed their views.

Participant posted comment, "can Tony Morgan recap the date at which we are required to measure the undesirable effects by SGMA and is it January 2015?" Mr. Morgan referred to a slide in his presentation and explained the time frame and said you do not have to go beyond January 2015, but you can if you want to.

Participant posted comment, "where did the critical water level of twenty feet come from?" Mr. Morgan replied it came from the study from Christopher Kibler's presentation from the 2011 value.

Participant posted question, "can you explain a trigger process?" Mr. Morgan said he did not find any mention of triggers in SGMA, but they can be used to allow you to say you are going to do specific mitigation actions as part of your process.

Participant posted question, "and the GDE's come back on their own after the drought is over, right?" Mr. Morgan said yes, they come back on their own and asked Christian Braudrick to weigh in on the explanation.

Participant posted question, "If we have not yet determined if there are significant and unreasonable effects related to pumping, why would we adopt mitigation actions?" Mr.

Morgan replied that staff and consultants are offering ideas, but not adopting any mitigation actions.

The Nature Conservancy's EJ Remson suggested there be a management action in the plan that says that after a big die off, the agency will help ensure the non-native invasive plants that come in so quickly are removed until the water levels recover and can support native riparian habitats by keeping the arundo out, which would reduce the evapotranspiration (ET) level and would be beneficial for the pumpers.

Chair Long asked how our GSA would go about removing arundo and would this be built into our GSA? Mr. Morgan said Arundo removal could be added as a potential project in the plan and showed a slide that supported that idea.

Director Kimball asked if tamarisk and arundo are here forever, or can it be removed permanently, as it is extensive throughout the Santa Clara River. Director Meneghin replied that there is a collective of stakeholders that are trying to develop a strategy for arundo removal and mentioned it will be a heavy lift as it is so extensive now, but after several rounds, you can get to a maintenance phase and you can also add an adaptive management plan.

Participant posted question, "Could the dams be used to replenish the surface water?" Mr. Emmert said the area has had three inches of rain and this is the water that can be used, without rain (in drought years) we have no water available to use, and this is why we would have to purchase water from an outside source.

Chair Long asked, for example, we are to feed water to a specific area for four months, where would we get that water, and if you purchase water, you cannot pick the time when you receive it, or how long it stays. Mr. Emmert explained the process of receiving water from other sources and what options are sometimes available.

Vice Chair McFadden asked if you have to take delivery of State Water when available, or can you bank it somewhere? Mr. Emmert explained what options are available, and that there are limitations on the delivery at our end.

Participant posted question, "we haven't identified undesirable results caused by pumping so why are we talking about mitigation actions?" Mr. Morgan said they are only proposed for talking points for the Board to consider and explained the scenarios of why they might use them.

Participant posted question, "but is it required by SGMA to have proposed mitigation actions, for as yet unidentified undesirable results?" Mr. Morgan said no, it is not required by SGMA.

Vice Chair McFadden asked Mr. Morgan if there is a process that would help us make the deadline, as he does not see us coming to a consensus tonight. Mr. Morgan provided a sample of what he feels is a way to possibly get there.

Chair Long asked if we could just use the wording, “if we go into drought”, instead of a specific number, would that work. Mr. Morgan said there needs to be a set measurement for the MT, if you go beyond that level.

Mr. Morgan asked Director Pace what are the data gaps he is seeing.

Director Pace explained the various areas he is seeing lack of information and stated he is more confused now.

Mr. Bryan Bondy commented that he keeps going back to the SGMA regulations that asks GSA to identify affects and beneficial uses and noted there is nothing specific regarding aquatic species. He said we do not know if we have undesirable results related to surface water flows, and premature to decide if we need mitigation actions without knowing what is going on in the rising groundwater areas with aquatic species and is pumping having an effect. If the data is available to answer these questions, then he feels the GSA can proceed, if not, then the GSA has a data gap that needs to be addressed.

Mr. Morgan stated we have part of that information and requested help from Stillwater’s Christopher Braudrick to make clarification. Mr. Braudrick said it is not that we have an entire data gap about the beneficial users, but there are parts of data that we do not have, because there is no data on fish. He stated there are some things they know more about and some things they know less about.

Vice Chair McFadden asked Mr. Bondy how the Upper Ventura River is moving forward with the GSP, with the data gaps as far as getting a plan in front of DWR. Mr. Bondy said they will have to explain to DWR all the aspects of their plan that are unknown at this time, which will require monitoring to set the correct settings by the five year update.

Motion to direct DBS&A to come back to the Board with SMC without the MTs and MOs, and to outline the process at the next meeting, Vice Chair McFadden; Second Director Pace. Roll call vote: six ayes (Kimball, Chair Long, Vice Chair McFadden, Meneghin, Pace, Villaseñor); none opposed. Motion carries 6/0.

4. INFORMATION ITEMS

4A. Monitoring Wells Status Report Informational Item

The Board received a report from staff regarding the status of the Agency’s Monitoring Wells Project, including where new wells are proposed to fill data gaps and where existing wells can be modified for monitoring.

Chair Long asked if there is a need to go out for more grants to cover costs. Mr. Emmert replied by stating we intend to stay within budget of the grant, although we do have a cash flow problem and explained the issues related to that problem.

ADJOURNED: 7:52pm

Chair Long adjourned at 7:52 p.m. to the next **Regular Board Meeting** on **Thursday, May 20, 2021** or call of the Chair.

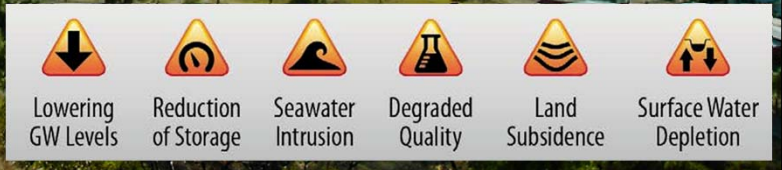
I certify that the above is a true and correct copy of the minutes of the Fillmore and Piru Basins Groundwater Sustainability Agency’s Board of Directors meeting of **May 6, 2021**.

ATTEST: _____
Kelly Long, Chair, FPB GSA Board of Directors

ATTEST: _____
Eva Ibarra, Clerk of the Board

FPBGSA Special Board Meeting - 06 May 21
 Item 3A - Draft Sustainable Management Criteria

- SMC Matrix
- Stakeholder Discussion / Input on Draft SMC



SMC	Undesirable Results	Metric	MT	MO	Summary	Comments
GW Elevation	Loss of ability to pump GW	GW elevation	WL declines below the base of well screens in more than 25% of representative wells	GW levels at 2011 high WL		maximizes range between MT and MO
GW Storage Reduction	inadequate GW storage to last through multi-year drought without GW extraction limitations	GW elevation	WL declines below the base of well screens in more than 25% of representative wells	GW levels at 2011 high WL		maximizes range between MT and MO
SW Depletion	Surface water flow declines due to GSP implementation that interfere with the beneficial use and users	Rising GW rates at the Fillmore-Piru basin boundary (Fish Hatchery) / Depth to GW at the Fillmore - Piru basin boundary	No DOM, MUNI, IRRIG or REC beneficial users or uses of surface water are materially impacted by implementation of the GSP. GDEs addressed through trigger program.	GW levels at 2011 high WL		The GSP does not propose projects or management actions that would change the operational regime of the basins. Therefore, implementation of the GSP does not cause significant and unreasonable effects.
Land Subsidence	Land subsidence amounts that interfere with infrastructure operations	Subsidence rates	Total inelastic subsidence of 1ft/yr or 1ft over 5 yrs	Inelastic subsidence rates within +/- 0.05 ft/yr as determined by InSAR		Monitor subsidence amount - InSAR data from DWR; study to identify susceptible infrastructure (e.g., long-span bridges, gravity sewage systems) for 5 yr GSP update
Degraded WQ	Water quality degradation that impairs the beneficial use of the resource	WQ values	Water quality parameters established in existing or future regulations	FPBGSA is not a water purveyor and lacks regulatory authority for WQ compliance, but will cooperate with appropriately empowered entities		
Seawater Intrusion	NA	NA	NA	NA		

Guiding Thoughts...



- ✓ GW extractions:
 - ✓ Do not eliminate rising GW during normal or wet periods
 - ✓ Do reduce/eliminate rising GW rates during severe drought periods
- ✓ Select stream reaches are naturally subject to isolation (i.e., losing reaches upstream and downstream)
- ✓ Surface water flows are not naturally maintained along all SCR stream reaches
- ✓ A primary water source for GDE areas near the basin boundaries is rising GW
- ✓ Droughts are a primary driver for rising GW reductions

Guiding Thoughts...



✓ **Del Valle area**

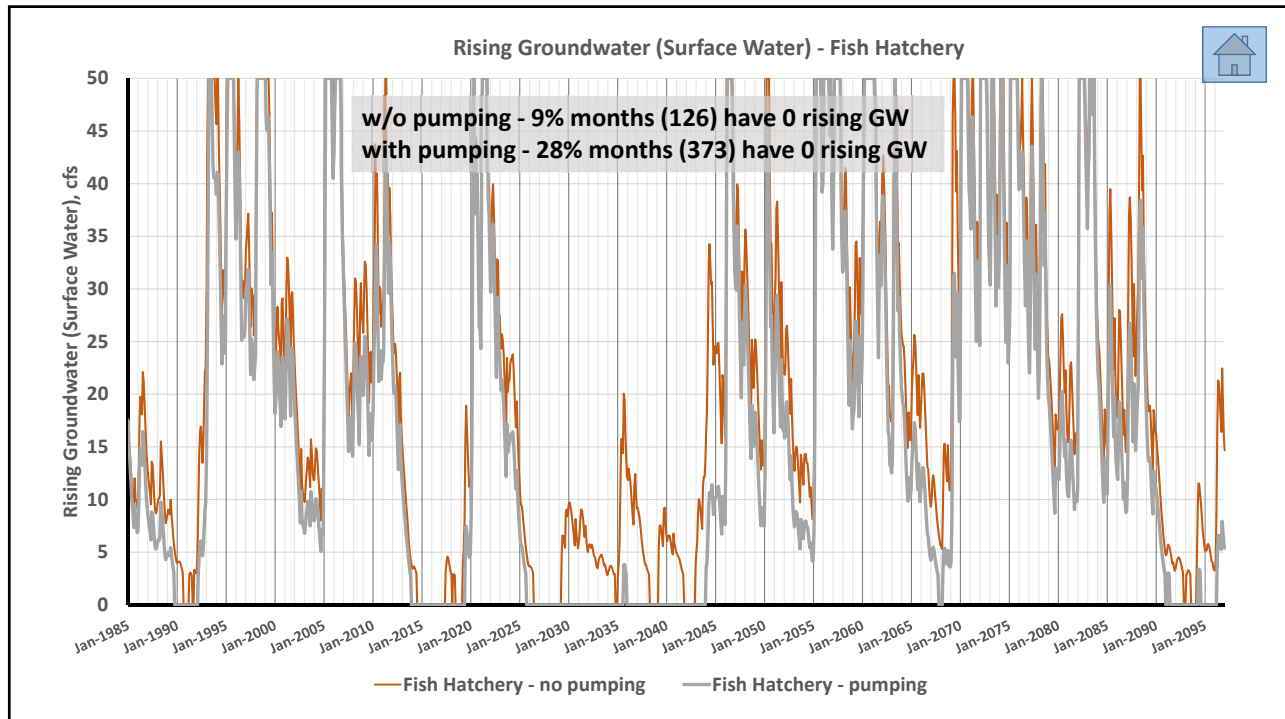
- Shallow depth to water
- SW supported by effluent from upstream WWTPs
- Limited GW extractions in this area
- Management actions deemed not necessary

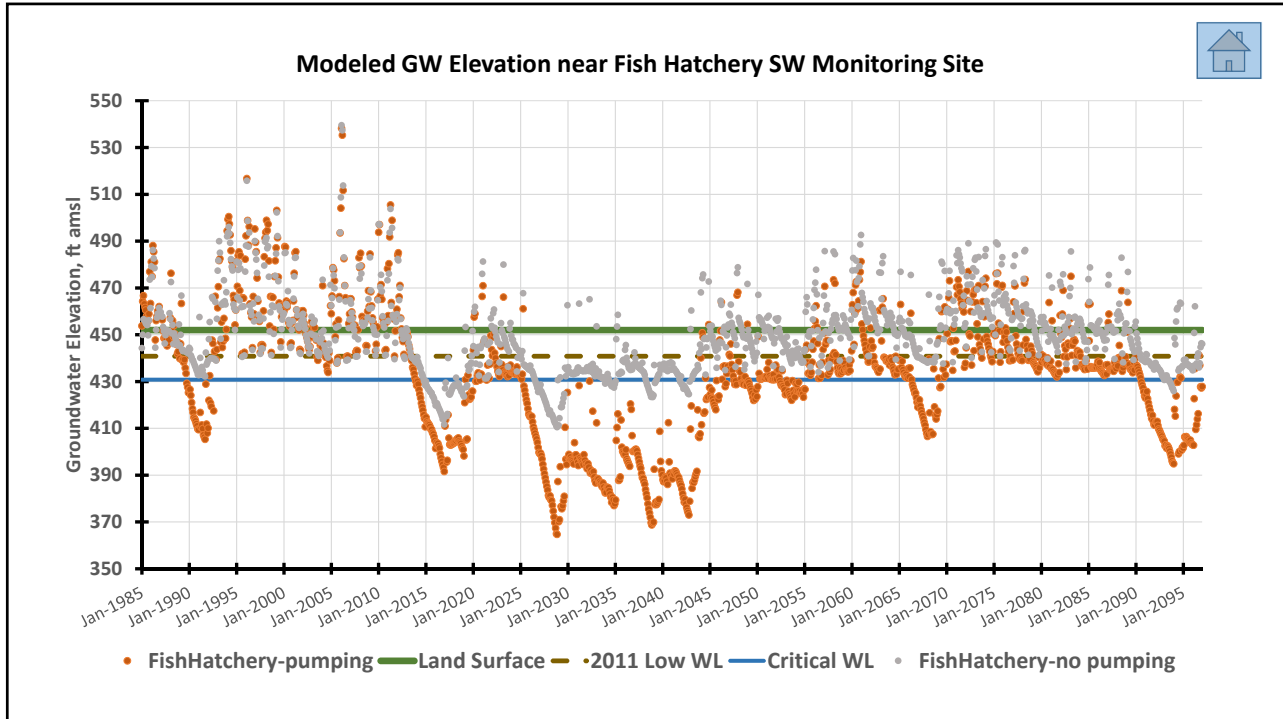
Guiding Thoughts...



Cienega / Fish Hatchery area

- ✓ Rising GW is primary source of SW flows and shallow groundwater
- ✓ Future climate change impacts rising GW rates, although the average change is only about 1.3 cfs
- ✓ Rising GW rates are totally depleted (zero) during severe droughts *even when GW extractions are dramatically reduced (~50%)*
- ✓ Maintaining rising GW during severe droughts *will require GW extractions to be reduced greater than 50%*. Massive reductions will impact agriculture, cities (Fillmore, Piru), domestic wells, and disadvantaged communities

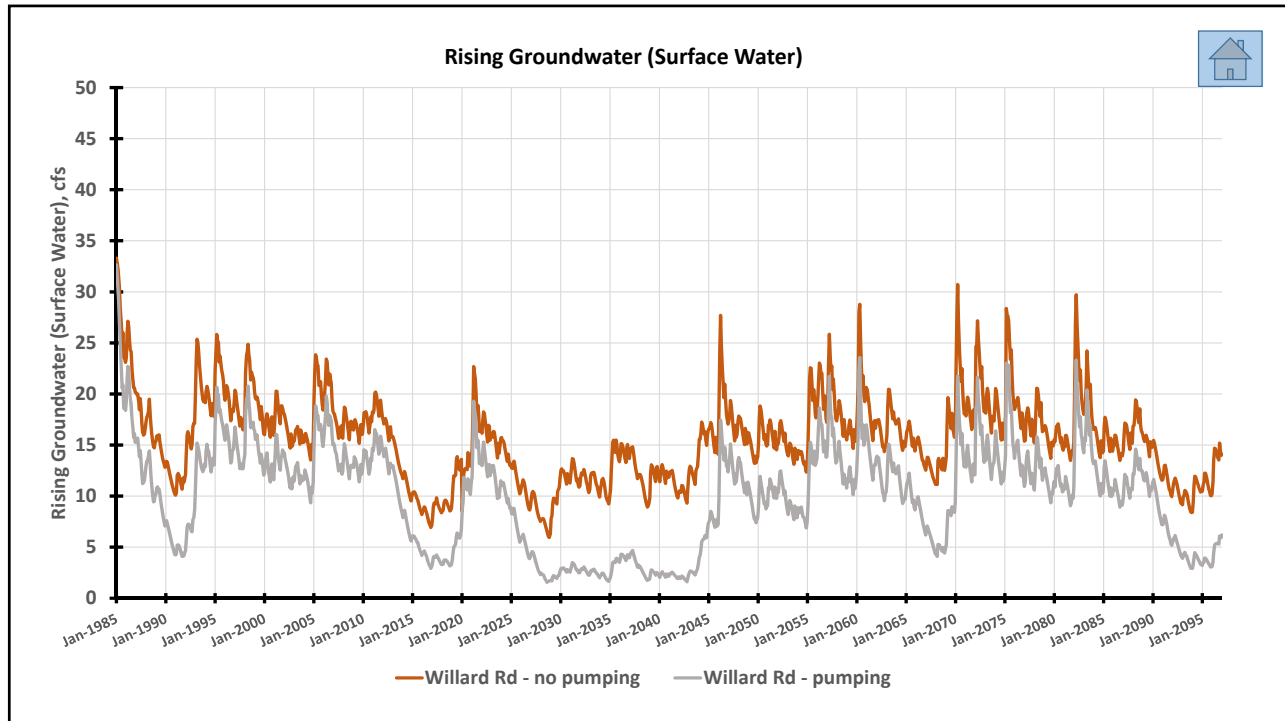




Guiding Thoughts...

✓ East Valley / Willard Road area

- SW (rising GW) not totally depleted during severe droughts
- Rising GW rates are decreased during droughts
- Refuge area for GDEs during severe droughts



Summary...



- ✓ **Del Valle** - no management actions
- ✓ **Cienega / Fish Hatchery** - cannot prevent dewatering of shallow GW or material reductions in rising GW (even with extreme pumping reductions) in severe droughts / consider mitigative actions at this location?
- ✓ **East Valley / Willard Road** - rising GW reduced by GW pumping but not eliminated / bolster this area as refuge for GDEs in severe droughts?

Possible Mitigative Actions...



✓ Cienega / Fish Hatchery -

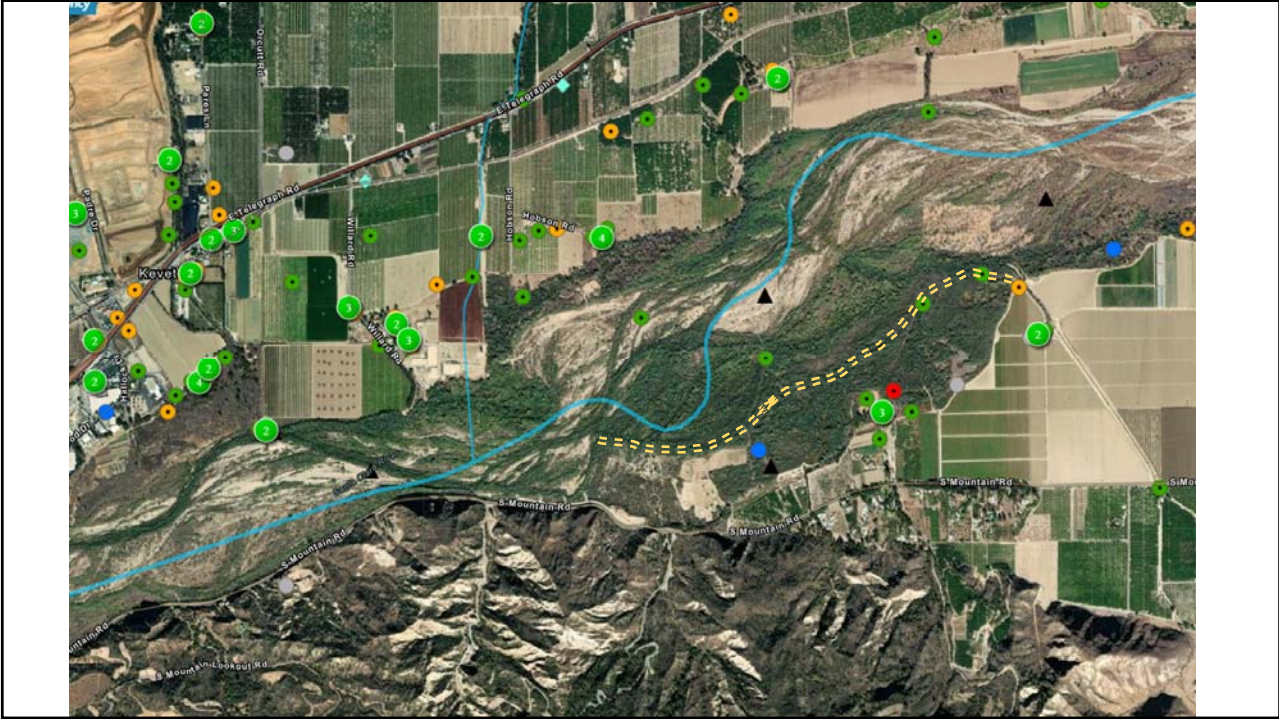
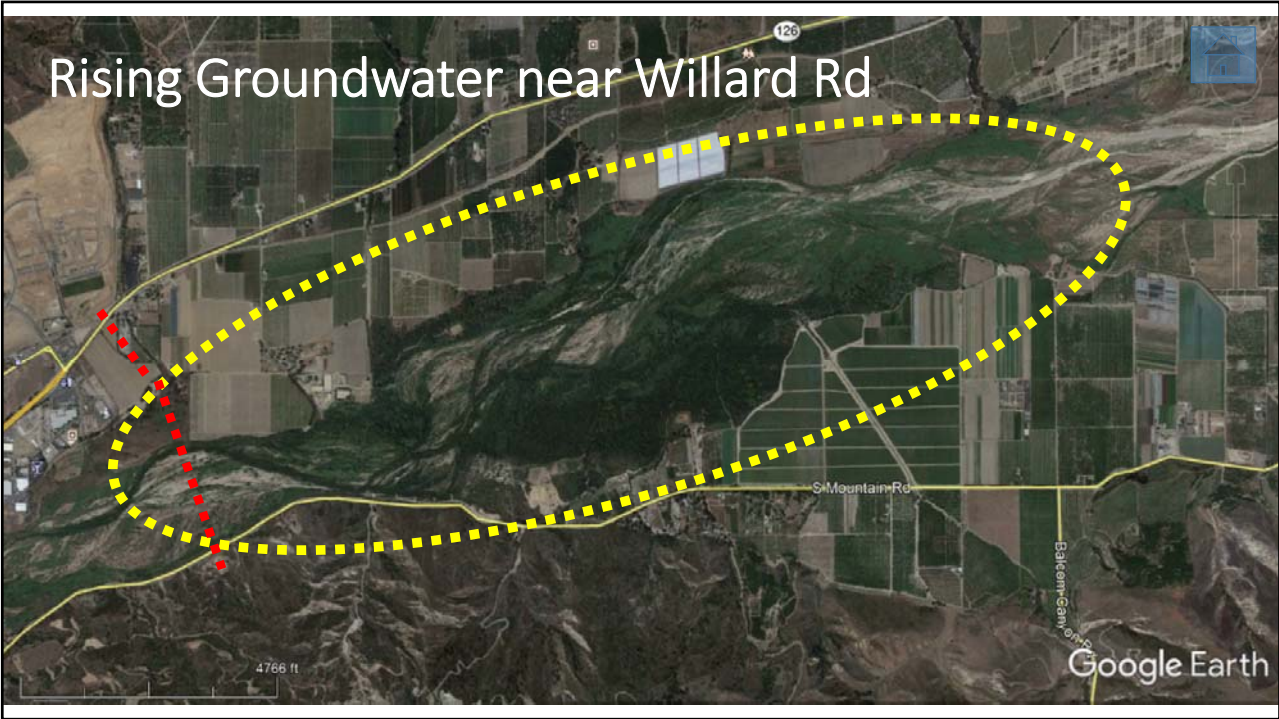
- Support the Cienega project
 - Financial support
 - Construction costs
 - Grant support or assistance
 - Matching funds
 - Other support
 - Letters of support for grant applications
- Support other related projects
 - Arundo removal
 - Purchase supplemental water

Possible Mitigative Actions...



✓ East Valley / Willard Road -

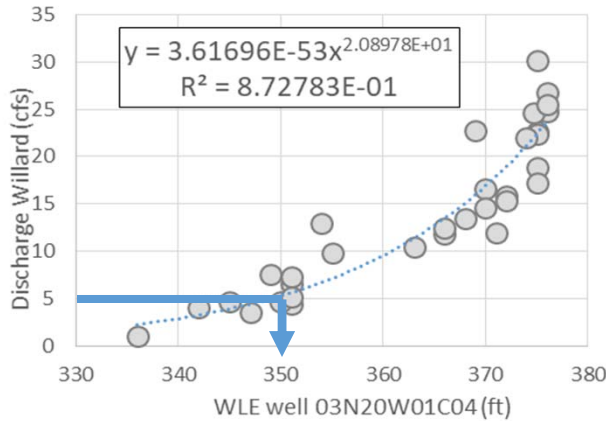
- Support the “Lost Creek refuge area”
 - Monitor SW depths
 - Background data - 6X or 4X/yr
 - Measure SW depths at 3-4 defined locations
 - If SW depths less than 50% of norm - add water until norm re-established or *trigger* no longer applicable



Water Level - Stream Flow Cross Over Analyses

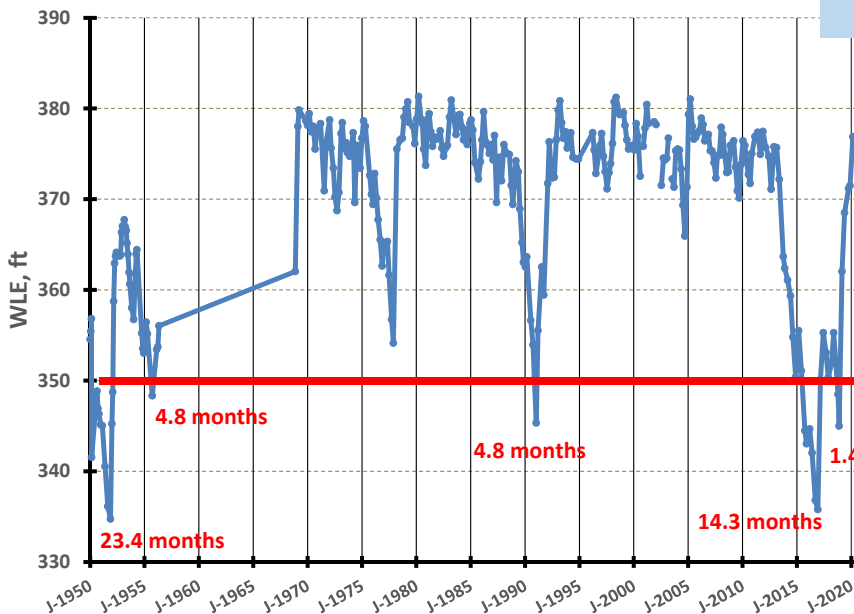


Willard Road



- ✓ **Trigger** - WLE equivalent to 5 cfs at Willard Rd
- ✓ **Trigger Action** - FPBGSA staff will survey SW depths at monitoring locations and compare to seasonal norms
- ✓ **Mitigation Action** - If SW depths at monitoring locations are less than 50% of norm, then add supplement water to the Lost Creek area from existing well(s)

Hydrograph - 03N20W01C04S



How Frequently Would GDE Triggers be Activated?

- ✓ **Trigger Activated**
 - ~48.7 months out of ~850.5 months (5.7%)
 - only during severe droughts

The graphic is contained within a black rectangular border. On the left is a large, light blue water drop shape filled with various terms related to water management and quality, such as "Subsidence", "Groundwater Decline", "Surface Water Depletion", "Sea Water Intrusion", "Groundwater Storage Decline", "Water Quality Degradation", and "Water Quality Improvement".

To the right of the drop is the word "Questions" in a bold, black, sans-serif font. Next to it is a 3D white figure of a person standing with their arms crossed, looking up at a large, bright red question mark.

Below these elements is a vintage-style advertisement for lemons. The top of the ad features the words "ALL YEAR" in large, bold, yellow letters. The central image shows a landscape with palm trees, mountains, and a field of lemons. At the bottom, there is a picture of a yellow lemon in a white paper wrapper. Text at the bottom of the ad includes "VENTURA COUNTY LEMONS" on the left, "FILLMORE LEMON ASSN. FILLMORE CALIFORNIA U.S.A." on the right, and "GROWN IN U.S.A." in small letters on the far right.

FPBGSA Proposed Monitoring Wells

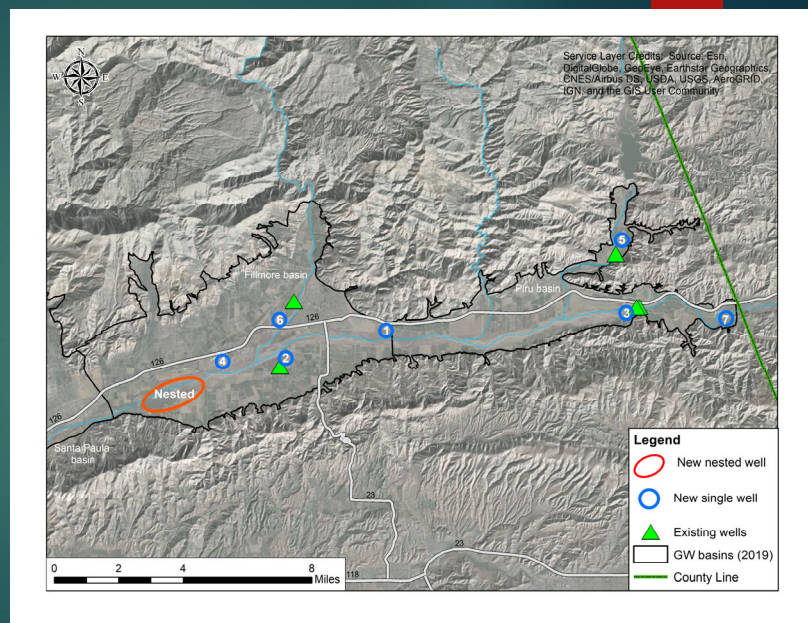
ERIC ELLIOTT, GIT
ASSOCIATE HYDROGEOLOGIST, UWCD

1

Proposed well sites following data gap analysis. Sites are numbered by priority ranking.

New deep nested well site in west Fillmore basin.

Seven additional shallow well locations proposed (~ 100 ft. depth).



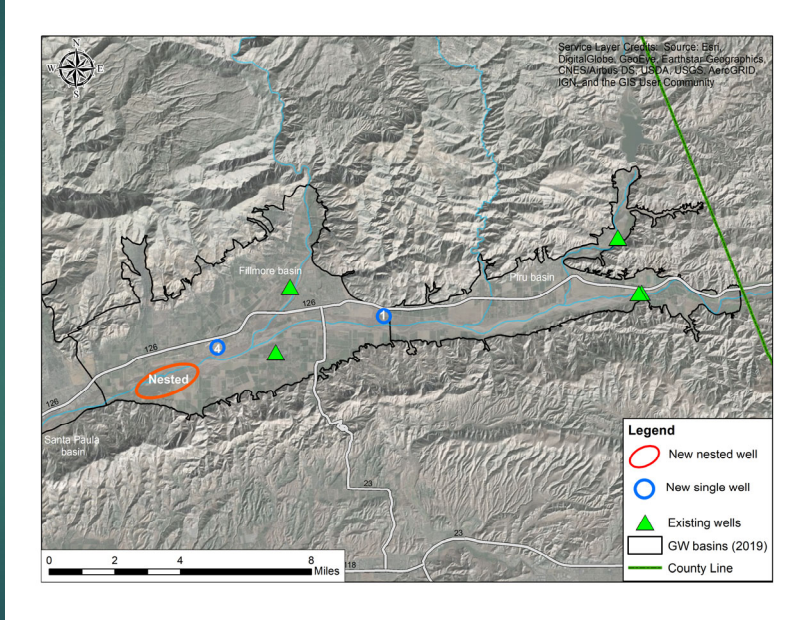
2

Staff identified four existing wells that fit location and depth criteria.

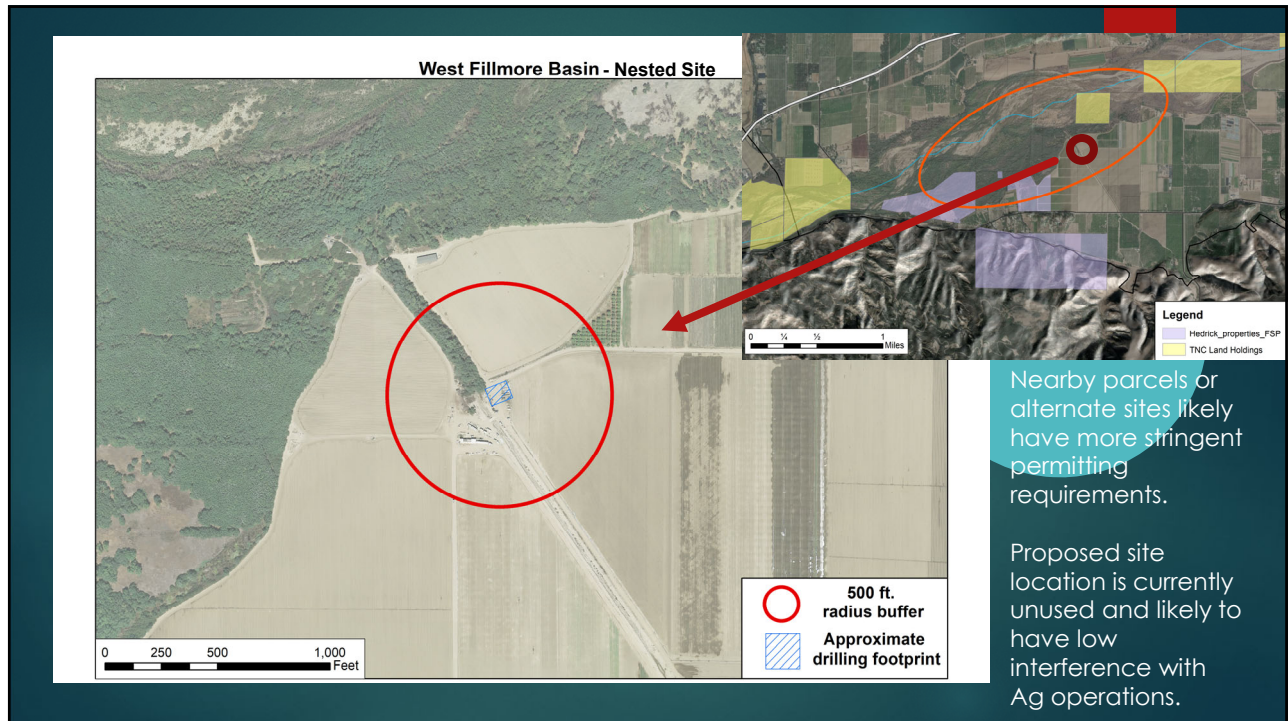
3 sites proposed for new well construction.

CEQA Categorical Exemption(s):
Section 15306 *Information Collection* – covering proposed new wells.

Section 15301 *Existing Facilities* – covering proposed well retrofits.



3

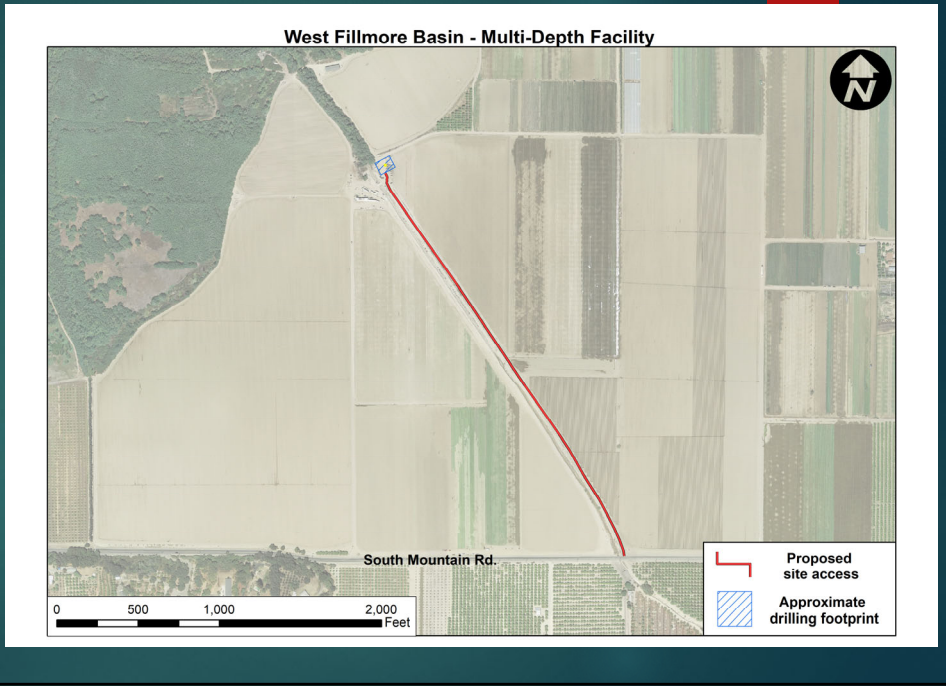


4

Nested Well Site:

Nearby well monitored by UWCD, unknown well construction.

Final site may be moved to accommodate property owner's land use plans.



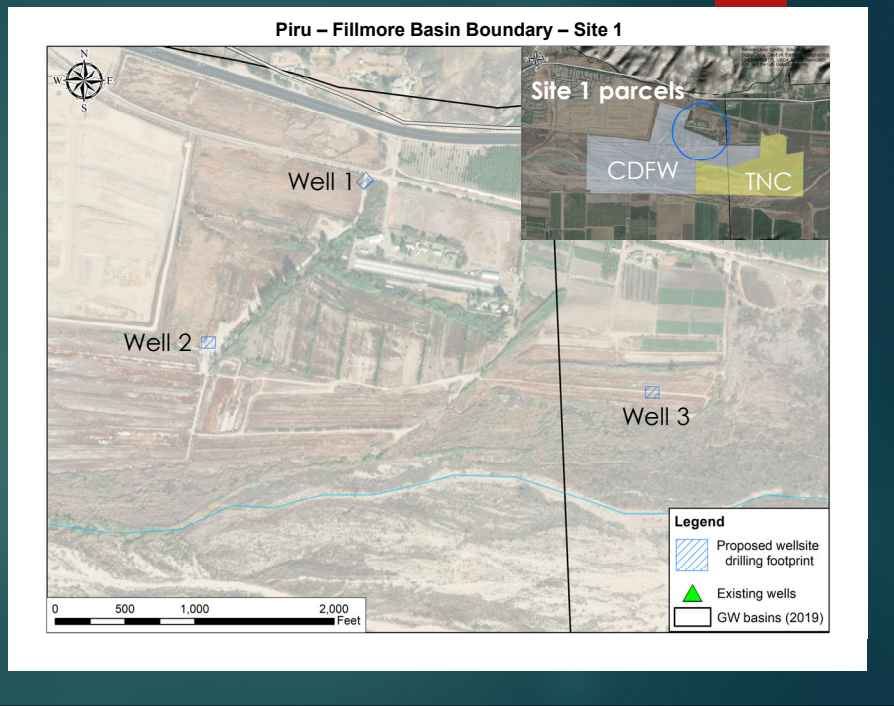
5

Site 1:

Existing wells in and around the site are screened too deep or in multiple zones.

Wells are sited greater than 500 ft. from riparian habitat.

Surface flows and effluent from hatchery may influence shallow water table in this vicinity.

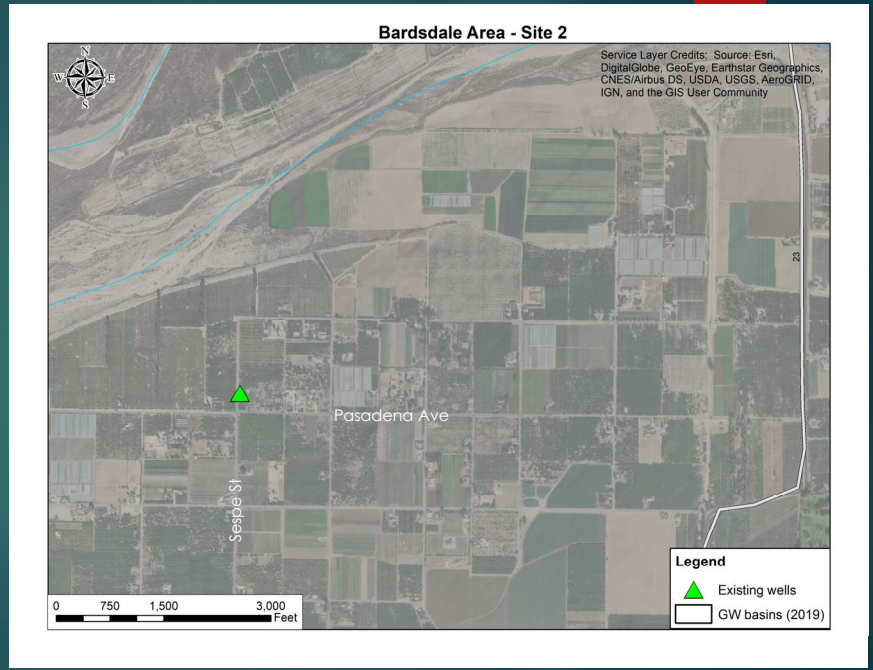


6

Site 2:
Existing well,
monitored by UWCD
monthly.

Unknown screen
interval, well drilled
to 92 ft. bgs in 1949.

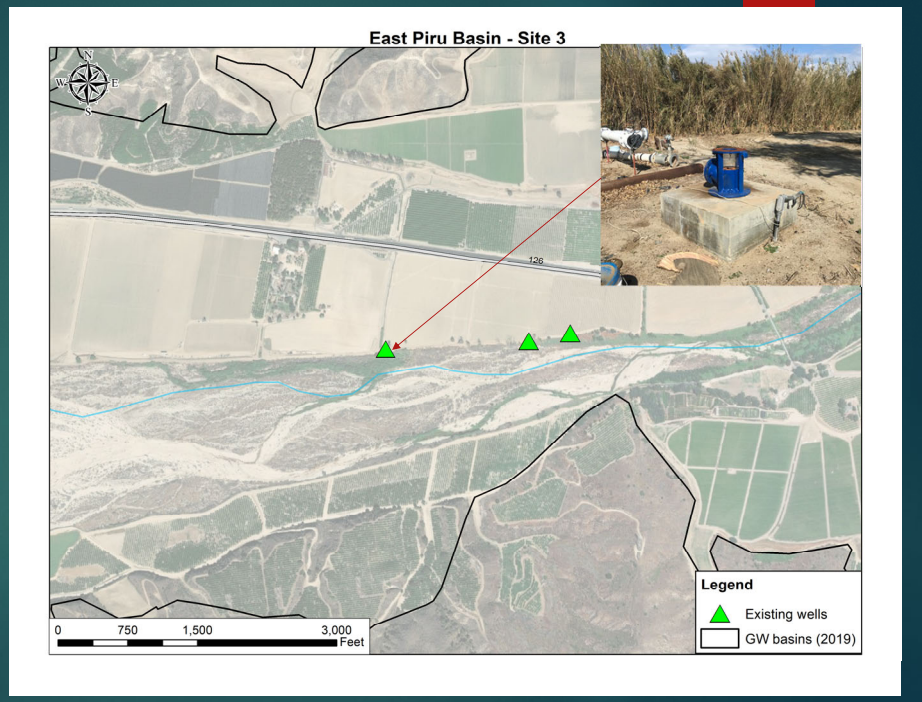
Request made to
modify wellhead for
transducer
installation.



7

Site 3:
Property manager
suggested a
nearby alternate
well, drilled to 120
ft. bgs. in 2007.

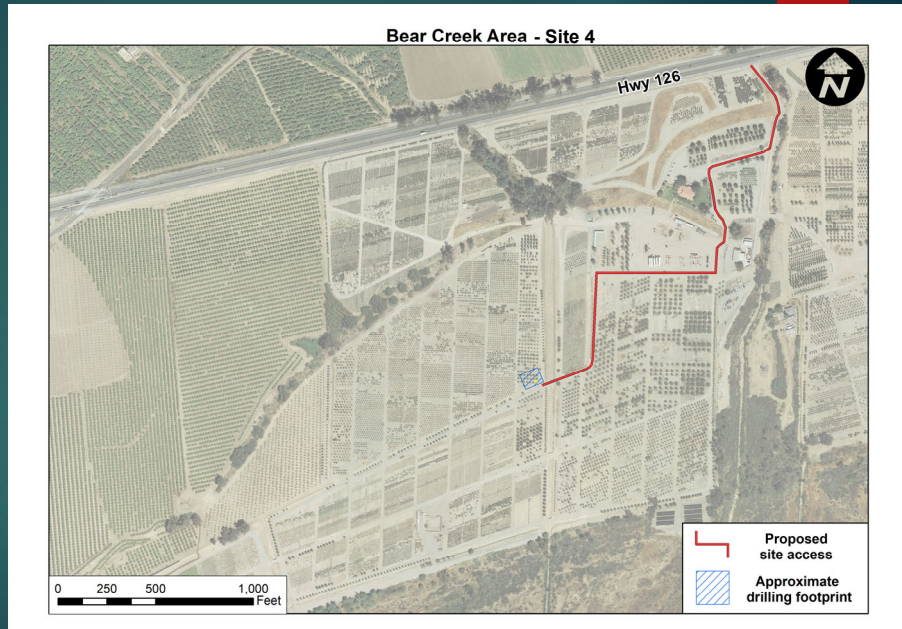
The well is not in
use and can be
converted to a
dedicated
monitoring well
with transducer.



8

Site 4:
Nearby wells with water level records are screened in deeper zones.

Currently in discussions with property managers for siting and drilling a new shallow well.

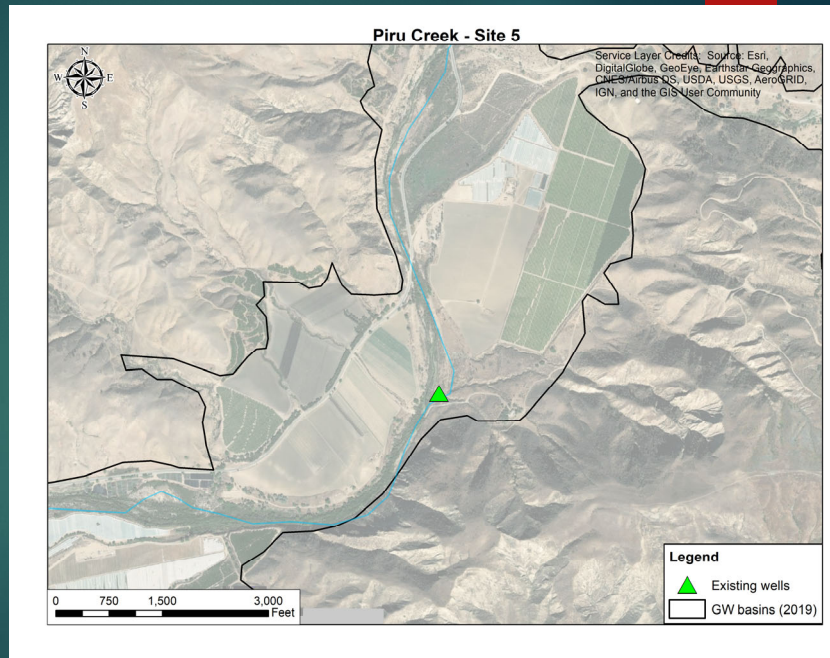


9

Site 5:

Shallow domestic well adjacent to Piru Creek

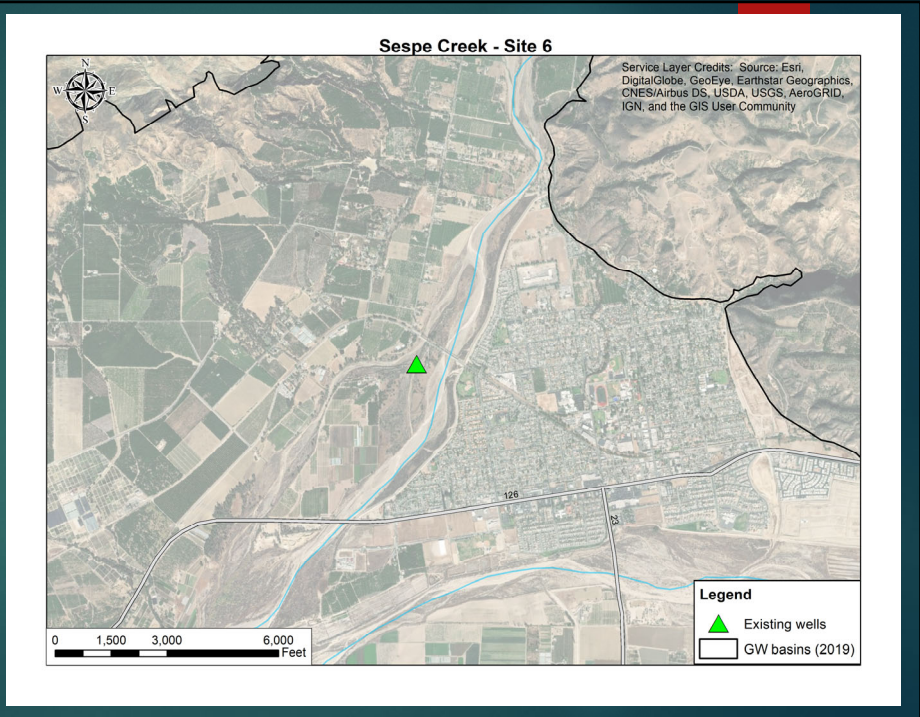
Owner has agreed to allow access for monitoring.



10

Site 6:
Shallow domestic
well drilled to 92 ft.
bgs.

Owner has
agreed to access
for monitoring,
and wellhead
modifications for
instrumenting with
a transducer.

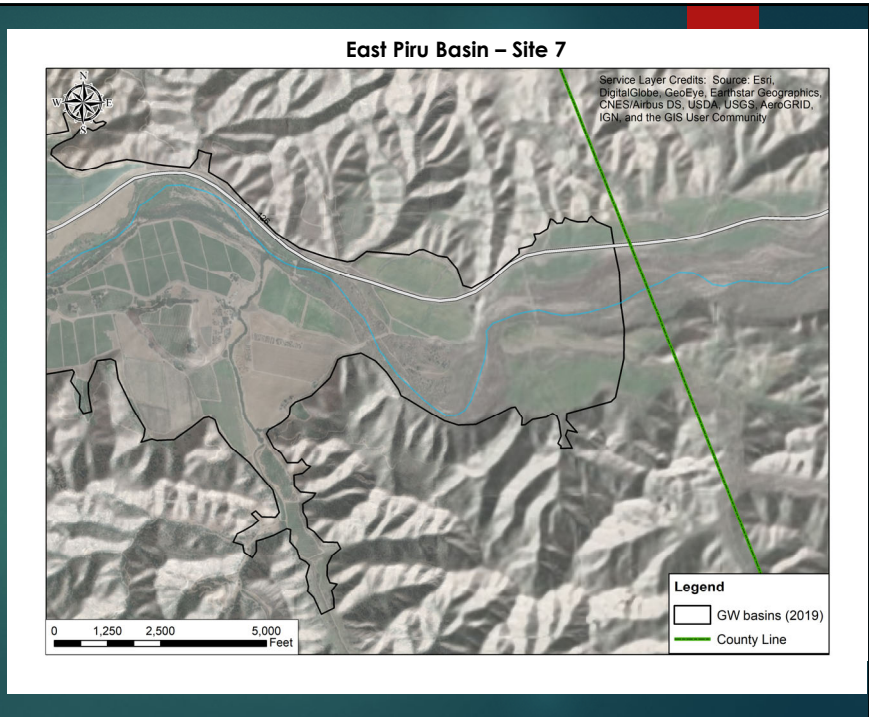


11

Site 7:
No longer
proposing new
monitoring well in
this vicinity.

Thin alluvium and
water table likely
very shallow and
stable.

Unlikely to secure
easement within
the year.



12

Schedule

	Feb.	March	April	May	June	July	August	Sep.	Oct.	Nov.
New construction										
Nested Site	Identify potential site/ parcel info.		Initiate discussion with land owner	Secure easement Submit CEQA findings	Open RFB for well construction	Well construction permits/waiver		Start construction	End construction	Include in monitoring network
Site 1	Identify potential site/ parcel info.		Initiate discussion with land owner	Secure easement Submit CEQA findings	Open RFB for well construction	Well construction permits/waiver	Start construction	End construction	Include in monitoring network	
Site 4	Identify potential site/ parcel info.		Initiate discussion with land owner	Secure easement Submit CEQA findings	Open RFB for well construction	Well construction permits/waiver	Start construction	End construction	Include in monitoring network	
Existing wells										
Site 2		Initial contact with land owner	Secure access agreement/easement	Open RFB for wellhead mods.	Wellhead mods.		Include in monitoring network			
Site 3	Initial contact with land owner	Secure access agreement/easement		Convert to dedicated monitoring well	Include in monitoring network					
Site 5	Initial contact with land owner	Secure access agreement/easement		Open RFB for wellhead mods.	Wellhead mods.		Include in monitoring network			
Site 6	Initial contact with land owner	Secure access agreement/easement		Open RFB for wellhead mods.	Wellhead mods.		Include in monitoring network			
Site 7										
	<div style="display: flex; justify-content: space-between; align-items: center;"> <div style="width: 15px; height: 10px; background-color: #90EE90; border: 1px solid black;"></div> Complete <div style="width: 15px; height: 10px; background-color: #FFFF00; border: 1px solid black;"></div> In Progress <div style="width: 15px; height: 10px; background-color: #FF0000; border: 1px solid black;"></div> Not started </div>									

Fillmore and Piru Basins GSA
Check Detail
May 12, 2021

<u>Type</u>	<u>Num</u>	<u>Date</u>	<u>Name</u>	<u>Account</u>	<u>Original Amount</u>
Check	11118	05/12/2021	Customer Refund Acct 200-01720-00	10000 · Bank of the Sierra	-238.68
Bill Pmt -Check	11119	05/12/2021	County of Ventura IT Services Department	10000 · Bank of the Sierra	-71.88
Bill Pmt -Check	11120	05/12/2021	Daniel B Stephens & Associates, Inc.	10000 · Bank of the Sierra	-29,997.48
Bill Pmt -Check	11121	05/12/2021	Olivarez Madruga Lemeiux O'Neill LLP	10000 · Bank of the Sierra	-880.00
Bill Pmt -Check	11122	05/12/2021	The Fillmore Gazette	10000 · Bank of the Sierra	-108.00



Fillmore and Piru Basins
Groundwater Sustainability Agency

Item No. **3C Consent Calendar**

DATE: **May 11, 2021**

TO: **Board of Directors**

SUBJECT: Monthly Financial Report

SUMMARY

The Board will receive the monthly financial report for the Fillmore and Piru Basins Groundwater Sustainability Agency (Agency).

BACKGROUND

UWCD accounting staff has prepared financial reports based on the Agency revenue and expenses for the month of April 2021.

FISCAL IMPACT

None

Attachments: April 30, 2021 P/L Budget Performance
 April 30, 2021 Balance Sheet

**Fillmore and Piru Basins GSA
Profit & Loss Budget Performance
March 31 through April 30, 2021**

	<u>Jul '20 - Apr 21</u>	<u>Annual Budget</u>	<u>Budget</u>
Income			
40001 · Groundwater Extraction Charge	406,743.96	540,000.00	75.32%
41000 · Grant Revenue			
41001 · State Grants	182,403.85	698,246.00	26.12%
41000 · Grant Revenue - Other	0.00		
Total 41000 · Grant Revenue	<u>182,403.85</u>	<u>698,246.00</u>	<u>26.12%</u>
47000 · Other Revenue			
47001 · Late Fees	2,122.34	0.00	
47002 · Miscellaneous Revenue	0.00		
47012 · Returned Check Charges	20.00	0.00	
47000 · Other Revenue - Other	0.00		
Total 47000 · Other Revenue	<u>2,142.34</u>	<u>0.00</u>	
47022 · Returned Check Charges	0.00		
Total Income	<u>591,290.15</u>	<u>1,238,246.00</u>	<u>47.75%</u>
Cost of Goods Sold			
50000 · Cost of Goods Sold	0.00		
Total COGS	<u>0.00</u>		
Gross Profit	<u>591,290.15</u>	<u>1,238,246.00</u>	<u>47.75%</u>
Expense			
52200 · Professional Services			
52230 · Prof Svcs - Grant Solicitation	0.00		
52240 · Prof Svcs - IT Consulting	1,197.58	980.00	122.20%
52250 · Prof Svcs - Groundwtr/GSP Prep			
52251 · Prof Svcs - UWCD GW Services	5,620.28	50,000.00	11.24%
52252 · Prof Svcs - GSP Consultant	378,746.06	350,814.00	107.96%
52250 · Prof Svcs - Groundwtr/GSP Prep - Other	0.00		
Total 52250 · Prof Svcs - Groundwtr/GSP Prep	<u>384,366.34</u>	<u>400,814.00</u>	<u>95.90%</u>
52270 · Prof Svcs - Accounting	12,683.03	10,000.00	126.83%
52275 · Prof Svcs - Admin/Clerk of Bd	20,922.44	10,000.00	209.22%
52280 · Prof Svcs - Executive Director	38,103.79	40,000.00	95.26%
52290 · Prof Svcs - Other	0.00	1,000.00	
52200 · Professional Services - Other	0.00		
Total 52200 · Professional Services	<u>457,273.18</u>	<u>462,794.00</u>	<u>98.81%</u>
52500 · Legal Fees			
52501 · Legal Counsel	18,961.10	20,000.00	94.81%
52500 · Legal Fees - Other	0.00		
Total 52500 · Legal Fees	<u>18,961.10</u>	<u>20,000.00</u>	<u>94.81%</u>
53000 · Office Expenses			
53010 · Public Information	108.00	1,000.00	10.80%
53020 · Office Supplies	565.69	500.00	113.14%
53026 · Postage & Mailing	1,170.75	2,000.00	58.54%
53040 · Membership Dues	0.00	0.00	
53060 · Computer Software	0.00	0.00	
53110 · Travel & Training	53.74	4,000.00	1.34%
53000 · Office Expenses - Other	0.00		
Total 53000 · Office Expenses	<u>1,898.18</u>	<u>7,500.00</u>	<u>25.31%</u>
53500 · Insurance			
53510 · Liability Insurance	2,115.73	2,500.00	84.63%
53500 · Insurance - Other	0.00		
Total 53500 · Insurance	<u>2,115.73</u>	<u>2,500.00</u>	<u>84.63%</u>
59000 · In-Kind Services - Expense	0.00		
66000 · Payroll Expenses	0.00		
70000 · Interest & Debt Service			
70120 · Interest Expense	0.00	0.00	
70000 · Interest & Debt Service - Other	0.00		
Total 70000 · Interest & Debt Service	<u>0.00</u>	<u>0.00</u>	
70130 · Bank Service Charges	20.00	0.00	
80000 · AR Write-Offs - Bad Debt Exp.	0.00	0.00	
81000 · Capital Expenditures			
81001 · Design & Cons - Monitoring Well	0.00		
81000 · Capital Expenditures - Other	0.00	200,000.00	
Total 81000 · Capital Expenditures	<u>0.00</u>	<u>200,000.00</u>	
Total Expense	<u>480,268.19</u>	<u>692,794.00</u>	<u>69.32%</u>
Net Income	<u>111,021.96</u>	<u>545,452.00</u>	<u>20.35%</u>

Fillmore and Piru Basins GSA
Balance Sheet
As of April 30, 2021

Apr 30, 21

ASSETS

Current Assets

Checking/Savings

10000 · Bank of the Sierra 592,010.08

Total Checking/Savings 592,010.08

Accounts Receivable

11000 · Accounts Receivable 300,819.56

Total Accounts Receivable 300,819.56

Total Current Assets 892,829.64

TOTAL ASSETS 892,829.64

LIABILITIES & EQUITY

Liabilities

Current Liabilities

Accounts Payable

20000 · Accounts Payable 31,057.36

Total Accounts Payable 31,057.36

Total Current Liabilities 31,057.36

Total Liabilities 31,057.36

Equity

32000 · Retained Earnings 750,750.32

Net Income 111,021.96

Total Equity 861,772.28

TOTAL LIABILITIES & EQUITY 892,829.64



Item No. **4A Motion**

DATE: May 11, 2021 (for May 20, 2021 meeting)

TO: Board of Directors

FROM: Anthony A. Emmert, Executive Director

SUBJECT: **Fiscal Year 2020-21 Budget Amendments**

RECOMMENDED ACTION

The Board will consider approving the proposed budget modifications for Fiscal Year 2020-21.

BACKGROUND

At the end of the third quarter of FY 20-21, staff evaluated current expenditures to date and projected expenditures for the remainder of the fiscal year, as well as projected revenue.

FISCAL IMPACT

Due to higher than projected groundwater pumping, revenue is projected to be \$108,000 higher than budgeted. Due to less progress than projected on the GSP planning process and Monitoring Wells Project, grant revenue is \$195,000 lower than expected. Recognizing these will result in a net revenue reduction of \$87,000.

More public outreach meetings than projected resulted in approximately \$30,000 higher expenditure than expected on consultant work, as well as higher expenditures on Clerk of the Board and legal counsel. Less progress than expected on the Monitoring Wells Project resulted in an approximately \$100,000 reduction in capital expenditures. Recognizing these will result in a reduction in expenditures of \$45,000.

The overall recommended budget adjustment will result in a \$42,000 reduction in net income.

ATTACHMENTS

Proposed Amendments to FY 2020-21 Budget

Proposed Motion: Provide comments and direction regarding the proposed edits to the Agency Bylaws.		
1 st : Director _____	2 nd : Director _____	
Voice/Roll call vote: Director Kimball:	Director Long:	Director McFadden:
Director Meneghin:	Director Pace:	Director Villasenor:

**Fillmore and Piru Basins Groundwater Sustainability Agency
Proposed Budget Amendments
FY 2020-21**

Revenue

Acct. Numl	Acct. Name	Increase/ (Decrease)	Explanation
40001	Groundwater Extraction Fees	108,000	July - December pumping volume was 9,000 AF higher than budgeted.
41000	Grant Revenue	(195,000)	Grant revenue is below budget due to the pace of work on GSP. Revenue is expected to be realized next year.
Total Revenue Adjustments		(87,000)	

Expenses

Acct. Number	Acct. Name	Increase/ (Decrease)	Explanation
52240	Professional Fees - IT Consulting	500	County IT Servcies fee structure changed
52252	Professional Fees - Groundwater Consultants	30,000	Public outreach by GSP consultant has increased significantly.
52270	Professional Fees - Accounting	7,000	Level of effor by UWCD Finance staff has increased as a result of grant administration and grant invoice preparation
52275	Professional Fees - Clerk of the Board	10,000	Level of effort by UWCD Admin staff has increased
52501	Legal Counsel	8,000	Level of effort from Agency legal counsel has increased
81000	Capital Expenditures	(100,000)	Timing of monitoring wells has shifted and more costs will be incurred next fiscal year
Total Expense Adjustments		(45,000)	
Increase (Decrease) to Net Income		<u>(42,000)</u>	



Item No. 4B Motion

DATE: May 11, 2021 (for May 20, 2021 meeting)

TO: Board of Directors

FROM: Anthony A. Emmert, Executive Director

SUBJECT: Fiscal Year 2021-22 Budget and Groundwater Extraction Fee Rates

RECOMMENDED ACTION

The Board will review the proposed budget and groundwater extraction fee rates for Fiscal year 2021-2022 and provide staff with comments and direction.

FISCAL IMPACT

None. The Board will provide direction to staff regarding the FY 2021-22 budget. Any feedback will be incorporated into a final proposed budget that will be discussed and voted on by the Board at the June 17, 2021 meeting. The adoption of an annual budget and groundwater extraction fee rates allows the Agency to collect groundwater extraction fees from pumpers within Agency boundaries and authorizes the payment of Agency expenditures.

ATTACHMENTS

Proposed FY 2021-22 Budget

Proposed Motion: Provide comments and direction regarding the proposed edits to the Agency Bylaws.

1st: Director _____ 2nd: Director _____

Voice/Roll call vote: Director Kimball: Director Long: Director McFadden:

Director Meneghin: Director Pace: Director Villasenor:

Fillmore and Piru Basins GSA FY 21-22 Proposed Budget

	FY 21-22 Accrual Basis Proposed Budget	FY 20-21 Accrual Basis Adopted Budget
Income		
40001 · Groundwater Extraction Charge*	540,000.00	540,000.00
41000 · Grant Revenue		
41001 · State Grants	537,970.00	698,246.00
Total 41000 · Grant Revenue	537,970.00	698,246.00
47000 · Other Revenue		
47001 · Late Fees		
47012 · Returned Check Charges		
Total 47000 · Other Revenue		
Total Income	1,077,970.00	1,238,246.00
Gross Profit	1,077,970.00	1,238,246.00
Expense		
52200 · Professional Services		
52240 · Prof Svcs - IT Consulting	1,700.00	980.00
52250 · Prof Svcs - Groundwtr/GSP Prep		
52251 · Prof Svcs - UWCD GW Services	0.00	50,000.00
52252 · Prof Svcs - GSP Consultant	235,000.00	350,814.00
Total 52250 · Prof Svcs - Groundwtr/GSP Prep	235,000.00	400,814.00
52270 · Prof Svcs - Accounting	24,200.00	10,000.00
52275 · Prof Svcs - Admin/Clerk of Bd	25,000.00	10,000.00
52280 · Prof Svcs - Executive Director	40,000.00	40,000.00
52290 · Prof Svcs - Other	0.00	1,000.00
Total 52200 · Professional Services	325,900.00	462,794.00
52500 · Legal Fees		
52501 · Legal Counsel	30,000.00	20,000.00
Total 52500 · Legal Fees	30,000.00	20,000.00
53000 · Office Expenses		
53010 · Public Information	1,000.00	1,000.00
53020 · Office Supplies	500.00	500.00
53026 · Postage & Mailing	2,000.00	2,000.00
53110 · Travel & Training	4,000.00	4,000.00
Total 53000 · Office Expenses	7,500.00	7,500.00
53500 · Insurance		
53510 · Liability Insurance	2,500.00	2,500.00
Total 53500 · Insurance	2,500.00	2,500.00
70000 · Interest & Debt Service		
70120 · Interest Expense	0.00	0.00
Total 70000 · Interest & Debt Service	0.00	0.00
70130 · Bank Service Charges		
81000 · Capital Expenditures	700,000.00	200,000.00
Total Expense	1,065,900.00	692,794.00
Net Income	12,070.00	545,452.00
FY 21-22 Cash Flow Projection		
Est. Beginning Balance 6/30/21	414,564.80	
Cash Revenue	726,718.20	
Cash Expenses	1,065,900.00	
Est. Ending Balance 6/30/22	75,383.00	



Item No. 4C Motion
DATE: May 11, 2021 (for May 20, 2021 meeting)
TO: Board of Directors
FROM: Anthony A. Emmert, Executive Director
SUBJECT: **Resolution 2021-02 Approving the Monitoring Wells Project and CEQA Notice of Categorical Exemption Determination for the Monitoring Wells Project**

RECOMMENDED ACTION

The Board will consider adopting Resolution 2021-02 approving the Monitoring Wells Project and finding that the Project is Categorically Exempt from the California Environmental Quality Act and directing staff to file a Notice of Exemption.

DISCUSSION

The construction of additional monitoring wells is included in the Agency’s planned scope of work, to fill recognized gaps in data that will be needed by the Agency to evaluate its progress toward basins sustainability and to inform future updates of its groundwater sustainability plans (GSPs). The monitoring wells are also a significant scope item in the Agency’s \$1.5 million groundwater sustainability planning grant from the California Department of Water Resources.

The proposed project includes the conversion of existing shallow wells, the construction of up to four single-completion shallow wells, and one multiple-completion well. Staff recommends that the Board make a finding that the project is Categorically Exempt from the California Environmental Quality Act, as per the attached Notice of Exemption. Staff recommends that the Board approve the project, find that the Project is Categorically Exempt, and direct staff to file the Notice of Exemption.

FISCAL IMPACT

The Monitoring Wells Project is budgeted in the Agency’s Fiscal Year 2020-2021 and 2021-2022 budget and is included in the Agency’s grant agreement with the California Department of Water Resources.

ATTACHMENTS

CEQA Notice of Exemption

Resolution 2021-02

Proposed Motion: Provide comments and direction regarding the proposed edits to the Agency Bylaws.

1st: Director _____ 2nd: Director _____
Voice/Roll call vote: Director Kimball: Director Long: Director McFadden:
Director Meneghin: Director Pace: Director Villasenor:

NOTICE OF EXEMPTION

To:
Office of Planning and Research
P.O. Box 3044, Room 113
Sacramento, CA 95812-3044

From:
United Water Conservation District
1701 North Lombard Street, Suite 200
Oxnard, CA 93030

Ventura County Clerk
800 South Victoria Ave
Ventura, CA 93009

Project Title: Monitoring Wells Project (Project)
Fillmore and Piru Basins Groundwater Sustainability Agency

Project Location: Piru and Fillmore, Ventura County. The Project includes multiple well site locations in the Santa Clara River Watershed, specifically in Piru and Fillmore ground water basins (Figure 1).

Name of Public Agency Approving Project (Lead Agency): Fillmore and Piru Basins Groundwater Sustainability Agency (FPBGSA)

Name of Person or Agency Carrying Out Project: FPBGSA

Project Description: The FPBGSA is a joint powers authority agency established through a Joint Exercise of Powers Agreement between the City of Fillmore, the County of Ventura, and the United Water Conservation District (United) for the purpose of sustainably managing the Piru groundwater basin and the Fillmore groundwater basin in compliance with the California Sustainable Groundwater Management Act of 2014 (SGMA). The City of Fillmore and County of Ventura are local agencies with land use and water use authorities. United is a California special district with a service area that includes the Ventura County portion of the Santa Clara River Valley. United serves as a steward for managing the surface water and groundwater resources within all or part of seven groundwater basins, including the Piru and Fillmore basins.

Both the County of Ventura and United conduct groundwater and surface water monitoring. Past and current monitoring has included both groundwater elevation monitoring and water quality sampling and analysis. The two agencies share monitoring data. They also share monitoring data with the State of California. Although the County of Ventura and United have a reasonably robust well monitoring network, there are areas within the basins where additional data may be useful in reducing uncertainty and refining understanding of hydrologic conditions. The areas of interest are in important locations where additional insight into groundwater recharge, discharge, and surface water-groundwater interaction would benefit local agencies' efforts in effectively monitoring and managing sustainability of the basins. In compliance with the SGMA, the FPBGSA, as a local Groundwater Sustainability Agency, must develop and implement Groundwater

Sustainability Plans for managing the Piru and Fillmore basins. These plans consider sustainability indicators, such as chronic groundwater level decline and interconnected surface water depletion, among others. Data collected from the proposed wells will aid in evaluating the effectiveness of the plan and basin management.

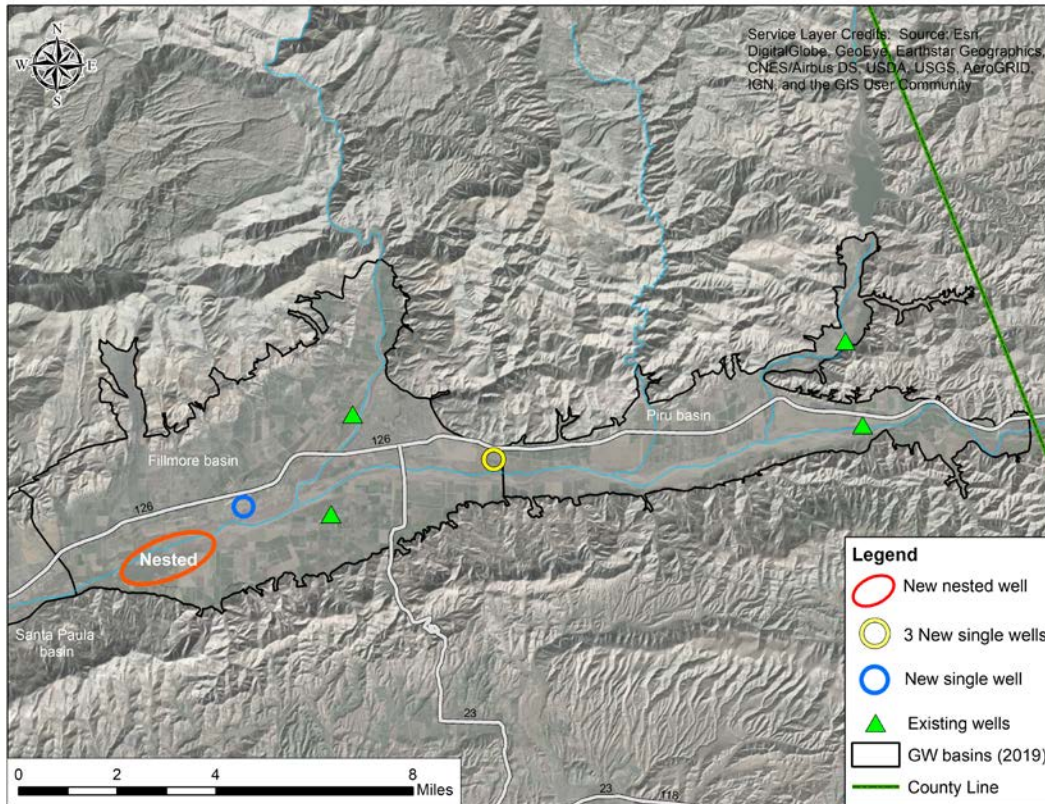
The proposed Project includes retrofit of up to four existing wells, and installation of four shallow monitoring wells and one nested monitoring well (Figure 1). The proposed well retrofits include installation of a pressure transducer in the existing well for automated data collection. Modifications to the wellheads will include reaming the access port on the top plate of the well to a larger diameter sufficient to fit a pressure transducer unit, or installation of a new top plate. A licensed water well contractor (C-57) will perform the work. The work will include removal of the existing well seal and top plate, and reinstalling after the access port has been modified. Work is expected to be completed in one day, per well. The retrofit will not result in an expansion of the existing well footprint.

The four shallow monitoring wells will be constructed using an auger drilling rig to drill the borehole and install the well. The well will be constructed of three-inch Schedule-40 PVC perforated pipe installed to approximately 100 ft below ground surface (bgs). After installation, the well will be grouted with a surface seal and a cement pad will be poured at or above grade. In addition, a well cap and bollards will be installed to protect the well from damage. The permanent footprint of each new monitoring well installation will include a cement pad no larger than 10 by 10 feet. Typically, a well of this design can be drilled in a week or less. Once drilling commences, the drill-rig will operate continuously (24 hours a day) until the borehole is completed to the total depth, estimated to be 100 ft bgs. See Attachment A for an example of a completed well (Figures 2 and 3), auger drill rig set-up (Figure 4), and generalized schematic (Figure 5).

The nested monitoring well will be constructed using a reverse-rotary drill rig to drill the boreholes and install the well. The nested well includes a single borehole with multiple wells installed at a range of depths. The well(s) will be constructed of three-inch Schedule-40 PVC perforated pipe installed at a range of depths with the maximum depth of approximately 400 ft bgs. The permanent footprint of the nested monitoring well installation will include a cement pad no larger than 10 by 10 feet and will include a well cap and bollards to prevent damage to the well. Typically, a well of this design will take approximately 4 weeks to complete. Once drilling commences, the drill-rig will operate continuously (24 hours a day) until the borehole is completed to the total depth, estimated to be 800 ft bgs. See Attachment B for an example reverse-rotary drill rig set-up (Figure 6) and generalized schematic (Figure 7).

For all monitoring well construction, an onsite hydrogeologist will collect sample cuttings and prepare a lithologic log of the boreholes. Excavated material will be used to back-fill the boreholes to achieve appropriate well depth and any remaining materials will be removed from site. After well installation, the (above surface) site(s) will be cleaned and returned to pre-construction conditions to the extent possible. Project work for constructing monitoring wells will include a temporary staging area for the drill rig, material storage and associated equipment.

Figure 1. Project area and proposed monitoring well locations.



Exempt Status:

- Ministerial (Sec. 21080(b)(1); 15268)
 - Declared Emergency (Sec. 21080(b)(3); 15269(a))
 - Emergency Project (Sec. 21080(b)(4); 15269(b)(c))
 - Categorical Exemption. State type and section number: **Class 6, Section 15306 – Information Collection and Class 1, Section 15301 Existing Facilities**
 - Statutory Exemptions
-

Reasons Why Project is Exempt: The Project is categorically exempt pursuant to California Environmental Quality Act (CEQA) Guidelines Section 15306 *Information Collection* and Section 15301 *Existing Facilities*. Section 15306 *Information Collection* consists of basic data collection, research, experimental management, and resource evaluation activities which do not result in a serious or major disturbance to an environmental resource. The Project's purpose is to collect groundwater data to support groundwater research to fill an existing data gap and to fundamentally support local groundwater sustainability management. The Project will not impact an environmental resource. Therefore, the *Information Collection* exemption is applicable. Section 15301 *Existing Facilities* provides for the operation, repair, maintenance, permitting, leasing,

licensing, or minor alteration of existing public or private structures, facilities, or mechanical equipment involving negligible or no expansion of existing or former use. The Project includes retrofitting four existing wells to support automated data collection. The retrofit will not result in an expansion of existing use or expansion of the existing well footprint and work conducted to complete the retrofit will not result in adverse impacts. The temporary staging area will be minimal including space for a work truck and completed in one day per well. Therefore, the *Existing Facilities* exemption is applicable to the proposed retrofit wells.

Section 15300.2 *Exceptions – (a) Location*, a project exempt under Class 6 that is ordinarily insignificant in its impact on the environment may in a particularly sensitive environment be significant. In Ventura County, the Santa Clara River floodplain has federal critical habitat defined for least Bell's vireo (*Vireo bellii pusillus*), southwestern willow flycatcher (*Empidonax traillii extimus*), and southern California steelhead (*Oncorhynchus mykiss*). No Project activities will occur within the streambed or channel of the Santa Clara River (avoiding potential to impact to southern California steelhead and its designated critical habitat). During nesting bird season (February 1 – September 15), all well construction will take place a minimum of 500-feet from riparian vegetation, (avoiding potential impact to least Bell's vireo and southwestern willow flycatcher). Proposed well site locations within 500-feet of riparian vegetation will be conducted after September 15 and no riparian vegetation will be removed or trimmed (avoiding potential impact to least Bell's vireo and southwestern willow flycatcher designated critical habitat). Construction of the shallow monitoring well(s) scheduled to occur within the nesting bird season and greater than 500 feet outside of riparian habitat, a qualified biologist will conduct a nesting bird survey of the well site and the area within a 500-foot vicinity of the well site. If a nesting bird is found, the location of the nest will be documented and to avoid all impacts, construction will not begin until the qualified biologist has confirmed breeding/nesting is complete, the nestlings have fledged or the nest to have been abandoned. Therefore, by integrating these measures, the Project will avoid impacts to biological resources. Thus, no significant impacts are expected occur and the exceptions to categorical exemption set forth in CEQA Guidelines Section 15300.2 would not apply.

Lead Agency Contact Person: Anthony A. Emmert, Executive Director
Telephone: 805-525-4431
Email: TonyE@unitedwater.org

Kelly Long
Chair, Fillmore and Piru Basins Groundwater Sustainability Agency

Date

Date OPR received for filing: _____

Attachments

Attachment A – Monitoring well examples:



Figure 2: Completed monitoring well and surface casing with bollards.



Figure 3: Completed monitoring well with flush pad and vault.



Figure 4: Example auger drill rig.

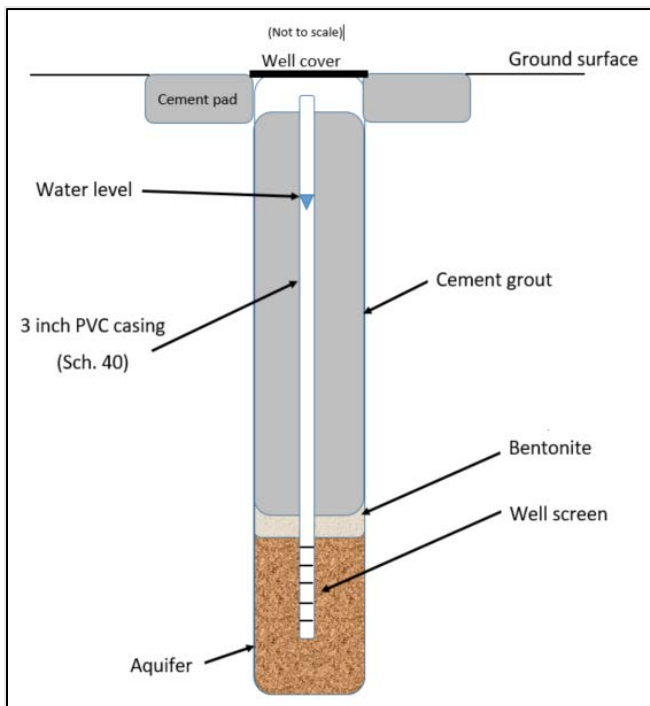


Figure 5. Generalized schematic of a monitoring well.

Attachment B – Nested monitoring well examples:



Figure 6. Reverse-rotary drill rig.

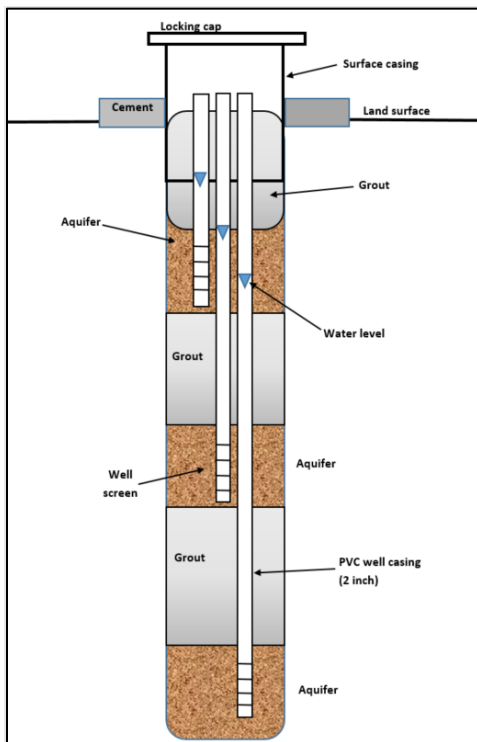


Figure 7. Generalized schematic of a nested monitoring well.

RESOLUTION NO. 2021-02

**A RESOLUTION OF
THE BOARD OF DIRECTORS OF
THE FILLMORE AND PIRU BASINS
GROUNDWATER SUSTAINABILITY AGENCY
APPROVING THE MONITORING WELLS PROJECT AND FINDING THAT
THE PROJECT IS CATEGORICALLY EXEMPT FROM THE CALIFORNIA
ENVIRONMENTAL QUALITY ACT**

WHEREAS, the Fillmore and Piru Basins Groundwater Sustainability Agency (Agency) has determined that data gaps exist in the monitoring of shallow groundwater in several critical areas within the Piru and Fillmore groundwater basins; and

WHEREAS, the Agency has developed a Monitoring Wells Project to construct new monitoring wells in the critical areas and modify existing wells in those critical areas for the purpose of collecting data on shallow groundwater that can be used by the Agency for its future groundwater management and planning activities; and

WHEREAS, the Agency has secured a groundwater sustainability planning grant from the State of California Department of Water Resources to reimburse the District for up to seventy-five percent of the cost of the Monitoring Wells Project; and

NOW, THEREFORE, BE IT RESOLVED that the Board of Directors of the Fillmore and Piru Basins Groundwater Sustainability Agency does hereby **RESOLVE**, **DETERMINE**, and **ORDER** as follows:

1. California Environmental Quality Act Compliance (CEQA)

The Board of Directors finds that approval of the proposed Monitoring Wells Project is not subject to environmental review under CEQA pursuant to the State of California CEQA Guidelines Section 15306 *Information Collection* and Section 15301 *Existing Facilities* for the modifications to existing wells, and Section 15300.2 *Exceptions* for the construction of the new monitoring wells, as the projects have been designed and planned so that no significant impacts are expected to occur and the exceptions to categorical exemption set forth in CEQA Guidelines Section 15300.2 would not apply.

2. Approval of the Project

The Board of Directors hereby approves the Monitoring Wells Project and its implementation.

3. Notice of Exemption Filing

The Board of Directors hereby directs staff to execute and file a Notice of Exemption for the project as permitted by law.

RESOLUTION No. 2021-01 (continued)

We, the undersigned, being the duly qualified and current Chair and Secretary, respectively, of the Board of Directors of Fillmore and Piru Basins Groundwater Sustainability Agency, do hereby certify that the above and foregoing resolution was duly and regularly adopted and passed by resolution of the Board of Directors of said groundwater sustainability agency at a meeting thereof held on the 20th day of May 2021, by the following vote:

In favor thereof, Directors:

Abstain, Directors:

Not in favor, Directors:

Absent, Directors:

ATTEST: _____
Kelly Long, Chair, FPB GSA Board of Directors

ATTEST: _____
Edwin T. McFadden III, Vice Chair/Secretary/Treasurer, FPB GSA Board
of Directors



Fillmore and Piru Basins
Groundwater Sustainability Agency

Item No. **4D Motion Item**
DATE: May 14, 2021 (for May 20, 2021 meeting)
TO: Board of Directors
FROM: Anthony Emmert, Executive Director
SUBJECT: **Sustainable Management Criteria**

RECCOMENDATION:

The Board will consider adoption of the Agency’s Sustainable Management Criteria matrix and associated management actions and studies and provide direction to Agency staff and consultant team toward development of the draft Groundwater Sustainability Plans.

FISCAL IMPACT

None.

ATTACHMENTS

None.

Proposed Motion:				
1 st : Director _____		2 nd : Director _____		
Voice/Roll call vote:	Director Kimball: Director Pace:	Director Long: Director Villasenor:	Director McFadden	Director Meneghin:



Item No. 4E Motion

DATE: May 14, 2021 (for May 20, 2020 meeting)

TO: Board of Directors

FROM: Anthony A. Emmert, Executive Director

SUBJECT: Special Board Meeting for Sustainable Management Criteria

RECOMMENDED ACTION

The Board will consider selecting a date for a Special Board Meeting in late May or early June 2021 to consider approval of the Sustainable Management Criteria matrix and any associated monitoring studies and management actions.

FISCAL IMPACT

There are no fiscal impacts.

ATTACHMENTS

Proposed Motion:

1st: Director _____ 2nd: Director _____
Voice/Roll call vote: Director Kimball: Director Long: Director McFadden:
Director Meneghin: Director Pace: Director Villasenor: