



**Fillmore and Piru Basins**  
Groundwater Sustainability Agency

**Board of Directors Meeting**  
**Thursday, March 19, 2026, 4:00 p.m.**  
**City of Fillmore City Hall Council Chambers**  
**250 Central Avenue, Fillmore, CA 93015**

**To participate in the Board of Directors meeting via Zoom, please access:**  
<https://us02web.zoom.us/j/85480305580?pwd=ZnFBWGhtVU05dXd3REFkM255c0h6UT09>

Meeting ID: **854 8030 5580** Password: **FPBGSA**

To hear just the audio portion of the meeting, phone into:  
Toll-free number: **877 853 5247** Meeting ID: **854 8030 5580**

## **AGENDA**

### **1. CALL TO ORDER**

**1A Pledge of Allegiance**

**1B Directors Roll Call**

**1C Public Comments**

Fillmore and Piru Basins Groundwater Sustainability Agency (Agency) will accept public comment concerning agenda items at the time the item is considered and on any non-agenda item within the jurisdiction of the Board during the agendaized Public Comment period. No action will be taken by the Board on any non-agenda item. In accordance with Government Code § 54954.3(b)(1), public comment will be limited to three (3) minutes per speaker per issue.

**1D Approval of Agenda**  
**Motion**

### **2. UPDATES**

**2A Director Announcements/Board Communications:**  
Oral Reports from the Board.

**Fillmore Pumpers Association Stakeholder Director Update**

**Piru Pumpers Association Stakeholder Director Update**

**Environmental Stakeholder Director Update**

**City of Fillmore Member Director Update**

**United Water Conservation District Member Director Update**

**County of Ventura Member Director Update**

**2B Executive Director Update**  
**Information Item**

The Executive Director will provide an informational update on Agency activities since the previous Special Board of Directors meeting of February 19, 2026.

**2C Legal Counsel Update**  
**Information Item**

Legal Counsel will provide an informational update on Agency’s legal issues and concerns since the previous Special Board of Directors meeting of February 19, 2026.

**2D GSP Consultant Update**  
**Information Item**

Representatives from Daniel B Stephens & Associates will provide an informational update on the Agency’s groundwater sustainability planning activities since the previous Special Board of Directors meeting of February 19, 2026.

**3. CONSENT CALENDAR**

All matters listed under the Consent Calendar are considered routine by the Board and will be enacted by one motion. There will be no separate discussion of these items unless a Board member pulls an item from the Calendar. Pulled items will be discussed and acted on separately by the Board. Members of the public who want to comment on a Consent Calendar item should do so under Public Comments. (ROLL CALL VOTE REQUIRED)

**3A Approval of Minutes**

The Board will consider approving the Minutes from the Special Board of Directors meeting of February 19, 2026.

**3B Approval of Warrants**

The Board will consider approving payment of outstanding vendor invoices:

United Water Conservation District	\$29,743.54
Aleshire & Wynder LLP	\$ 1,463.20
DBS&A	\$ 1,426.00
Stillwater Sciences Inc.	\$ 925.50

**3C Monthly Financial Report**

The Board will receive the monthly financial report for the Fillmore and Piru Basins Groundwater Sustainability Agency.

**4. MOTION ITEMS**

**4A Write-Off of Uncollectible Receivable**  
**Motion**

The Board will consider approving the write-off of uncollectible receivables.

**4B Annual Reports to California Department of Water Resources**

**Motion**

The Board will consider approving the Water Year 2024-2025 Annual Reports to the California Department of Water Resources for the Fillmore subbasin and Piru subbasin.

**4C Proposed Amendments to Work Plan and Schedule**

The Board will receive a presentation from staff and DBS&A on proposed changes to the Agency’s Fiscal Year 2025-2026 Work Plan and Schedule and provide comments and directions.

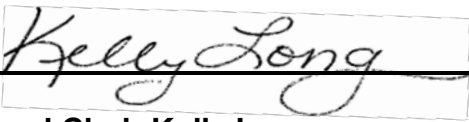
**5. FUTURE ITEMS**

**6. ADJOURNMENT**

The Board will adjourn to the next **Regular Board Meeting on Thursday, April 16, 2026**, or call of the Chair.

*Materials, which are non-exempt public records and are provided to the Board of Directors to be used in consideration of the above agenda items, including any documents provided subsequent to the publishing of this agenda, are available for inspection at UWCD’s offices at 1701 N. Lombard Street in Oxnard during normal business hours.*

*The Americans with Disabilities Act provides that no qualified individual with a disability shall be excluded from participation in, or denied the benefits of, the District’s services, programs or activities because of any disability. If you need special assistance to participate in this meeting, or if you require agenda materials in an alternative format, please contact the UWCD Office at (805) 525-4431 or the City of Fillmore at (805) 524- 1500. Notification of at least 48 hours prior to the meeting will enable the District to make appropriate arrangements*

Approved:  \_\_\_\_\_

**Board Chair Kelly Long**

**Posted: (date) March 13, 2026 (time) 5:00 p.m.  
At: <https://www.FPBGSA.org>**

**(attest) Eva Ibarra**

**Posted: (date) March 13, 2026 (time) 5:05 p.m.  
At: <https://www.facebook.com/FPBGSA>**

**(attest) Eva Ibarra**

**Posted: (date) March 13, 2026 (time) 5:10 p.m.  
At: UWCD, 1701 N. Lombard Street, Oxnard**

**(attest) Eva Ibarra**

**Posted: (date) March 13, 2026 (time) 5:15 p.m.  
At: Fillmore City Hall, 250 Central Avenue, Fillmore, CA**

**(attest) Juana Garcia**



**Special Board of Directors Meeting**  
**Thursday, February 26, at 4:00 p.m.**  
**MINUTES**

**Directors in Attendance**

Director John Garnica  
Director Brian Hauss  
Director Debbie Jackson  
Director Gordon Kimball  
Director Kelly Long  
Director Candice Meneghin

**Staff in Attendance**

Anthony Emmert, executive director  
Eva Ibarra, clerk of the board  
Patrick O'Connell, senior hydrogeologist (virtual)  
Christine Carson, legal counsel  
Zachary Plummer, it staff

**Public in Attendance**

Sara Guzman, UWCD (virtual)  
Burt Handy (virtual)  
Taylor Jones, UWCD (virtual)  
Hayley Luna (virtual)  
Tony Morgan, DBS&A (virtual)  
Gus Tolley, DBS&A (virtual)  
Brian Zahn, UWCD (virtual)

**1. CALL TO ORDER**

Director Long called the meeting to order at 4:02p.m.

**1A Pledge of Allegiance**

Director Garnica led everyone in reciting the Pledge of Allegiance.

**1B Directors Roll Call**

The Clerk called the roll. (Garnica, Hauss, Jackson, Kimball, Long, and Meneghin) 6 Directors were present:

**1C Public Comments**

Director Long asked if there were any comments or questions from the public. None were offered.

## **1D Approval of Agenda**

### **Motion**

Director Long asked Executive Director Emmert if there were any changes to the agenda. Mr. Emmert responded with no and Director Long then asked for a motion.

Motion to approve the agenda, Director Garnica; Second, Director Jackson. Voice vote: 6 ayes (Garnica, Hauss, Jackson, Kimball, Long, and Meneghin) none opposed. Motion carries unanimously 6/0/0.

## **2. SELECTION OF OFFICERS**

### **2A Election of Officers for Calendar Year 2026**

#### **Motion**

The Board accepted nominations and elected officers for Calendar Year 2026.

Director Garnica requested to be nominated as Vice Chair of the Board, with Director Long as Chair, and Director Kimball as Secretary/Treasurer.

Motion to approve nomination, Director Garnica; Second, Director Hauss. Voice vote: 6 ayes (Garnica, Hauss, Jackson, Kimball, Long, and Meneghin) none opposed. Motion carries unanimously 6/0/0.

## **3. UPDATES**

### **3A Director Announcements/Board Communications:**

Oral Reports from the Board.

#### **Fillmore Pumpers Association Stakeholder Director Update**

Director Jackson reported the Fillmore Pumpers Stakeholders have passed their budget and water rates will remain the same as previous calendar year.

#### **Piru Pumpers Association Stakeholder Director Update**

Director Hauss reported the Piru Pumpers' Stakeholders passed their budget and rates.

#### **Environmental Stakeholder Director Update**

Director Meneghin said Friends of the Santa Clara River and others formed a new open space advocacy group.

#### **City of Fillmore Member Director Update**

Director Garnica reported he participated in United's tour of their facilities and also mentioned Well #10 construction is currently underway.

#### **United Water Conservation District Member Director Update**

Director Kimball said United conducts quarterly tours, the Santa Clara River water recharge project is ongoing, and United's budget development process is currently in progress.

### **County of Ventura Member Director Update**

Director Long said the County had a productive week in DC regarding water and disaster recovery. Senator Padilla's bill is out regarding water. She mentioned she attended the Santa Clara River Watershed Committee meeting and expressed the need for all to get involved.

### **3B Executive Director Update Information Item**

The Executive Director provided an informational update on Agency activities since the previous Special Board of Directors meeting of October 2, 2025. Executive Director Emmert said modeling was delayed due to O-PV litigation, DBS&A will explain work items delayed at a later item. He also explained Cal. AB-1520 bill that changed the definition of water year for water conservation districts to align with SGMA reporting requirements. He said United staff will distribute groundwater statements in March 2026 for the second half of 2025. He finished his update with the mention of the plan to amend bylaws with aligning director's terms with typical terms of such agencies as the County, City, and District.

### **3C Legal Counsel Update Information Item**

Legal Counsel provided an informational update on Agency's legal issues and concerns since the previous Special Board of Directors meeting of October 2, 2025. Christine Carson explained SB 827 bill that mandates new biennial financial and ethical training for local agency officials and department heads, effective January 1, 2026.

### **3D GSP Consultant Update Information Item**

Representatives from Daniel B Stephens & Associates provided an informational update on the Agency's groundwater sustainability planning activities since the previous Special Board of Directors meeting of October 2, 2025. Directors and staff asked questions on items reviewed.

## **4. CONSENT CALENDAR**

All matters listed under the Consent Calendar are considered routine by the Board and will be enacted by one motion. There will be no separate discussion of these items unless a Board member pulls an item from the Calendar. Pulled items will be discussed and acted on separately by the Board. Members of the public who want to comment on a Consent Calendar item should do so under Public Comments. (ROLL CALL VOTE REQUIRED)

### **4A Approval of Minutes**

The Board approved the Minutes from the Special Board of Directors meeting of October 2, 2025.

**4B Approval of Warrants**

The Board approved payment of outstanding vendor invoices

United Water Conservation District	\$15,491.29
DBS&A	\$ 5,624.00
CV Strategies	\$ 1,993.75
Stillwater Sciences Inc.	\$ 44.75

Motion to approve consent calendar, Director Garnica; Second, Director Meneghin. Voice vote: 6 ayes (Garnica, Hauss, Jackson, Kimball, Long, and Meneghin) none opposed. Motion carries unanimously 6/0/0.

**4C Monthly Financial Report**

The Board received the monthly financial report for the Fillmore and Piru Basins Groundwater Sustainability Agency.

**4D Meeting Schedule for Calendar Year 2026**

The Board received the Meeting Schedule for Calendar Year 2026.

**5. MOTION ITEMS**

**5A Fiscal Year 2024-2025 Financial Report**

**Motion**

The Board received the Fiscal Year 2024-2025 Financial Report and provide comments and direction.

Motion to approve, Director Jackson; Second, Director Kimball. Voice vote: 6 ayes (Garnica, Hauss, Jackson, Kimball, Long, and Meneghin) none opposed. Motion carries unanimously 6/0/0.

**5B Receivables Report**

**Motion**

The Board received a presentation from United Water Conservation District on the Agency's receivables, efforts to collect, and options for future actions, and provided comments and direction.

Motion to approve, Director Meneghin; Second, Director Jackson. Voice vote: 6 ayes (Garnica, Hauss, Jackson, Kimball, Long, and Meneghin) none opposed. Motion carries unanimously 6/0/0.

**5C Annual Reports to California Department of Water Resources**

**Motion**

The Board received a presentation from Daniel B. Stephens and Associates summarizing the Water Year 2024-2025 Annual Reports to the California Department of Water Resources for the Fillmore subbasin and Piru subbasin and provide comments and direction. Deadline to receive comments on annual report was set to March 9, 2026.

Motion to approve, Director Jackson; Second, Director Menghin. Voice vote: 6 ayes (Garnica, Hauss, Jackson, Kimball, Long, and Meneghin) none opposed. Motion carries unanimously 6/0/0.

**5D Shallow Domestic Wells Data Collection and Vulnerability Analysis**

**Motion**

The Board received a presentation from Agency staff and Daniel B. Stephens and Associates on the Agency’s efforts to identify and gather data on shallow domestic wells that might be vulnerable to future severe or prolonged droughts and provided comments and direction.

Motion to approve, Director Garnica; Second, Director Meneghin. Voice vote: 6 ayes (Garnica, Hauss, Jackson, Kimball, Long, and Meneghin) none opposed. Motion carries unanimously 6/0/0.

**4. FUTURE ITEMS:**

- a. How will the agency implement Cal AB-1520
- b. Collections – can agency publish names of delinquent customers
- c. Schedule for budget expenditures
- d. Billing/write-offs, 5-year plan.
- e. GSP timing/schedule

**5. ADJOURNMENT:**

Director Long adjourned the meeting at 6:00 pm, to the next **Board Meeting on Thursday, March 19, 2026**, or call of the chair.

I certify that the above is a true and correct copy of the minutes of the Fillmore and Piru Basins Groundwater Sustainability Agency’s Special Board of Directors meeting of February 26, 2026.

ATTEST: \_\_\_\_\_  
Kelly Long, Chair, FPBGSA Board of Directors

ATTEST: \_\_\_\_\_  
Eva Ibarra, Clerk of the Board

# Check Detail Report

Date	Transaction type	Num	Name	Memo/Description	Cleared	Amount
<b>Citizens Business Bank</b>						
27328						
03/11/2026	Bill Payment (Check)	11309	Aleshire & Wynder LLP		Uncleared	-1,463.20
03/11/2026	Bill Payment (Check)	11309	Aleshire & Wynder LLP			-1,463.20
27329						
03/11/2026	Bill Payment (Check)	11312	United Water Conservation District		Uncleared	-29,743.54
03/11/2026	Bill Payment (Check)	11312	United Water Conservation District			-29,743.54
27330						
03/11/2026	Bill Payment (Check)	11311	Stillwater Sciences Inc.		Uncleared	-925.50
03/11/2026	Bill Payment (Check)	11311	Stillwater Sciences Inc.			-925.50
27331						
03/11/2026	Bill Payment (Check)	11310	Daniel B Stephens & Associates, Inc.		Uncleared	-1,426.00
03/11/2026	Bill Payment (Check)	11310	Daniel B Stephens & Associates, Inc.			-1,426.00



**Fillmore and Piru Basins**  
Groundwater Sustainability Agency

**ITEM NO. 3C Consent Item**

**DATE:** March 13, 2026 (for March 19, 2026, meeting)

**TO:** Board of Directors

**VIA:** Anthony A. Emmert, Executive Director

**FROM:** United Water Conservation District Finance

**SUBJECT: Monthly Financial Report**

**SUMMARY**

The Board will receive the monthly financial reports for the Fillmore and Piru Basins Groundwater Sustainability Agency (Agency).

**BACKGROUND**

United Water Conservation District accounting staff has prepared financial reports based on the Agency revenue and expenses for the month of February 2026.

**FISCAL IMPACT**

None

**ATTACHMENTS:**

Attachment A – February 28, 2026, Profit and Loss Budget Performance

Attachment B – February 28, 2026, Balance Sheet

# Fillmore and Piru Basins, GSA

Budget vs. Actuals: FY\_ 2025\_2026 - FY26 P&L

July 2025 - February 2026

	JUL - SEP, 2025		OCT - DEC, 2025		JAN - FEB, 2026		TOTAL	
	ACTUAL	BUDGET	ACTUAL	BUDGET	ACTUAL	BUDGET	ACTUAL	BUDGET
<b>Income</b>								
40001 Groundwater Extraction Charge	-9,839.67	0.00	-800.33	0.00		0.00	\$ -10,640.00	\$0.00
47000 Other Revenue							\$0.00	\$0.00
47001 Late Fees	12,128.15		9,979.13		2,829.44		\$24,936.72	\$0.00
<b>Total 47000 Other Revenue</b>	<b>12,128.15</b>		<b>9,979.13</b>		<b>2,829.44</b>		<b>\$24,936.72</b>	<b>\$0.00</b>
<b>Total Income</b>	<b>\$2,288.48</b>	<b>\$0.00</b>	<b>\$9,178.80</b>	<b>\$0.00</b>	<b>\$2,829.44</b>	<b>\$0.00</b>	<b>\$14,296.72</b>	<b>\$0.00</b>
<b>GROSS PROFIT</b>	<b>\$2,288.48</b>	<b>\$0.00</b>	<b>\$9,178.80</b>	<b>\$0.00</b>	<b>\$2,829.44</b>	<b>\$0.00</b>	<b>\$14,296.72</b>	<b>\$0.00</b>
<b>Expenses</b>								
52200 Professional Services							\$0.00	\$0.00
52240 Prof Svcs - IT Consulting	3,677.83	4,749.99		4,749.99	1,993.75	3,166.66	\$5,671.58	\$12,666.64
52250 Prof Svcs - Planning & Implementation							\$0.00	\$0.00
52252 Prof Svcs - GSP Consultant							\$0.00	\$0.00
5225A Professional Services Monitoring & Reporting							\$0.00	\$0.00
5225A - A1 Monitoring Equipment	3,798.00	999.99	62.08	999.99		666.66	\$3,860.08	\$2,666.64
5225A - A2 Routine Reporting		8,250.00		8,250.00	2,137.25	5,500.00	\$2,137.25	\$22,000.00
5225A - A3 Groundwater and Surface Water Data Gaps	2,428.64	12,500.01	10,846.33	12,500.01		8,333.34	\$13,274.97	\$33,333.36
5225A - A4 Biological Data Gaps	248.42	25,500.00	9,372.02	25,500.00	7,342.88	17,000.00	\$16,963.32	\$68,000.00
<b>Total 5225A Professional Services Monitoring &amp; Reporting</b>	<b>6,475.06</b>	<b>47,250.00</b>	<b>20,280.43</b>	<b>47,250.00</b>	<b>9,480.13</b>	<b>31,500.00</b>	<b>\$36,235.62</b>	<b>\$126,000.00</b>
5225B Prof. Services- Dom Well Vulnerability							\$0.00	\$0.00
5225B - B1 Data Gathering & Vulnerability Analysis		20,000.01	3,047.43	20,000.01	1,422.65	13,333.34	\$4,470.08	\$53,333.36
<b>Total 5225B Prof. Services- Dom Well Vulnerability</b>		<b>20,000.01</b>	<b>3,047.43</b>	<b>20,000.01</b>	<b>1,422.65</b>	<b>13,333.34</b>	<b>\$4,470.08</b>	<b>\$53,333.36</b>
5225C Prof. Services - Cienega Drought Project							\$0.00	\$0.00
5225C - C2 Planning, Design, Permitting		18,750.00		18,750.00		12,500.00	\$0.00	\$50,000.00
5225C - C3 Grant Applications		8,750.01	317.00	8,750.01		5,833.34	\$317.00	\$23,333.36
<b>Total 5225C Prof. Services - Cienega Drought Project</b>		<b>27,500.01</b>	<b>317.00</b>	<b>27,500.01</b>		<b>18,333.34</b>	<b>\$317.00</b>	<b>\$73,333.36</b>
5225D Prof. Services - GSP Updates							\$0.00	\$0.00
5225D - D1 GW & SW Modeling	6,087.16	27,500.01	40,402.54	27,500.01	30,378.19	18,333.34	\$76,867.89	\$73,333.36
5225D - D2 Periodic Performance Evals. 5-Yr		32,525.01		32,525.01	1,268.00	21,683.34	\$1,268.00	\$86,733.36
5225D - D3 GSPs Amendment	146.34	44,124.99	11,432.88	44,124.99	317.00	29,416.66	\$11,896.22	\$117,666.64
<b>Total 5225D Prof. Services - GSP Updates</b>	<b>6,233.50</b>	<b>104,150.01</b>	<b>51,835.42</b>	<b>104,150.01</b>	<b>31,963.19</b>	<b>69,433.34</b>	<b>\$90,032.11</b>	<b>\$277,733.36</b>
5225E Prof. Svcs.- General Programs Support & Dvlpmt							\$0.00	\$0.00
5225E - E1 Well Permit Review					124.15		\$124.15	\$0.00
5225E - E3 Gen. Programs Support	248.30	22,500.00	8,359.28	22,500.00	2,060.00	15,000.00	\$10,667.58	\$60,000.00
5225E - E4 Prop. 218 Process		8,750.01		8,750.01		5,833.34	\$0.00	\$23,333.36
<b>Total 5225E Prof. Svcs.- General Programs Support &amp; Dvlpmt</b>	<b>248.30</b>	<b>31,250.01</b>	<b>8,359.28</b>	<b>31,250.01</b>	<b>2,184.15</b>	<b>20,833.34</b>	<b>\$10,791.73</b>	<b>\$83,333.36</b>
<b>Total 52252 Prof Svcs - GSP Consultant</b>	<b>12,956.86</b>	<b>230,150.04</b>	<b>83,839.56</b>	<b>230,150.04</b>	<b>45,050.12</b>	<b>153,433.36</b>	<b>\$141,846.54</b>	<b>\$613,733.44</b>
<b>Total 52250 Prof Svcs - Planning &amp; Implementation</b>	<b>12,956.86</b>	<b>230,150.04</b>	<b>83,839.56</b>	<b>230,150.04</b>	<b>45,050.12</b>	<b>153,433.36</b>	<b>\$141,846.54</b>	<b>\$613,733.44</b>
52270 Prof Svcs - Accounting	2,558.03	9,624.99	30,480.16	9,624.99	6,263.12	6,416.66	\$39,301.31	\$25,666.64
52275 Prof Svcs - Admin/Clerk of Bd	854.40	3,000.00	1,789.28	3,000.00	327.64	2,000.00	\$2,971.32	\$8,000.00
52280 Prof Svcs - Executive Director	6,277.04	15,024.99	15,549.23	15,024.99	1,439.69	10,016.66	\$23,265.96	\$40,066.64
52290 Prof Svcs - Other		62.49		62.49		41.66	\$0.00	\$166.64
<b>Total 52200 Professional Services</b>	<b>26,324.16</b>	<b>262,612.50</b>	<b>131,658.23</b>	<b>262,612.50</b>	<b>55,074.32</b>	<b>175,075.00</b>	<b>\$213,056.71</b>	<b>\$700,300.00</b>
52500 Legal Fees							\$0.00	\$0.00
52501 Legal Counsel	2,405.60	7,500.00	1,512.80	7,500.00	1,463.20	5,000.00	\$5,381.60	\$20,000.00
<b>Total 52500 Legal Fees</b>	<b>2,405.60</b>	<b>7,500.00</b>	<b>1,512.80</b>	<b>7,500.00</b>	<b>1,463.20</b>	<b>5,000.00</b>	<b>\$5,381.60</b>	<b>\$20,000.00</b>
53000 Office Expenses							\$0.00	\$0.00
53010 Public Information		249.99		249.99		166.66	\$0.00	\$666.64
53020 Office Supplies	57.50	249.99	199.75	249.99	46.25	166.66	\$303.50	\$666.64
53026 Postage & Mailing	76.96	249.99	274.42	249.99	74.78	166.66	\$426.16	\$666.64
53060 Computer Software	2,538.00				19.17		\$2,557.17	\$0.00
53110 Travel & Training	32.90	249.99	61.58	249.99	34.31	166.66	\$128.79	\$666.64
<b>Total 53000 Office Expenses</b>	<b>2,705.36</b>	<b>999.96</b>	<b>535.75</b>	<b>999.96</b>	<b>174.51</b>	<b>666.64</b>	<b>\$3,415.62</b>	<b>\$2,666.56</b>
53500 Insurance							\$0.00	\$0.00
53510 Liability Insurance		0.00	2,512.42	2,611.79		0.00	\$2,512.42	\$2,611.79
<b>Total 53500 Insurance</b>		<b>0.00</b>	<b>2,512.42</b>	<b>2,611.79</b>		<b>0.00</b>	<b>\$2,512.42</b>	<b>\$2,611.79</b>
<b>Total Expenses</b>	<b>\$31,435.12</b>	<b>\$271,112.46</b>	<b>\$136,219.20</b>	<b>\$273,724.25</b>	<b>\$56,712.03</b>	<b>\$180,741.64</b>	<b>\$224,366.35</b>	<b>\$725,578.35</b>
<b>NET OPERATING INCOME</b>	<b>\$ -29,146.64</b>	<b>\$ -271,112.46</b>	<b>\$ -127,040.40</b>	<b>\$ -273,724.25</b>	<b>\$ -53,882.59</b>	<b>\$ -180,741.64</b>	<b>\$ -210,069.63</b>	<b>\$ -725,578.35</b>
<b>Other Expenses</b>								
Depreciation	2,574.99	2,574.99	2,574.99	2,574.99	1,716.66	1,716.66	\$6,866.64	\$6,866.64
<b>Total Other Expenses</b>	<b>\$2,574.99</b>	<b>\$2,574.99</b>	<b>\$2,574.99</b>	<b>\$2,574.99</b>	<b>\$1,716.66</b>	<b>\$1,716.66</b>	<b>\$6,866.64</b>	<b>\$6,866.64</b>
<b>NET OTHER INCOME</b>	<b>\$ -2,574.99</b>	<b>\$ -2,574.99</b>	<b>\$ -2,574.99</b>	<b>\$ -2,574.99</b>	<b>\$ -1,716.66</b>	<b>\$ -1,716.66</b>	<b>\$ -6,866.64</b>	<b>\$ -6,866.64</b>
<b>NET INCOME</b>	<b>\$ -31,721.63</b>	<b>\$ -273,687.45</b>	<b>\$ -129,615.39</b>	<b>\$ -276,299.24</b>	<b>\$ -55,599.25</b>	<b>\$ -182,458.30</b>	<b>\$ -216,936.27</b>	<b>\$ -732,444.99</b>

# Balance Sheet

Fillmore and Piru Basins, GSA  
As of February 28, 2026

Distribution account	Total
<b>Assets</b>	
Current Assets	
Bank Accounts	
10000 Bank of the Sierra	-3,590.50
10100 Citizens Business Bank	1,651,622.95
<b>Total for Bank Accounts</b>	<b>\$1,648,032.45</b>
Accounts Receivable	
11000 Accounts Receivable	375,996.59
<b>Total for Accounts Receivable</b>	<b>\$375,996.59</b>
Other Current Assets	
12000 Undeposited Funds	0.00
12900 Clearing Account	0.00
<b>Total for Other Current Assets</b>	<b>\$0.00</b>
<b>Total for Current Assets</b>	<b>\$2,024,029.04</b>
Fixed Assets	
Fillmore Piru Monitoring Wells (4 Wells)	\$515,000.00
Accumulated Depreciation - Monitoring Wells (4 Wells)	-27,466.56
<b>Total for Fillmore Piru Monitoring Wells (4 Wells)</b>	<b>\$487,533.44</b>
<b>Total for Fixed Assets</b>	<b>\$487,533.44</b>
<b>Total for Assets</b>	<b>\$2,511,562.48</b>
<b>Liabilities and Equity</b>	
Liabilities	
Current Liabilities	
Accounts Payable	
20000 Accounts Payable	33,558.24
<b>Total for Accounts Payable</b>	<b>\$33,558.24</b>
Other Current Liabilities	
20001 Advance from County of Ventura	0.00
California Department of Tax and Fee Administration Payable	0.00
Out Of Scope Agency Payable	0.00
<b>Total for Other Current Liabilities</b>	<b>\$0.00</b>
<b>Total for Current Liabilities</b>	<b>\$33,558.24</b>
<b>Total for Liabilities</b>	<b>\$33,558.24</b>

# Balance Sheet

Fillmore and Piru Basins, GSA

As of February 28, 2026

Distribution account	Total
Equity	
30000 Opening Balance Equity	515,000.00
32000 Retained Earnings	2,179,940.51
Net Income	-216,936.27
<b>Total for Equity</b>	<b>\$2,478,004.24</b>
<b>Total for Liabilities and Equity</b>	<b>\$2,511,562.48</b>



**Item No. 4A Motion Item**

**DATE:** March 12, 2026 (for March 19, 2026, meeting)

**TO:** Board of Directors

**VIA:** Anthony A. Emmert, Executive Director

**FROM:** United Water Conservation District Finance

**SUBJECT: Write-Off of Uncollectible Receivables**

**RECOMMENDED ACTION**

The Board will consider approving the write-off the uncollectible receivables.

**BACKGROUND**

During its February 26, 2026, meeting, the Agency Board of Directors received a report from United Water Conservation District accounting staff on the Agency’s receivables. To equitably distribute the costs of compliance with the Sustainable Groundwater Management Act, the Agency is taking numerous actions to reduce the outstanding receivables. However, some of the receivables are uncollectible. Staff has identified \$54,827 of outstanding receivables that are uncollectible, due to bankruptcies, business closures, sales of properties, etc. (see Attachment A).

Staff recommends that the Board approve the write-off of the uncollectible receivables detailed on Attachment A.

**FISCAL IMPACT**

Writing off \$54,827 of extraction charges will reduce revenue but ensure reported assets accurately reflect open receivables.

**ATTACHMENTS**

Attachment A Recommended Write-Off Summary

Proposed Motion: Approve the write-off of uncollectible receivables as detailed on Attachment A.		
1 <sup>st</sup> Director _____	2 <sup>nd</sup> Director _____	
Voice/Roll call vote:		
Director Garnica:	Director Hauss:	Director Jackson:
Director Kimball:	Director Long:	Director Meneghin:

**Fillmore and Piru Basin GSA  
Recommended Write -Off Summary**

Account No.	Well No.	Status	Balance	Notes
100-0008-01 (INACTIVE)	04N19W25J04S	Inactive	\$ 1,529.26	Customer filled bankruptcy 10/15/21, charges prior to that date are uncollectable
100-00085-00	04N19W25J06S	Active	\$ 51,989.39	Customer filled bankruptcy 10/15/21, charges prior to that date are uncollectable
100-00890-01 (INACTIVE)	04N18W30F04S	Inactive	\$ 60.96	Inactive account with old open invoices
100-01150-00 (INACTIVE)	04N18W20M04S	Inactive	\$ 396.35	Out of Business
200-00220-00	03N20W03H02S	Active	\$ 0.02	Active with minimal balance
200-00280-00 (INACTIVE)	04N19W29R01S	Inactive	\$ 800.70	Out of Business
200-00300-00 (INACTIVE)	04N19W29R06S	Inactive	\$ 11.83	Out of Business
200-00500-00 (INACTIVE)	03N20W04P01S1	Inactive	\$ 0.04	Inactive with minimal balance
200-01370-01	03N21W01P02S	Active	\$ 0.04	Parcel sold; 3 year average of 0 AF used.
200-01400-00 (INACTIVE)	04N19W32N02S	Inactive	\$ 14.10	Inactive account with old open invoices
200-01830-00 (INACTIVE)	03N20W01A03S	Inactive	\$ 0.03	Inactive with minimal balance
200-02530-00 (INACTIVE)	03N20W02A08S	Inactive	\$ 8.97	Inactive account with old open invoices
200-03261-01 (INACTIVE)	03N20W01K01S	Inactive	\$ 0.06	Inactive with minimal balance
200-02340-00 (INACTIVE)	04N19W29E01S	Inactive	\$ 12.97	Inactive account with old open invoices
200-02990-01 (INACTIVE)	03N20W02R08S	Inactive	\$ 8.02	Inactive with minimal balance
100-00910-00 (INACTIVE)	04N18W30J04S	Inactive	\$ (1.40)	Inactive account has small credit balance to Write off
200-01095-00 (INACTIVE)	03N20W08B03S	Inactive	\$ (0.72)	Inactive account has small credit balance to Write off
200-02990-00 (INACTIVE)	03N20W02R08S	Inactive	\$ (3.67)	Inactive account has small credit balance to Write off
<b>Total</b>			<b>\$ 54,826.95</b>	



**ITEM NO. 4B Motion Item**

**DATE:** March 12, 2026 (For March 19, 2026, meeting)

**TO:** Board of Directors

**FROM:** Anthony A. Emmert, Executive Director

**SUBJECT: Annual Reports to California Department of Water Resources**

**RECOMENDATION**

The Board will consider approving the Water Year 2024-2025 Annual Reports to the California Department of Water Resources for the Fillmore subbasin and the Piru subbasin.

**DISCUSSION**

The Sustainable Groundwater Management Act (SGMA) requires that groundwater sustainability agencies such as the Fillmore and Piru Basins Groundwater Sustainability Agency (Agency) produce and submit annual reports for each groundwater basin to the California Department of Water Resources (DWR) by April 1 of each year. SGMA also requires that groundwater sustainability agencies update and keep current their public databases of groundwater information. The Agency's groundwater sustainability consultant Daniel B. Stephens and Associates (DBS&A) has prepared annual reports for both the Fillmore subbasin and the Piru subbasin that conform to the requirements of SGMA and has updated the Agency's database of groundwater information. DBS&A provided the Board with an overview of the two reports during its February 26, 2026, meeting, and received recommendations from the Board and stakeholders.

Following approval by the Board, prior to April 1, 2025, the Agency will upload the reports to the DWR SGMA portal.

**FISCAL IMPACT**

None

**ATTACHMENTS**

Attachment A – Fillmore Basin Annual Report

Attachment B – Piru Basin Annual Report

Proposed Motion:

Approve the Annual Reports to the Department of Water Resources.

1<sup>st</sup> Director \_\_\_\_\_ 2<sup>nd</sup> Director \_\_\_\_\_

Voice/Roll call vote:

Director Garnica:

Director Hauss:

Director Jackson:

Director Kimball:

Director Long:

Director Meneghin:

# Fillmore Groundwater Subbasin GSP Annual Report Water Year 2025

---

Submitted to



California Department of  
Water Resources

Submitted by



Prepared by



143E Spring Hill Drive  
Grass Valley, CA 95945

[www.dbstephens.com/](http://www.dbstephens.com/)

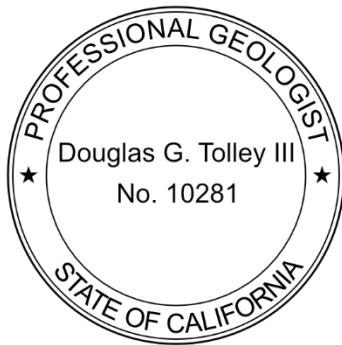
Project# DB24.1345.00

March 19, 2026

## Certification

This report was prepared in accordance with generally accepted professional hydrogeologic principles and practices. This report makes no other warranties, either expressed or implied as to the professional advice or data included in it. This report has not been prepared for use by parties or projects other than those named or described herein. It may not contain sufficient information for other parties or purposes.

**DANIEL B. STEPHENS & ASSOCIATES, INC.**



Douglas (Gus) Tolley, PhD, PG  
Project Hydrogeologist  
[gtolley@geo-logic.com](mailto:gtolley@geo-logic.com)  
143E Spring Hill Drive  
Grass Valley, CA 95945

Date signed:

# Table of Contents

Certification .....	i
1. Introduction .....	1
2. Groundwater Elevations .....	2
3. Groundwater Extractions .....	2
4. Surface Water Supply .....	3
5. Total Water Use .....	4
6. Change in Groundwater Storage .....	4
7. Progress Towards GSP Implementation .....	5
7.1 Project #1: Supporting the Cienega Springs Restoration Project as a Drought Refuge .....	5
7.2 Project #7: Subsidence Infrastructure Vulnerability .....	5
7.3 Groundwater Model Updates .....	6
7.4 DMS Maintenance .....	6
8. References .....	6

## List of Tables

Table 1. Groundwater Extractions

Table 2. Surface Water Use

Table 3. Total Water Use

## List of Figures

Figure 1. Location Map

Figure 2. Spring Water Levels Contour Map

Figure 3. Fall Water Levels Contour Map

Figure 4. Agricultural Groundwater Extractions

Figure 5. Domestic, Municipal, and Industrial Groundwater Extractions

Figure 6. Total Groundwater Extractions

Figure 7. Change in Groundwater in Storage

Figure 8. Groundwater Pumping and Change in Groundwater Storage

## List of Appendices

Appendix A - Representative Monitoring Point (RMP) Hydrographs

## Acronyms and Abbreviations

<u>Acronym/Abbreviation</u>	<u>Definition</u>
AF	acre-feet
AFY	acre-feet per year
Ag	agriculture
amsl	above mean sea level
Basin	Fillmore subbasin of the Santa Clara River Valley basin
CCR	California Code of Regulations
CIMIS	California Irrigation Management Information System
DBS&A	Daniel B. Stephens & Associates, Inc.
DWR	[CA] Department of Water Resources
FPBGSA	Fillmore and Piru Basins Groundwater Sustainability Agency
FT	feet
GSA	Groundwater Sustainability Agency
GSP	Groundwater Sustainability Plan
MO	Measurable Objective
MT	Minimum Threshold
RMP	Representative Monitoring Point
SGMA	Sustainable Groundwater Management Act
SMC	Sustainable Management Criteria
SWRCB	State Water Resources Control Board
United	United Water Conservation District
WLE	water level elevation
WY	water year

## Executive Summary

Water year (WY) 2025 was a dry year for the Fillmore subbasin. Precipitation measured at the CIMIS Moorpark station (#217) was 11.76 in, or about 59% of the annual average of 19.96 in from WY 2017-2024. Groundwater levels in the subbasin decreased by an average of 7.79 ft from October 2024 to October 2025. Groundwater in storage decreased by an estimated 13,949 acre-ft (AF). Groundwater extractions and surface water diversions were estimated to be 49,149 AF and 2 AF, respectively, totaling 49,151 AF of water used beneficially in the basin during WY 2025. GSP implementation activities that keep the subbasin at established sustainability goals have continued. These include ongoing research into improving monitoring networks for groundwater dependent ecosystems (GDEs) and groundwater-surface-water (GW-SW) interactions; consideration and discussions of updates to the well permit application review workflow; and maintenance of the database management system (DMS).

## 1. Introduction

The Fillmore Subbasin (the Basin) is managed with the adjacent Piru Subbasin by the Fillmore and Piru Basins Groundwater Sustainability Agency (the Agency). Following the submittal of the Fillmore Subbasin Groundwater Sustainability Plan (GSP) on January 31st, 2022, the Agency is required to submit an annual report for the preceding Water Year (October 1st through September 30th) to DWR by April 1st (23 CCR §356.2). These annual reports provide a summary of hydrologic conditions and water use in the Basin (Figure 1) using observed data from monitoring networks and/or estimated using best available methods. This annual report provides a summary of Basin water use and changes in groundwater storage during the period from October 1, 2024 to September 30th, 2025, and provides context for Basin conditions relative to the sustainable management criteria developed for the Basin. This report has been prepared in accordance with the requirements for annual reports as identified in the Sustainable Groundwater Management Act (SGMA). More detailed analysis and discussion of long-term hydrologic trends will be included in the periodic evaluation of the GSP the Agency is required to perform at least every five years (23 CCR §356.4).

For additional clarification or more detailed information on the basin plan area or conditions, please refer to the Fillmore Subbasin GSP. As acknowledged by the Department of Water Resources, it is important to note that there are still some data gaps and missing information as the Agency continues to gather information for better analysis and decisions.

## 2. Groundwater Elevations

Groundwater elevation contour maps for the spring and fall of 2025 are shown in Figure 2 and Figure 3, respectively. These maps depict the seasonal high (spring) and low (fall) water level elevations in the Basin. Spring and fall water level elevations are defined as observations within a 120-day period centered on April 1st or October 1st. If a well has multiple observations within this period, then the value collected nearest to April 1st or October 1st is used. The Basin is conceptualized as a single aquifer, and therefore subsetting water level data by well screen depth was not required.

Observed spring groundwater elevations (Figure 2) ranged from 267.55 to 699.20 ft above mean sea level (amsl), with an average elevation of 376.84 ft amsl. Fall groundwater elevations (Figure 3) ranged from 255.94 to 445.03 ft amsl, with an average elevation of 352.63 ft amsl. Flow is generally from east to west, but is influenced by recharge along the margins of the valley and drawdown in the vicinity of high-capacity irrigation wells. Observed groundwater elevation changes from Fall 2024 to Fall 2025 ranged from -29.31 to -0.80 ft, with an average change of -7.79 ft.

Hydrographs with SMCs for representative monitoring points (RMPs) in the Basin are shown in Appendix A. Hydrographs for all wells can be accessed via the [FPBGSA DMS](#).

## 3. Groundwater Extractions

Groundwater pumpers that produce groundwater from the Basin pay United Water Conservation District (UWCD) an extraction fee based on the number of acre-ft they pump. Prior to 2022, this was reported on a 6-month basis (reporting to UWCD twice per calendar year). Period 1 covers January through June, and period 2 covers July through December of each year. A description of the historical groundwater extraction monitoring in Fillmore Basin is provided in Section 3.5.1.4 of the Fillmore Subbasin GSP. To better comply with SGMA reporting requirements, the Agency is requesting growers voluntarily report groundwater extractions on a quarterly (3-month) basis.

Groundwater pumpers are required to self-report groundwater extractions by well to UWCD using one of three methods: domestic multiplier, electrical meter (based on Southern California Edison efficiency testing), or water flow meter. For non-reporters, an estimate from historical usage is entered in the groundwater production database for accounting and basin volume

calculation purposes. For wells with water meters, reporting typically involves filing out a form and submitting an accompanying photograph of the digital totalizer reading. The extent to which “smart meters” or automated (advanced) metering infrastructure (AMI) technology is used by individual well owners to quantify their groundwater production is unknown in the Fillmore Basin. There is not currently a mechanism by which well owners can automatically report groundwater production from their water meters to UWCD or the Agency. De minimis domestic pumping can be reported to UWCD using a multiplier of 0.2 AF per person in a household per 6-month period with a minimum of 0.5 AF (e.g., if there are 1 or 2 people reporting domestic usage on a well, then 0.5 AF minimum is assessed). De minimis pumpers (extractors) that have a meter on their well discharge have the option of calculating their usage based on the meter reading which may show less than 0.5 AF usage, and are billed based on actual usage.

Estimated groundwater extractions for WY 2025 grouped by water use sector and measurement method are shown in Table 1. Pumping from October through December 2024 was estimated for wells that did not report quarterly by scaling the reported volumes from period 2 of that year by the fraction of reference ET from the Moorpark CIMIS station that occurred during that time. Using this method, an estimated 1,039 AF (35%) of 2024 period 2 (July - December) groundwater pumping occurred during WY 2025. Due to the timing of the 6-month measurement and billing cycle described above, only voluntarily reported quarterly extractions during period 2 (July - December) of 2025 were available at the time this annual report was developed. Voluntarily reported extractions for July through September 2025 were estimated to represent approximately 99% of total extractions during that period using the complete 2025 period 1 (January - June) data set for reference. The difference between the reported and estimated total extraction volume was assigned to wells that did not voluntarily report using proportions obtained from the complete 2025 period 1 (January - June) data set.

Groundwater pumping aggregated within each public land survey (PLSS) section (1 mi<sup>2</sup>) shows the spatial distribution of agricultural (Figure 5), domestic, municipal & industrial (Figure 6), and total (Figure 7) groundwater extractions within the Basin. Groundwater pumping totaled approximately 49,149 AF, with agricultural beneficial uses accounting for about 95% of total groundwater extractions for WY 2025.

## 4. Surface Water Supply

Surface water used in the Basin grouped by source and measurement method is summarized in Table 2. All surface water diversions are used beneficially for agricultural irrigation. Not all

diversions for WY 2025 were reported to the State Water Resources Control Board (SWRCB) at the time this report was written. Total reported surface water use in the Basin during WY 2025 was 1.5 AF.

## 5. Total Water Use

Total water use in the Basin grouped by water use sector and measurement method is shown in Table 3. Total water volume used in the Basin during WY 2025 was estimated to be 49,151 AF.

## 6. Change in Groundwater Storage

Change in groundwater storage for WY 2025 was estimated using differences in water level elevations from Fall 2024 to Fall 2025. Observed differences in water levels were interpolated to a 65x65 ft (20x20 m) grid using the universal kriging method. Volume was calculated by multiplying the area of each cell by the estimated change in water level and vertically integrated aquifer storage coefficient for each respective cell. The vertically integrated aquifer storage coefficients were calculated as the thickness weighted average of each model grid cell in the UWCD groundwater model, and ranged from 0.08 to 0.14. The total change in storage for the Basin was calculated by summing the estimated change in volume for all cells and then multiplying by a scaling factor of 1.49. The scaling factor accounts for the interpolation area not covering the entire area where pumping is known to occur in the Basin due to the location of, and data availability from, monitoring wells. It is defined as the ratio of the area within the groundwater basin boundary area and a half-mile radius of each production well to the water level change interpolation area. This assumes that water level changes in areas of the basin with no observations are similar to those with observations.

A map of the change in storage for WY 2025 with contour lines showing water level differences is shown in Figure 8. Estimated total change in storage for WY 2025 is -13,949 AF. Figure 9 shows annual groundwater pumping and change in storage, along with cumulative storage since WY 2000. Current storage condition relative to WY 1988 is -45,399 AF. Negative change in storage is expected due to critically dry conditions for WY 2025.

## 7. Progress Towards GSP Implementation

The Fillmore Subbasin GSP provided seven Projects or Management Actions that the FPBGSA Board of Directors would implement or consider implementing to facilitate the maintenance of sustainable conditions in the basin (see Section 4 of the GSP). The FPBGSA completed Projects #2 and #3 in WY 2022, and have continued work on Projects #1 and #7. The remaining Project or Management Actions (Projects #4 - #6 detailed in the GSP) have yet to be discussed by the FPBGSA Board of Directors. These projects or management actions will be considered by the Board of Directors over the next year and it is anticipated that more substantive updates will be included in future Annual Reports. Below is a description of activities related to each project that occurred during WY 2025.

### 7.1 Project #1: Supporting the Cienega Springs Restoration Project as a Drought Refuge

A program team with expertise in GDE ecology (Stillwater Sciences, The Nature Conservancy, UCSB, Santa Clara River Conservancy), and hydrogeology (DBS&A, UWCD) was formed early in WY 2024. The team met several times to flesh out the general project concept (e.g., start as pilot project with limited footprint, tentative identification of land parcel potentially suitable for pilot program). An eco-subgroup of the program team was formed to focus on ecological considerations such as how many acres of land should be included in pilot program, ecological rationale(s) for triggers to start-stop supplemental water deliveries, how much supplemental water should be delivered, and timing of supplemental water deliveries. Potential existing wells that could be used as a supplemental water source for a pilot program were also identified. The program team developed a general implementation timeline through FY2026-2027 that was presented at the December 2024 FPBGSA board of director's meeting.

### 7.2 Project #7: Subsidence Infrastructure Vulnerability

The project team has consulted with DWR representatives regarding the technical approach for evaluating infrastructure vulnerability in the basin. A revised subsidence vulnerability technical memorandum is in progress and incorporates suggestions from DWR consultations and their Recommended Corrective Actions (RCAs). The technical approach is in general agreement with the Final Land Subsidence Best Management Practices (BMP) guidance for basins that have not historically experienced subsidence. The Technical Memorandum expands upon previous versions by identifying industry standards for differential settlement for a variety of major infrastructure types that can be used to help provide rationale for establishing Minimum

Thresholds. A key component in the vulnerability assessment is the use of the updated groundwater flow model (see Section 7.3 Groundwater Model Updates) to forecast whether future groundwater levels (including the effects of climate change) are expected to fall below the historic levels that could establish conditions conducive for the initiation of subsidence. The technical memorandum will be included as part of the Periodic Evaluation documentation.

### 7.3 Groundwater Model Updates

In preparation for the required five-year GSP evaluation, updates to the groundwater model are in progress. The most significant change is a more refined grid that can better capture interactions between groundwater and surface water at the reach scale. The historical simulation period has also been extended through calendar year 2023. Details will be provided in a separate technical memorandum when updates are completed in 2026.

### 7.4 DMS Maintenance

The FPBGSA has continued to maintain and update the Fillmore and Piru DMS (<https://fillmore-piru.gladata.com>), which provides stakeholders access to all available groundwater data in the subbasin using a user-friendly, map-based web interface. Groundwater levels are typically uploaded bi-annually, coincident with the July 1 and December 31 reporting dates set by DWR. Water quality and well production data are uploaded annually, coincident with GSP annual report preparation.

## 8. References

- DBS&A. 2021. Fillmore and Piru Basins Land Subsidence Evaluation. Technical Memo.  
<https://bit.ly/3mQTPTb>
- DBS&A. 2022. Fillmore Groundwater Subbasin Annual Report WY2021. Technical Report.  
<https://sgma.water.ca.gov/portal/service/gspar/document/894>
- DBS&A. 2023. Fillmore and Piru Basins Subsidence Update (FINAL). Technical Memorandum.  
<https://bit.ly/3lbFkJ8>
- DBS&A. 2023b. Fillmore Groundwater Subbasin Annual Report WY2022. Technical Report.  
<https://sgma.water.ca.gov/portal/service/gspar/document/2061>

- DBS&A. 2024. Fillmore Groundwater Subbasin Annual Report WY2023. Technical Report. <https://sgma.water.ca.gov/portal/service/gspar/document/2950>
- DBS&A. 2025. Fillmore Groundwater Subbasin Annual Report WY2024. Technical Report. <https://sgma.water.ca.gov/portal/service/gspar/document/4542>
- Fillmore and Piru Basins Groundwater Sustainability Agency. 2024. Groundwater Sustainability Plan: Fillmore Basin (Revised). <https://www.fpbgsa.org/fillmore-draft-gsp/>
- Racz, A.J., A.T. Fisher, C.M. Schmidt, B.S. Lockwood, M. Los Huertos. 2011. Spatial and Temporal Infiltration Dynamics During Managed Aquifer Recharge. Groundwater. September 2011. [https://websites.pmc.ucsc.edu/~afisher/CVpubs/pubs/Racz2011\\_GW-MAR.pdf](https://websites.pmc.ucsc.edu/~afisher/CVpubs/pubs/Racz2011_GW-MAR.pdf)
- Schmidt, C.M., A.T. Fisher, A.J. Racz, B.S. Lockwood, M. Los Huertos. 2011. Linking Denitrification and Infiltration Rates during Managed Groundwater Recharge. Environmental Science & Technology. September 13, 2011. [https://websites.pmc.ucsc.edu/~afisher/CVpubs/pubs/Schmidt2011\\_EST.pdf](https://websites.pmc.ucsc.edu/~afisher/CVpubs/pubs/Schmidt2011_EST.pdf)
- United Water Conservation District. 2021. Ventura Regional Groundwater Flow Model Expansion and Updated Hydrogeologic Conceptual Model for the Piru, Fillmore, and Santa Paula Groundwater Basins, Open-File Report 2021-01. Appendix E of the Groundwater Sustainability Plan: Fillmore Basin (Final). <https://bit.ly/3JCOx6l>

## Tables

**Table 2. Groundwater Extractions**

Sector	Method	GW Extraction Volume (AF)	Accuracy (%)	Range (AF)
Agriculture	Electrical Efficiency	14,307	± 20	11,446 - 17,169
	Water Meter	32,222	± 5	30,610 - 33,833
Agriculture Subtotal		46,529		42,056 - 51,002
Domestic, Municipal and Industrial	Domestic	92	± 20	74 - 110
	Electrical Efficiency	67	± 20	54 - 81
	Water Meter	2,461	± 5	2,338 - 2,584
Domestic, Municipal and Industrial Subtotal		2,620		2,466 - 2,775
<b>Total</b>		<b>49,149</b>		<b>44,522 - 53,777</b>

**Table 1. Surface Water Use**

Source	Method	Annual Volume Used (AF)	Accuracy (%)	Range (AF)
Local Supplies	Unknown	1.5 <sup>1</sup>	± 33	1 - 2
<b>Total</b>		<b>1.5<sup>1</sup></b>		<b>1 - 2</b>

<sup>1</sup>Surface water diversions from APPL\_IDs S023158, S022539, and S014594 were not reported to the CalWATRS database at the time this report was written.

**Table 3. Total Water Use**

Sector	Method	Total Annual Volume (AF)	Accuracy (%)	Range (AF)
Agriculture	Electrical Efficiency	14,307	± 20	11,446 - 17,169
	Unknown	1.5	± 33 %	1 - 2
	Water Meter	32,222	± 5	30,610 - 33,833
Agriculture Subtotal		46,531		42,057 - 51,004
Domestic, Municipal and Industrial	Domestic	92	± 20	74 - 110
	Electrical Efficiency	67	± 20	54 - 81
	Water Meter	2,461	± 5	2,338 - 2,584
Domestic, Municipal and Industrial Subtotal		2,620		2,466 - 2,775
<b>Total<sup>1</sup></b>		<b>49,151</b>		<b>44,523 - 53,779</b>

<sup>1</sup> Surface water diversions from APPL\_IDs S023158, S022539, and S014594 were not reported to the CalWATRS database at the time this report was written and therefore not included.

## Figures

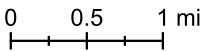
C:\Users\5001\OneDrive - Geo-Logic Associates, Inc\Project Files\Fillmore-Piru\Annual Reports\Fillmore\WY2025\GIS\QZs\Fillmore Annual



Source: <https://gis.water.ca.gov>

Explanation

-  Groundwater Basin Boundary
-  City

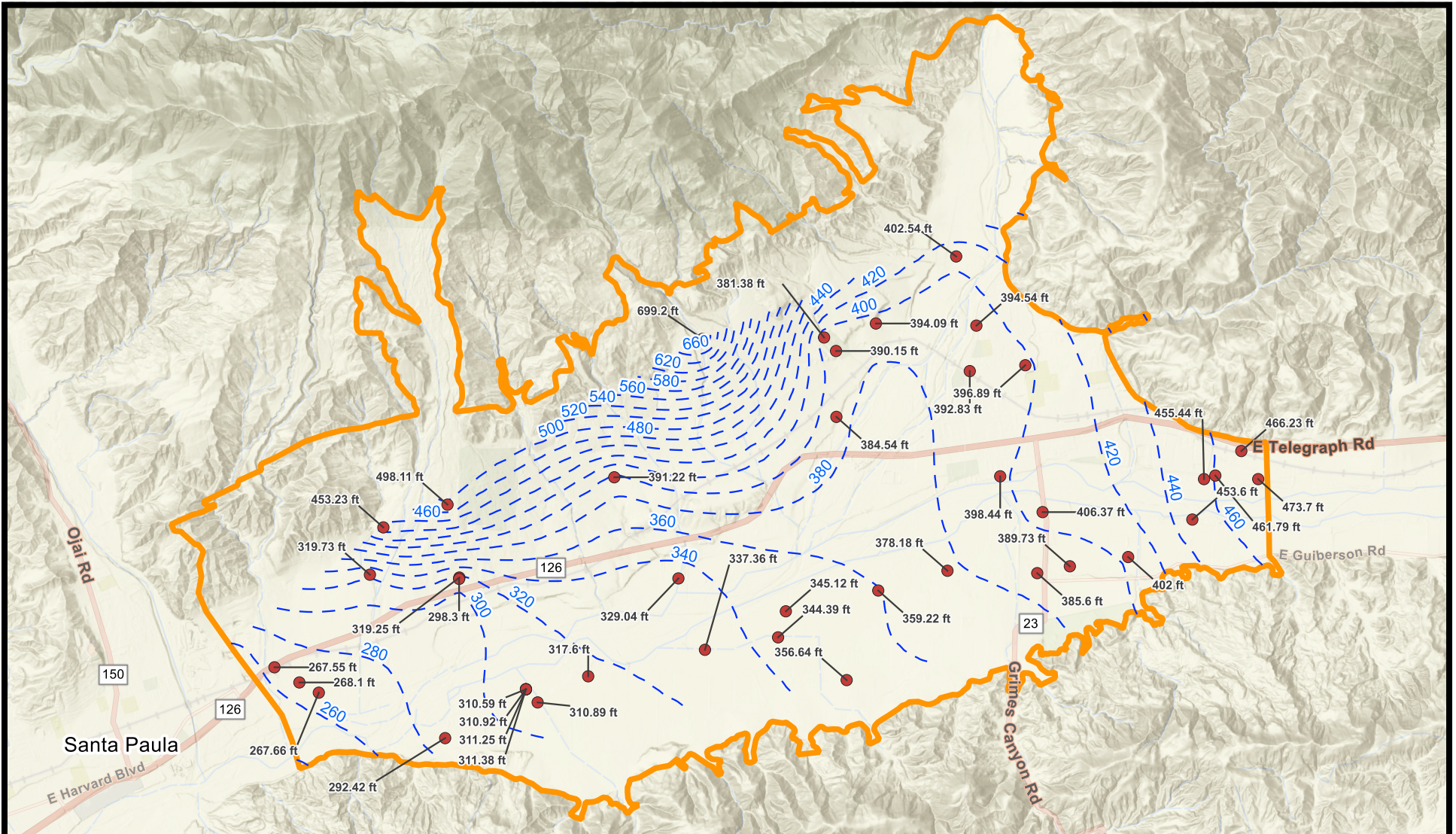


FILLMORE SUBBASIN ANNUAL REPORT  
**Location Map**



03/12/2026  
 DB24.1345.00

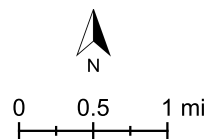
Figure 1



Source: <https://fillmore-piru.gladata.com/>

Explanation

- Groundwater Elevation (ft amsl)
- Groundwater Basin Boundary
- - - Water Level Contour (ft amsl)

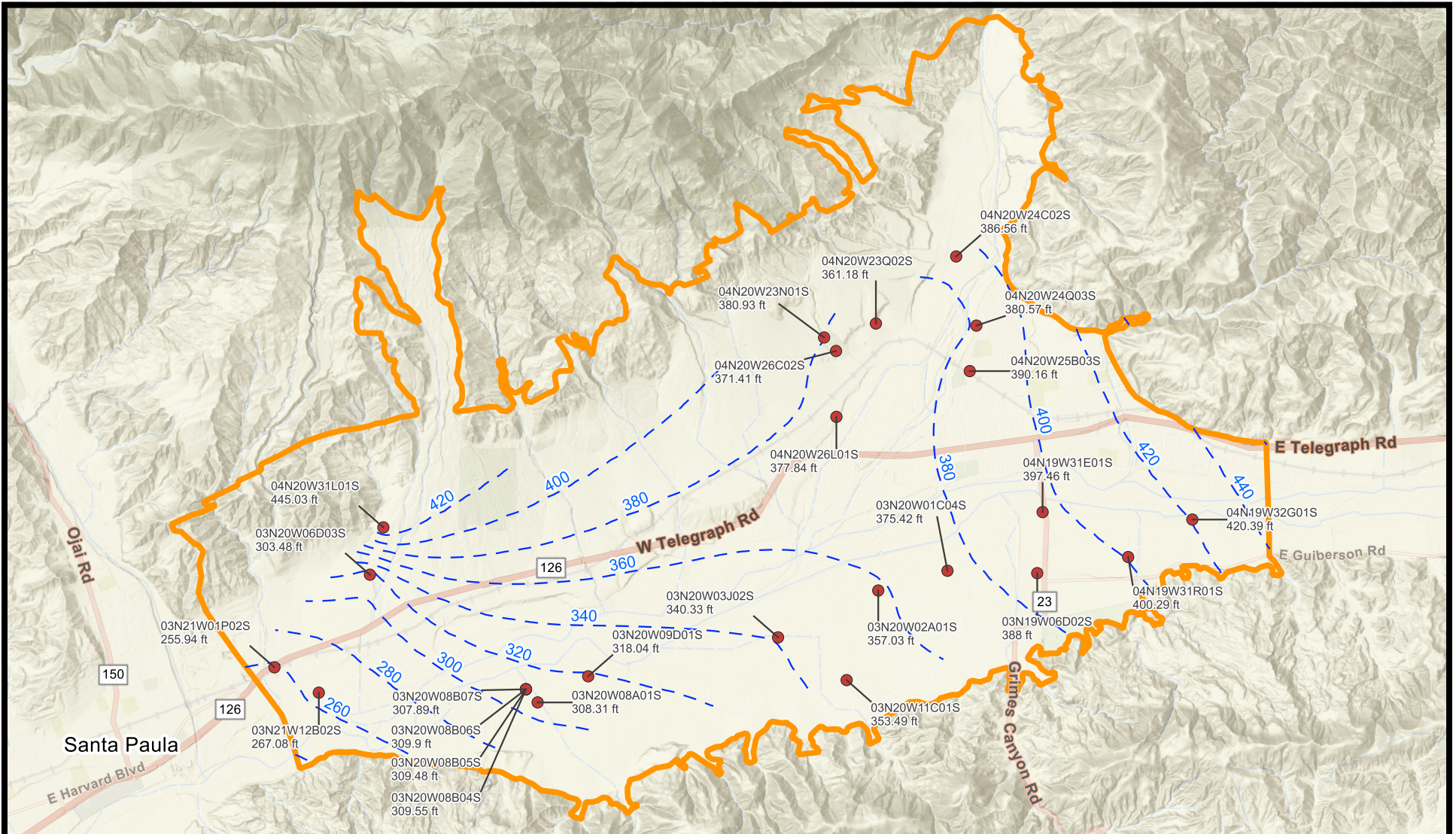


FILLMORE SUBBASIN ANNUAL REPORT  
**Groundwater Elevation Contours**  
**Spring 2025**



03/12/2026  
 a Geo-Logic Company  
 DB24.1345.00

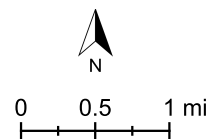
Figure 2



Source: <https://fillmore-piru.gladata.com/>

Explanation

- Well Name
- - - Groundwater Elevation (ft amsl)
- Groundwater Basin Boundary
- - - Water Level Contour (ft amsl)

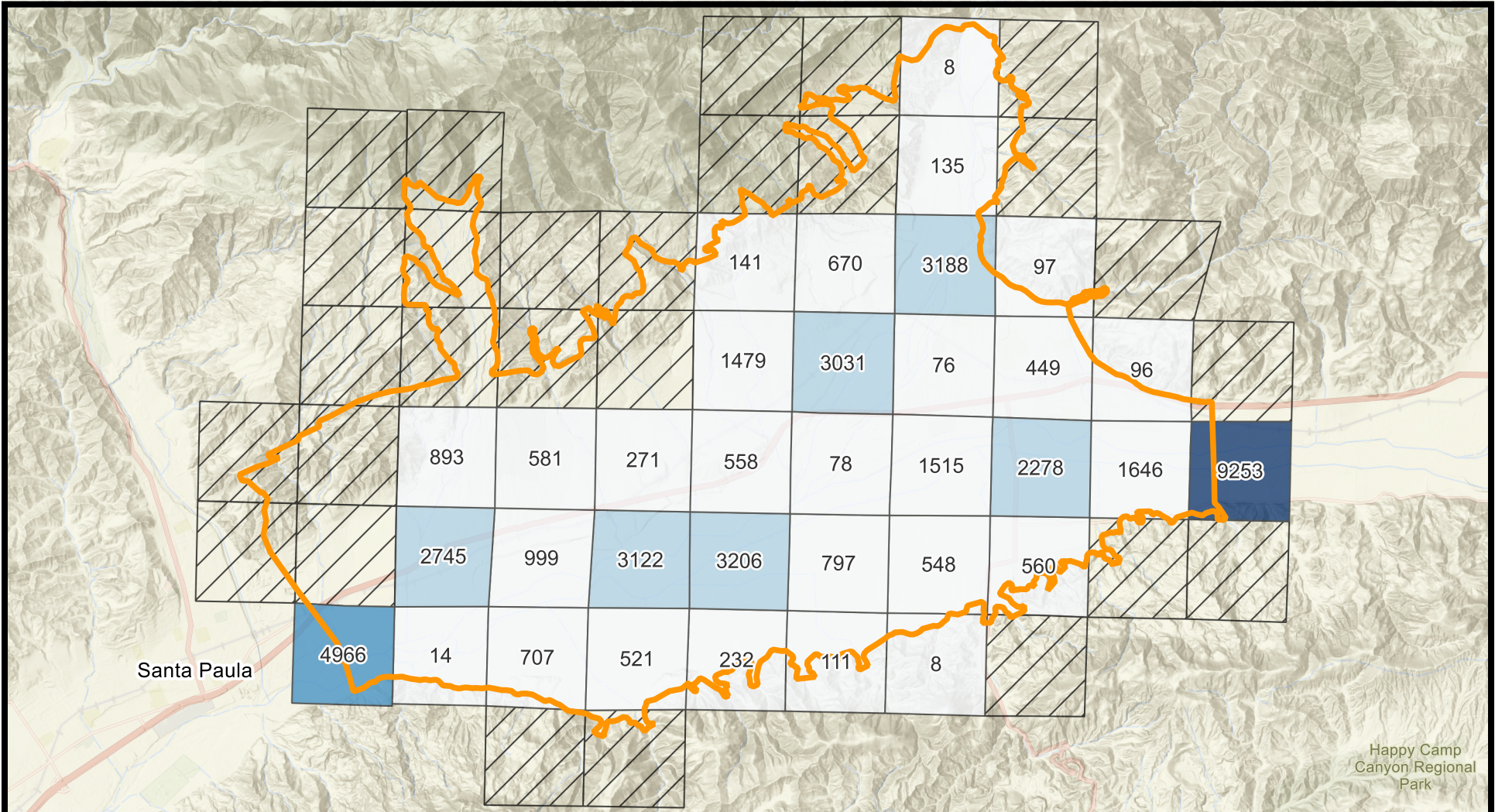


FILLMORE SUBBASIN ANNUAL REPORT  
**Groundwater Elevation Contours**  
**Fall 2025**



03/12/2026  
 DB24.1345.00

Figure 3



Source: <https://fillmore-piru.gladata.com>

**Explanation**

- Extraction Volume (AF)
  - 4,000 - 6,000
  - > 6,000
  - 2,000 - 4,000
  - 0 - 2,000
  - No Extractions
  - Groundwater Basin Boundary

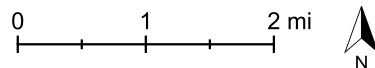
**Notes:**

1. Estimated extraction volumes aggregated by public land survey system section.
2. Labels indicate estimated extraction volume in acre-ft (AF).
3. Agricultural groundwater extractions totaled 46,529 AF.



FILLMORE SUBBASIN ANNUAL REPORT

**Estimated Groundwater Extractions WY 2025**  
**Agricultural**

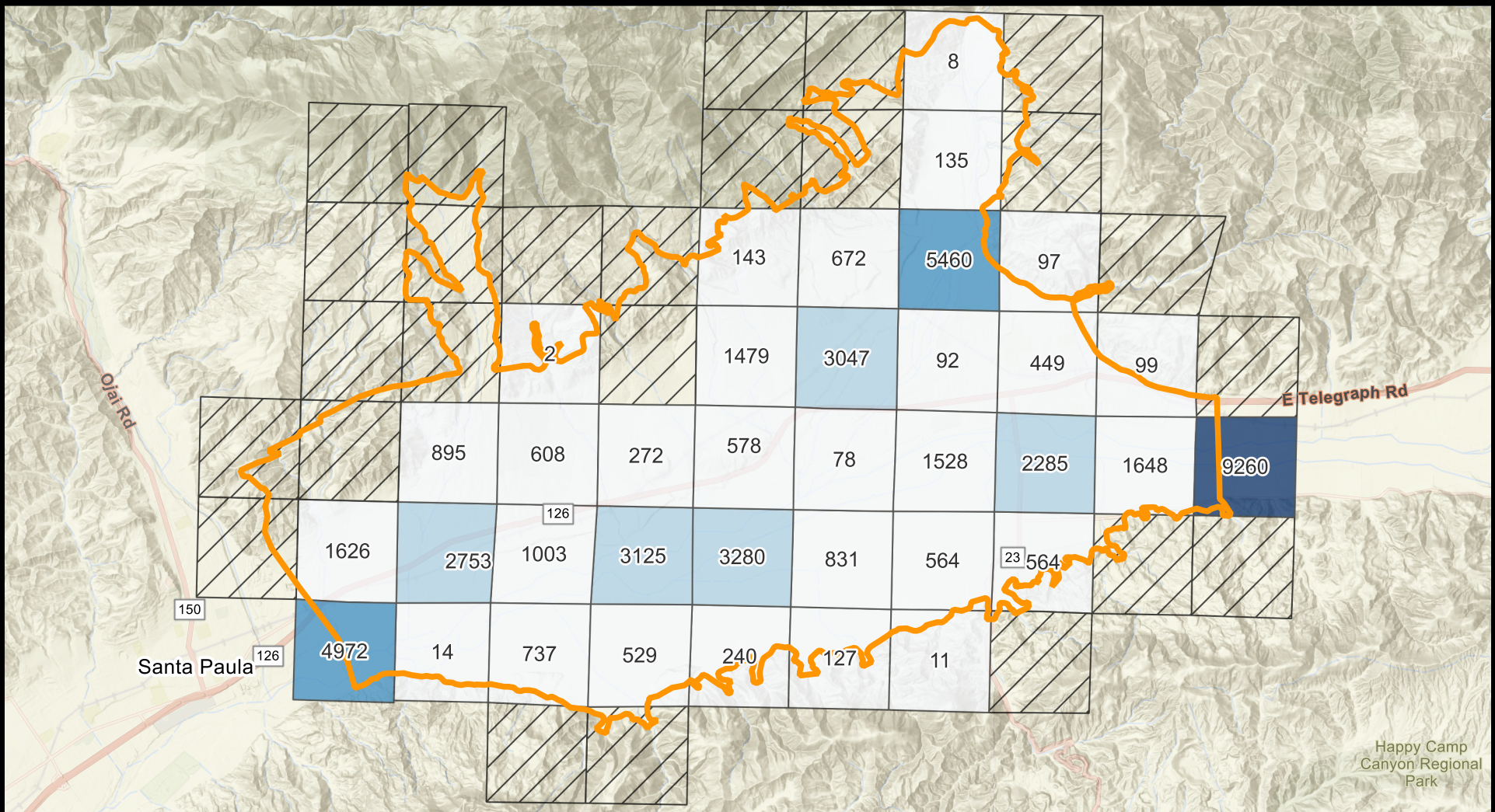


03/12/2026

a Geo-Logic Company  
DB24.1345.00

Figure 4





Source: <https://fillmore-piru.gladata.com>

**Explanation**

- Extraction Volume (AF)
  - 4,000 - 6,000
  - > 6,000
  - 0 - 2,000
  - 2,000 - 4,000
  - Groundwater Basin Boundary
  - No Extractions

**Notes:**

1. Estimated extraction volumes aggregated by public land survey system section.
2. Labels indicate estimated extraction volume in acre-ft (AF).
3. Fillmore subbasin groundwater extractions totaled 49,149 AF.



FILLMORE SUBBASIN ANNUAL REPORT

**Estimated Groundwater Extractions WY 2025**

**Total**



03/12/2026 DB24.1345.00

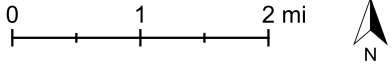
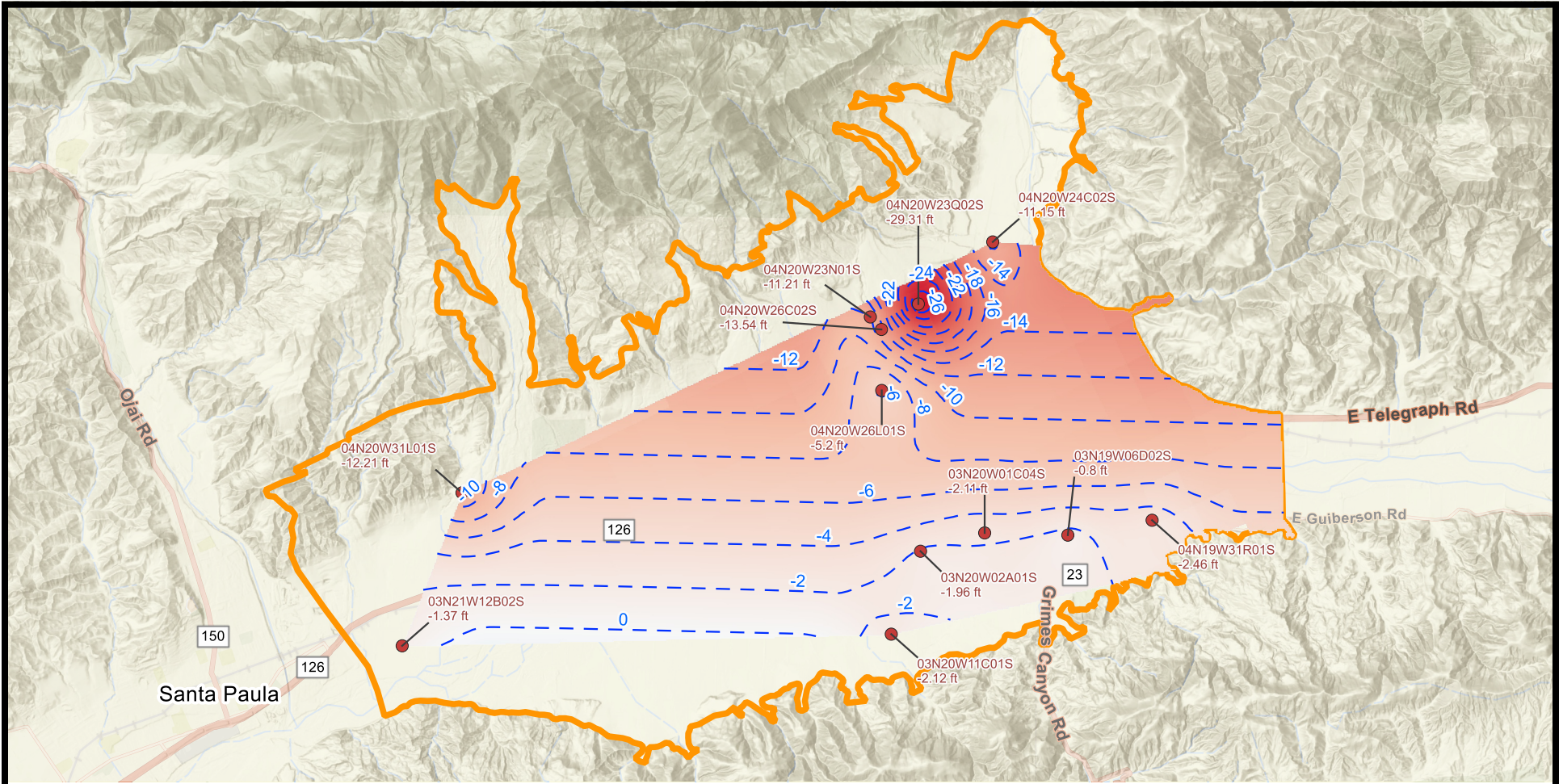


Figure 6



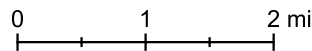
Source: <https://fillmore-piru.gladata.com>

**Explanation**

- Estimated Groundwater Storage Change (AF)
  - +0.3
  - 0.3
- Well Name
- Change in Water Level (ft)
- Water Level Elevation Change Contour (ft)
- Groundwater Basin Boundary

**Notes:**

1. Storage change estimated by interpolating changes in observed water levels to a 65 x 65 ft grid and multiplying by the vertically integrated aquifer storage coefficient for each grid cell.
2. Vertically integrated aquifer storage coefficient calculated as the thickness weighted average of aquifer storage coefficients for each model layer used in the United groundwater model.
3. Estimated WY 2025 total groundwater storage change is -13,949 AF.



a Geo-Logic Company  
DB24.1345.00

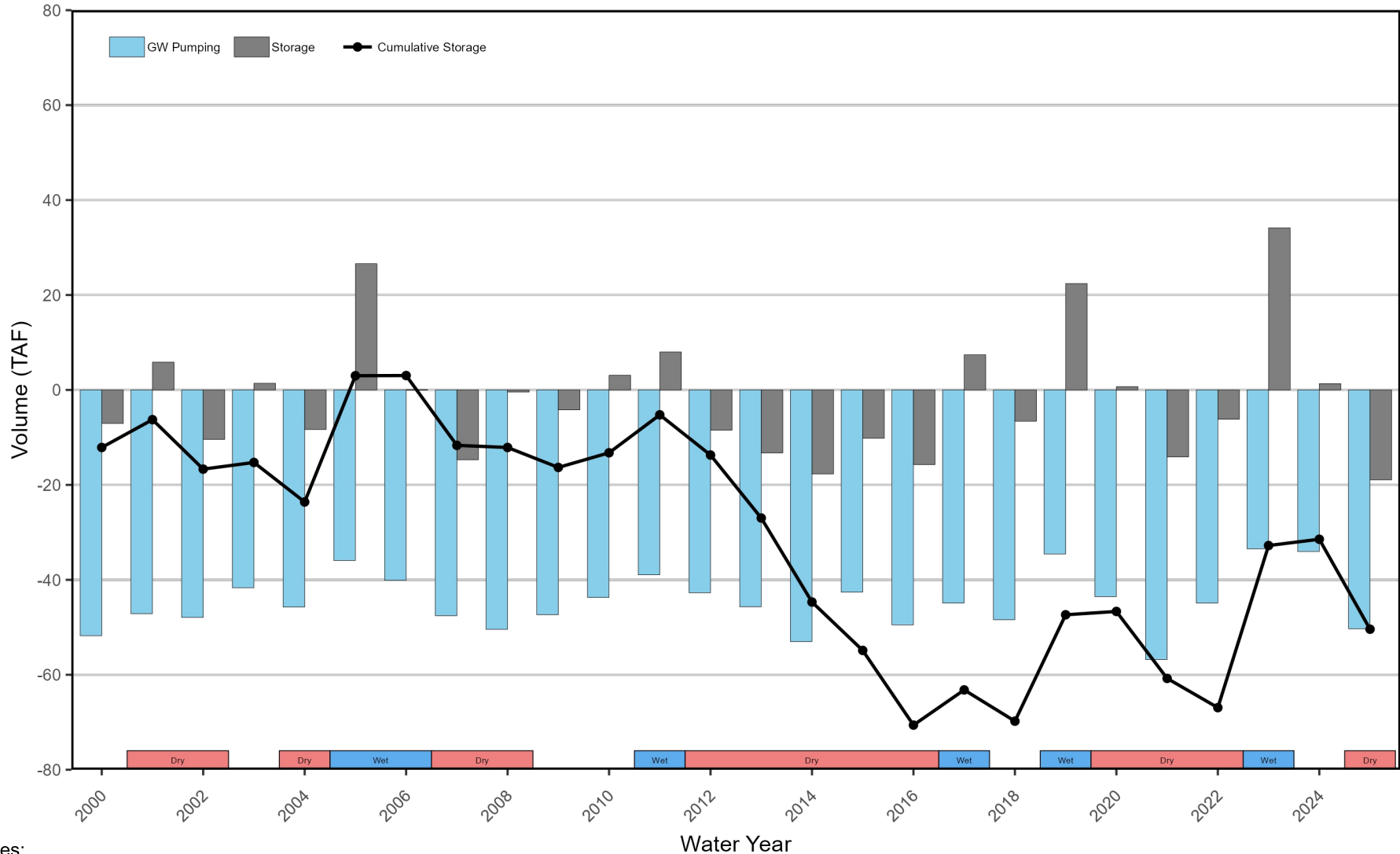
03/12/2026



FILLMORE SUBBASIN ANNUAL REPORT  
**Estimated Change in Groundwater in Storage  
WY 2025**

Figure 7

# Annual Groundwater Pumping and Change in Storage



- Notes:
1. Negative GW pumping values indicate extractions from groundwater aquifer.
  2. Positive storage values indicate increasing groundwater levels.
  3. Change in storage volumes estimated from water level data for WY 2020-2025.
  4. Red and blue colored bars at bottom of graph indicate dry/critical and wet water year types, respectively, from San Joaquin Valley Water Year Hydrologic Classification Indices.

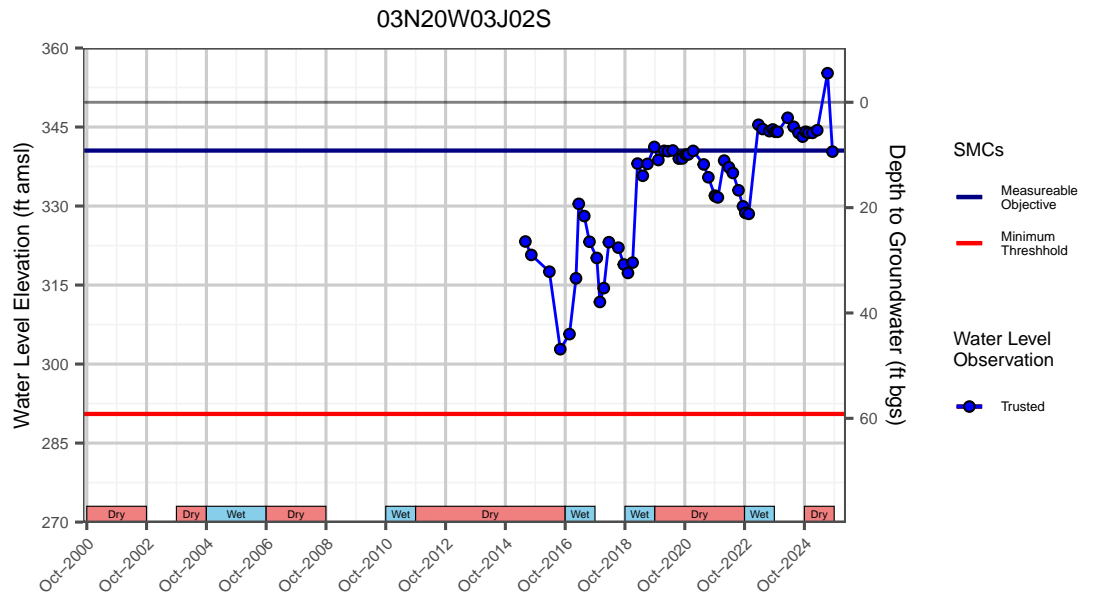
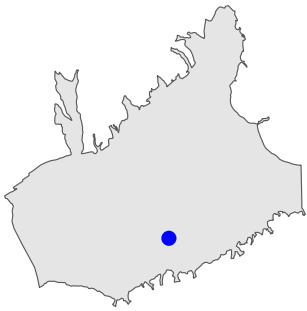
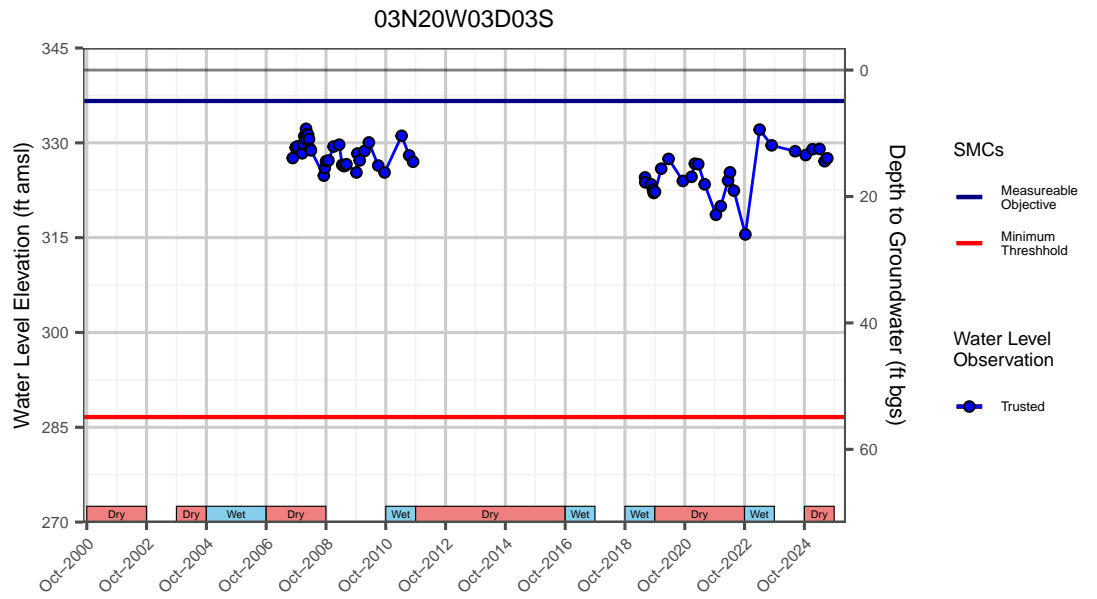
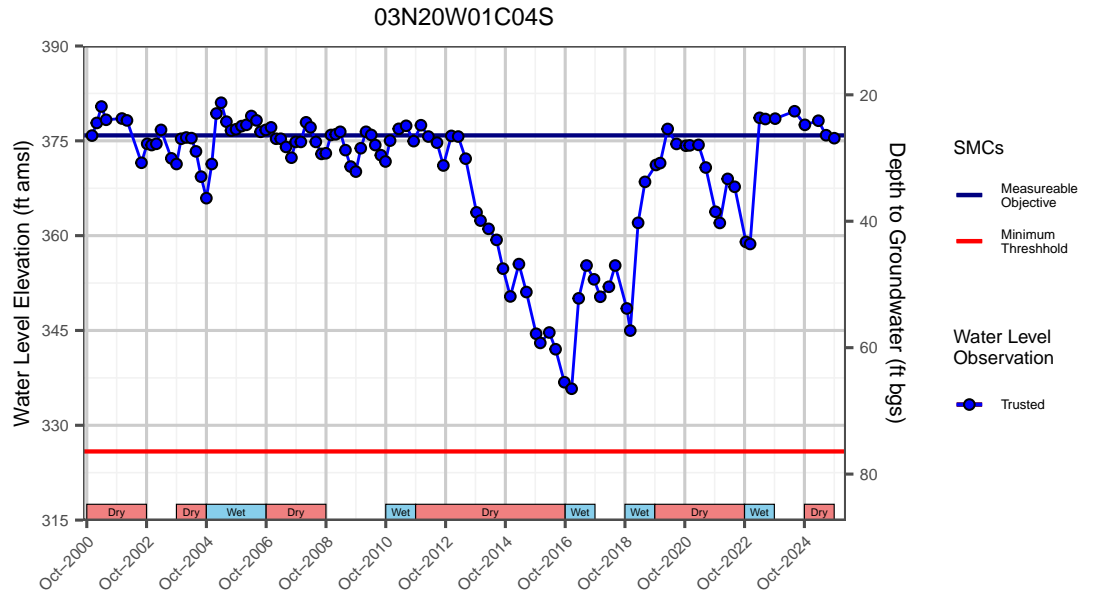


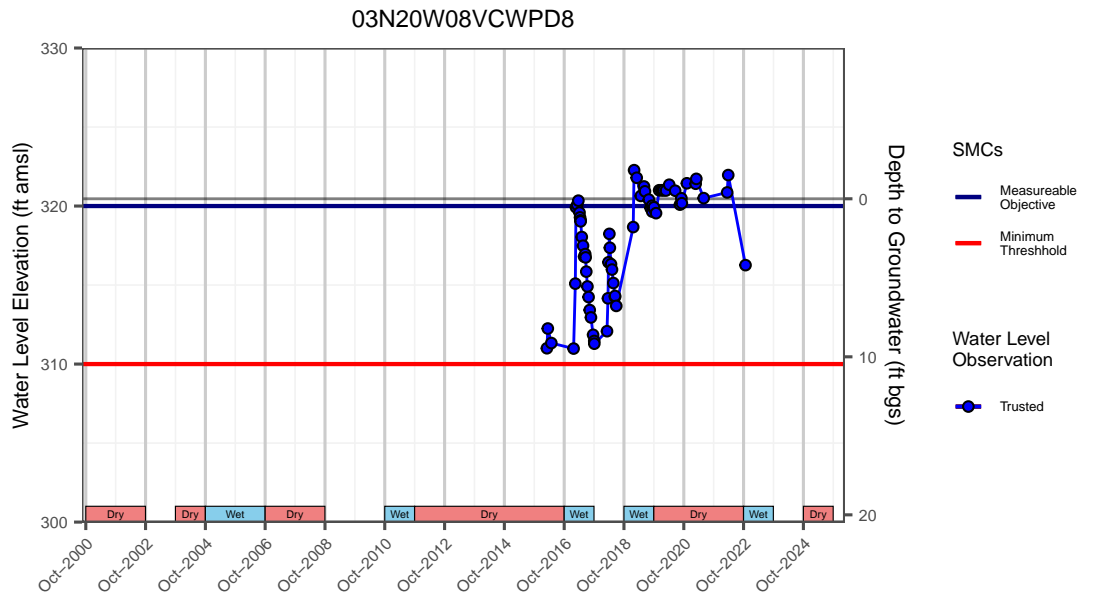
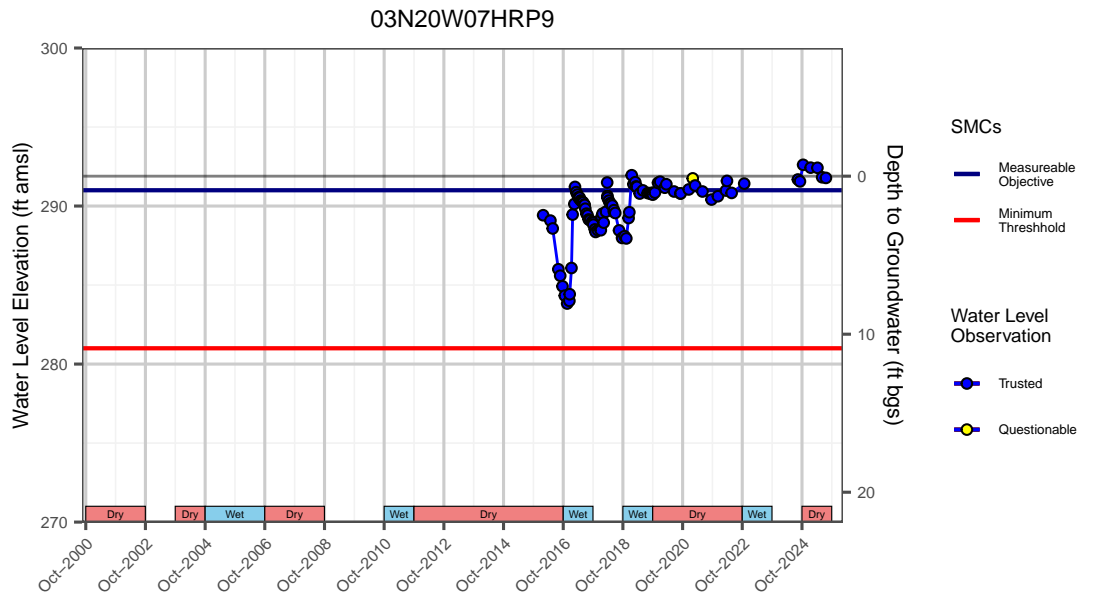
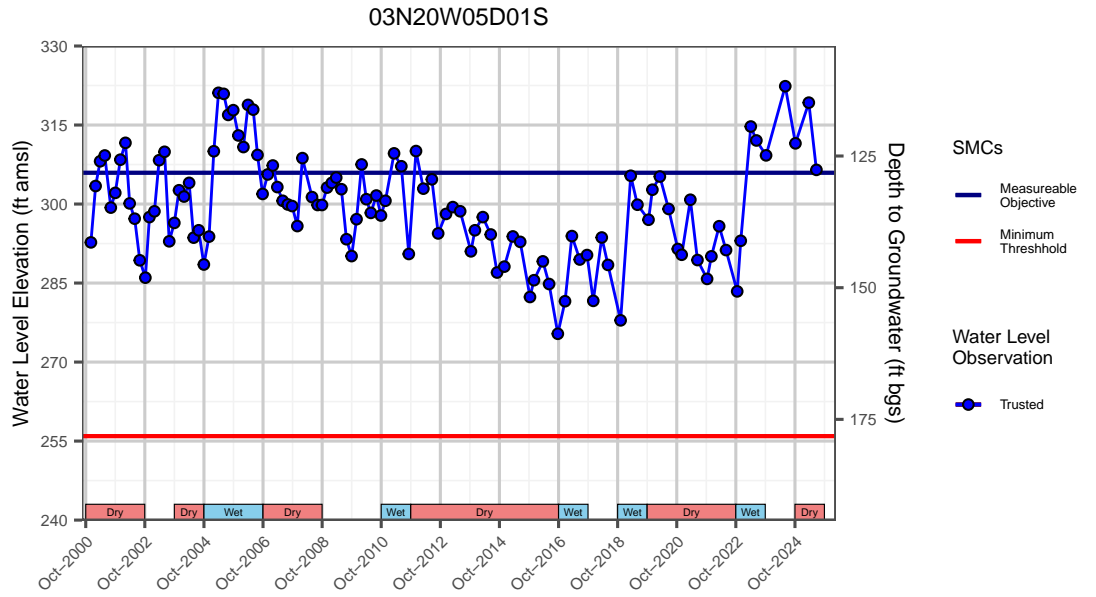
FILLMORE SUBBASIN ANNUAL REPORT  
**Groundwater Pumping and Change in Storage**  
**WY 2000-2025**

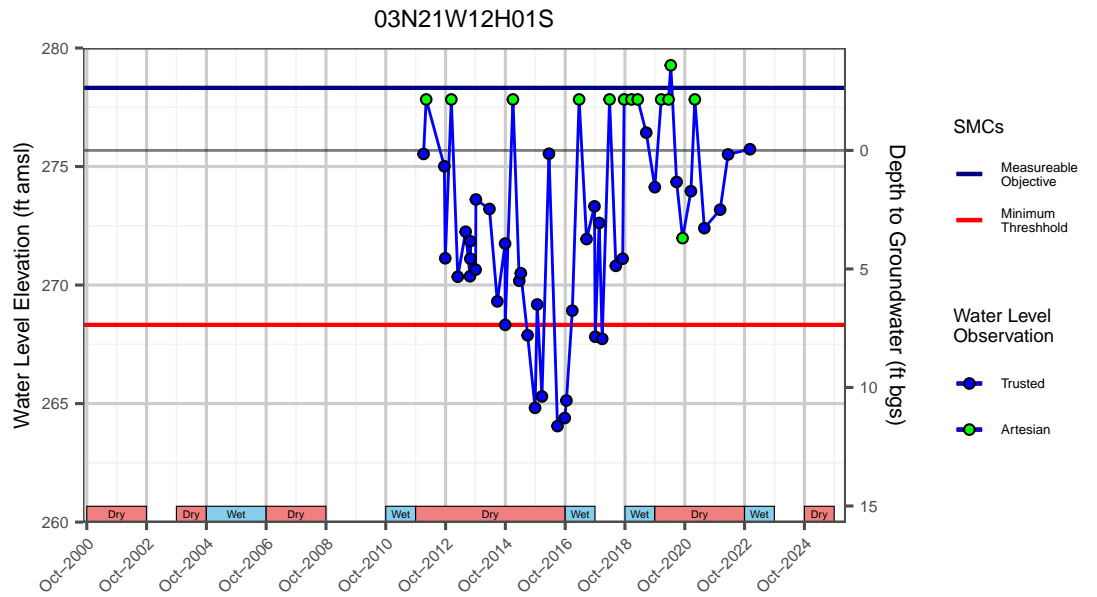
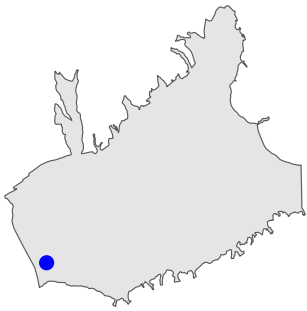
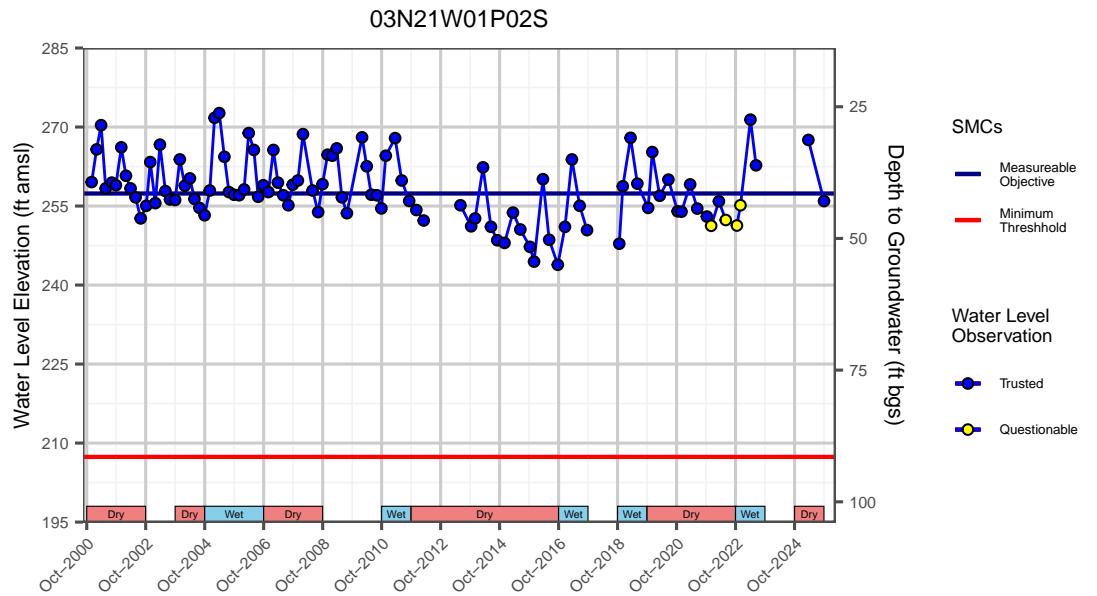
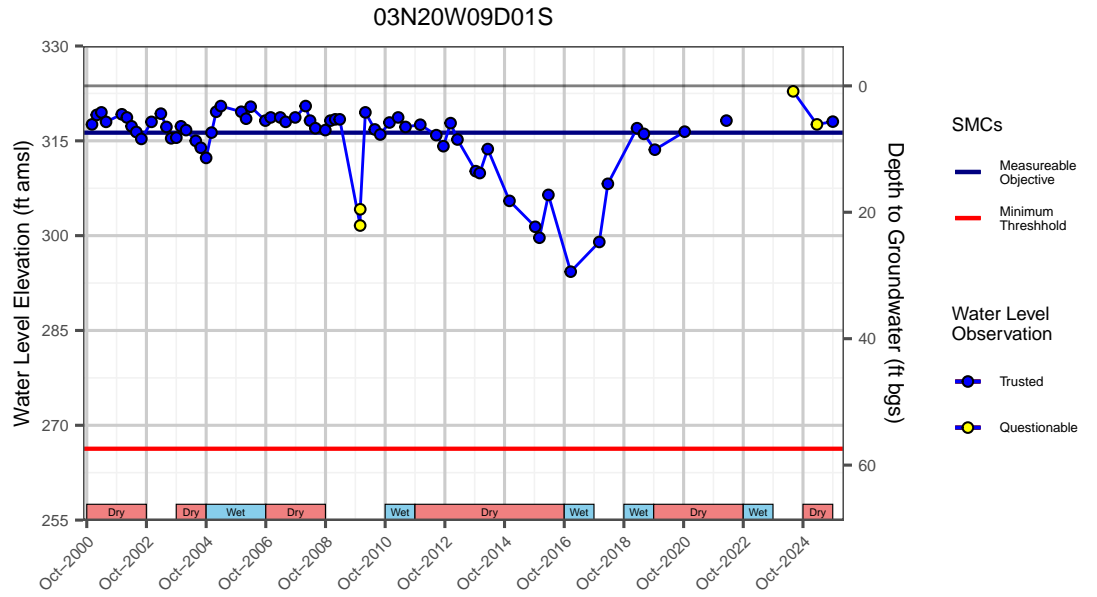
C:\Users\5001\OneDrive - Geo-Logic Associates Inc\Project Files\Fillmore-Piru\Annual Reports\Fillmore\WY2025\GIS\QZs\Fillmore Annual Report WY2025.qgz

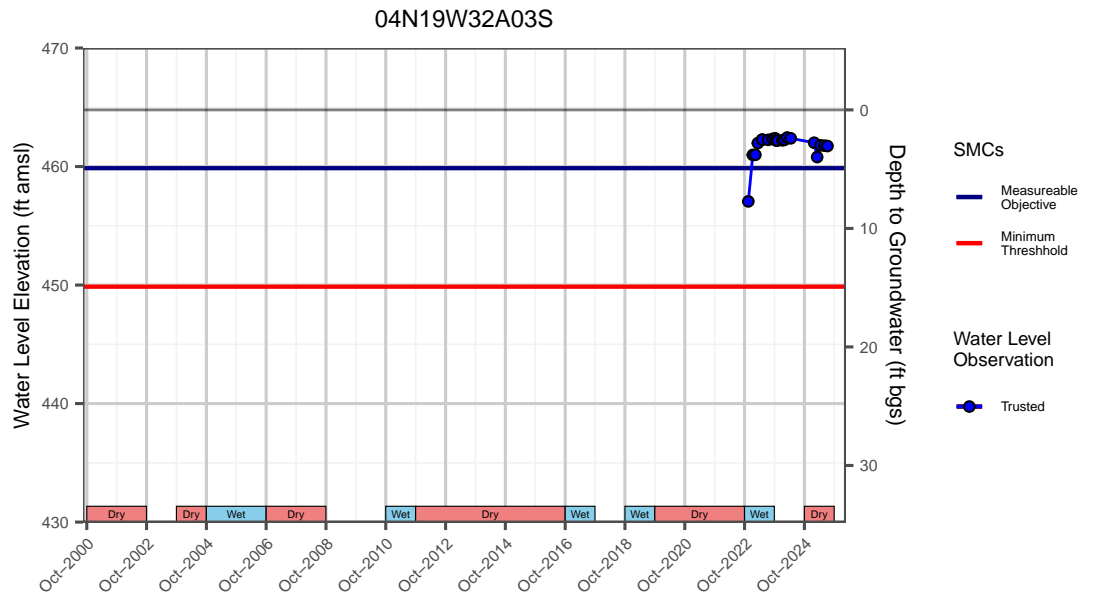
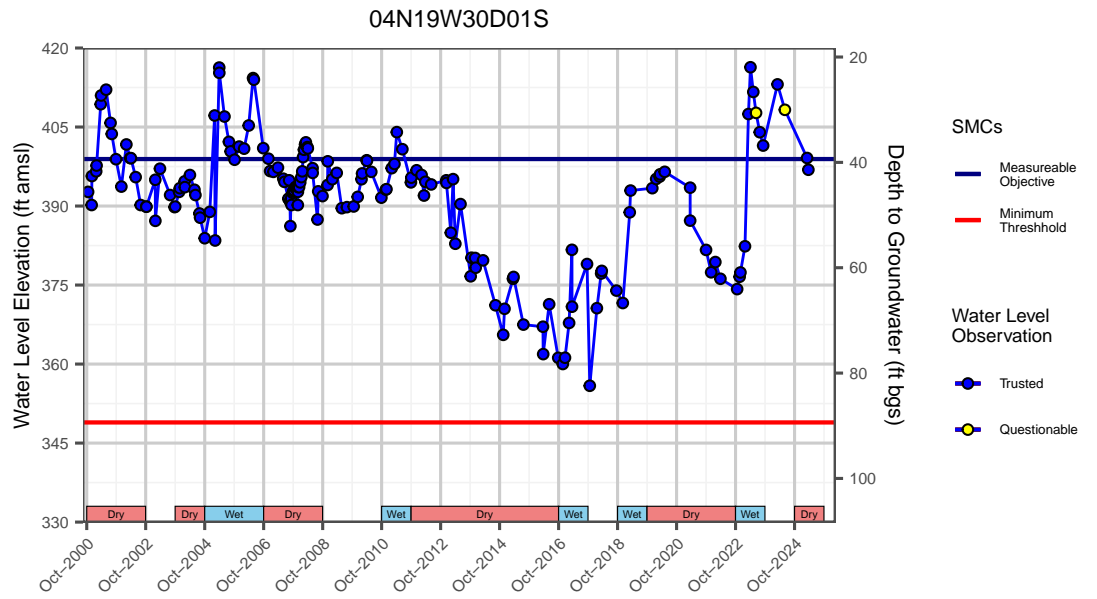
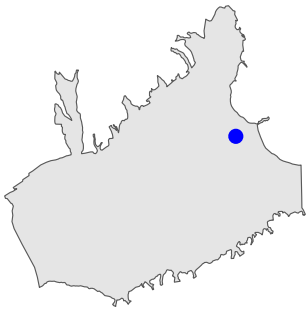
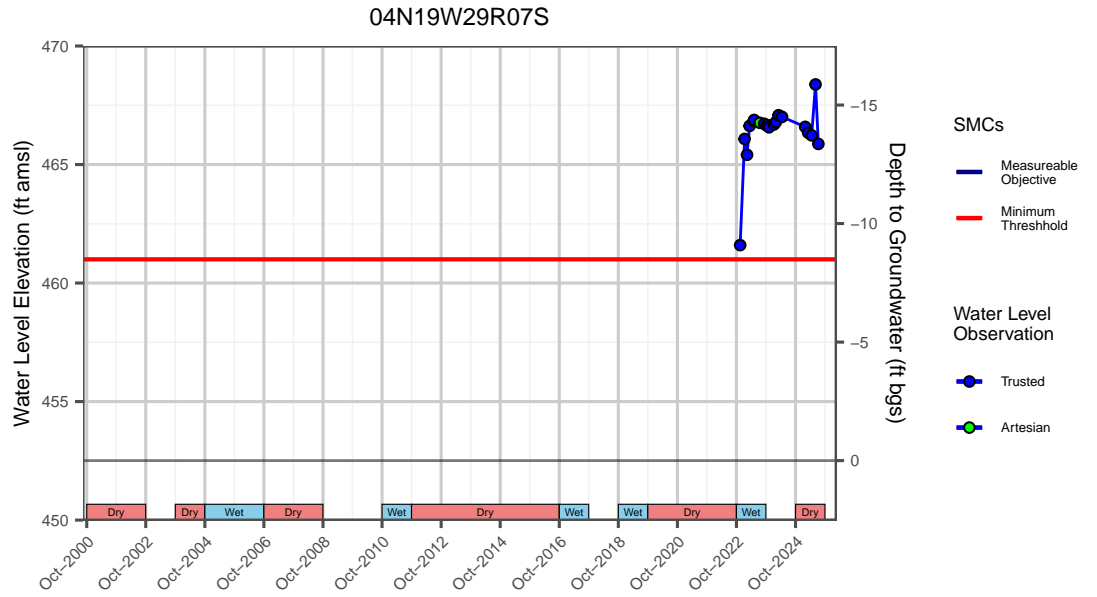
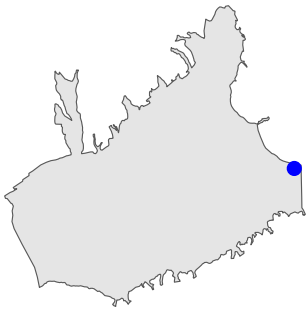
# Appendix A

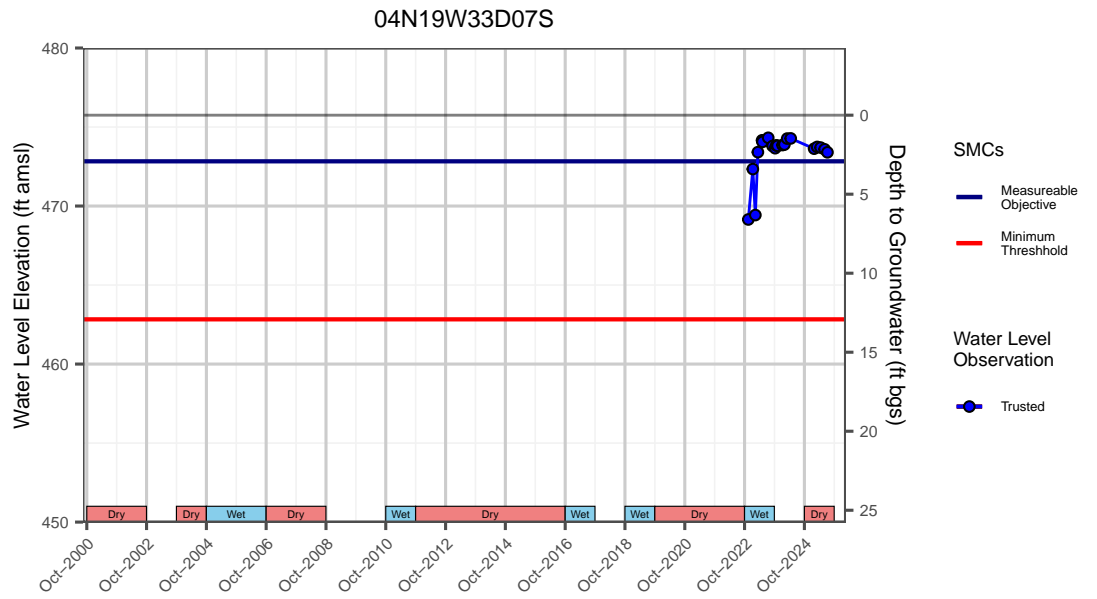
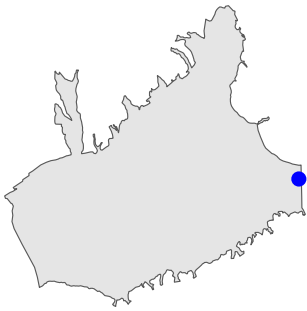
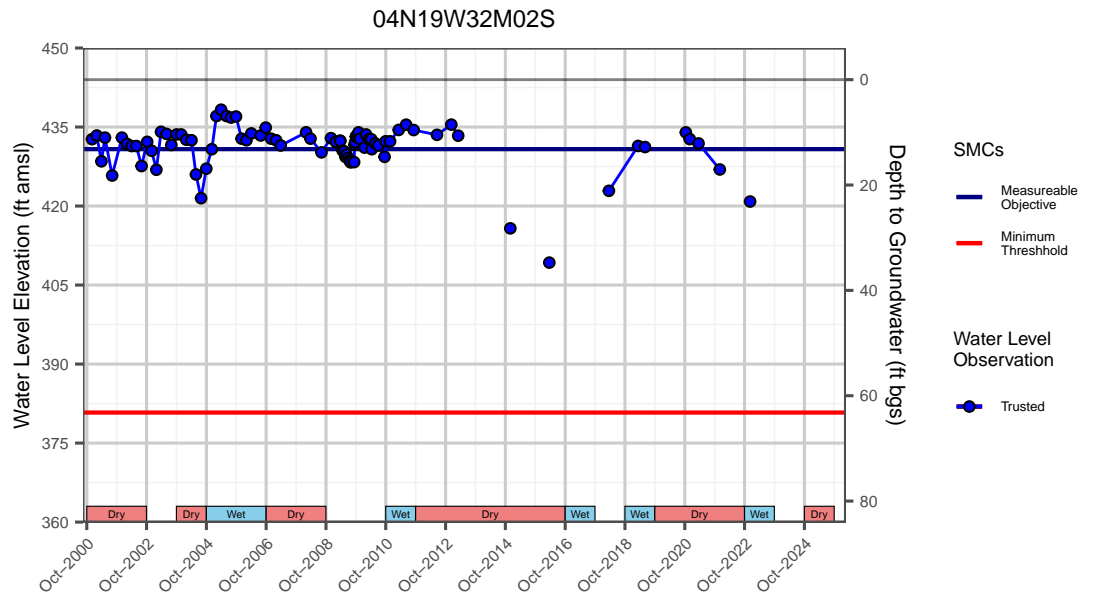
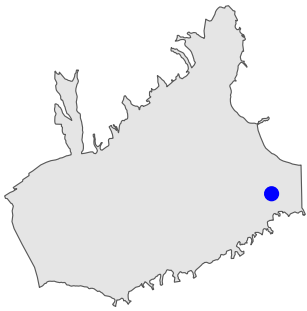
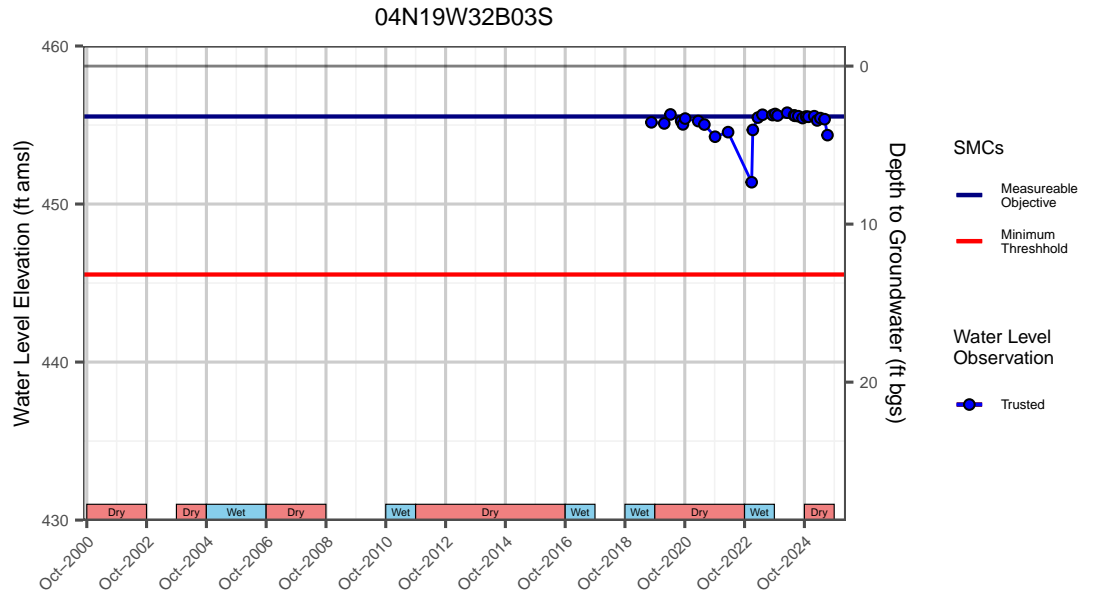
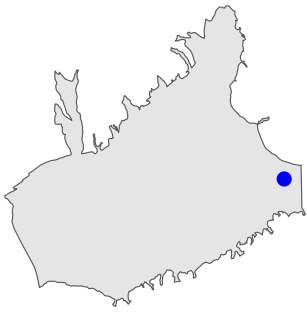
## Representative Monitoring Point Hydrographs

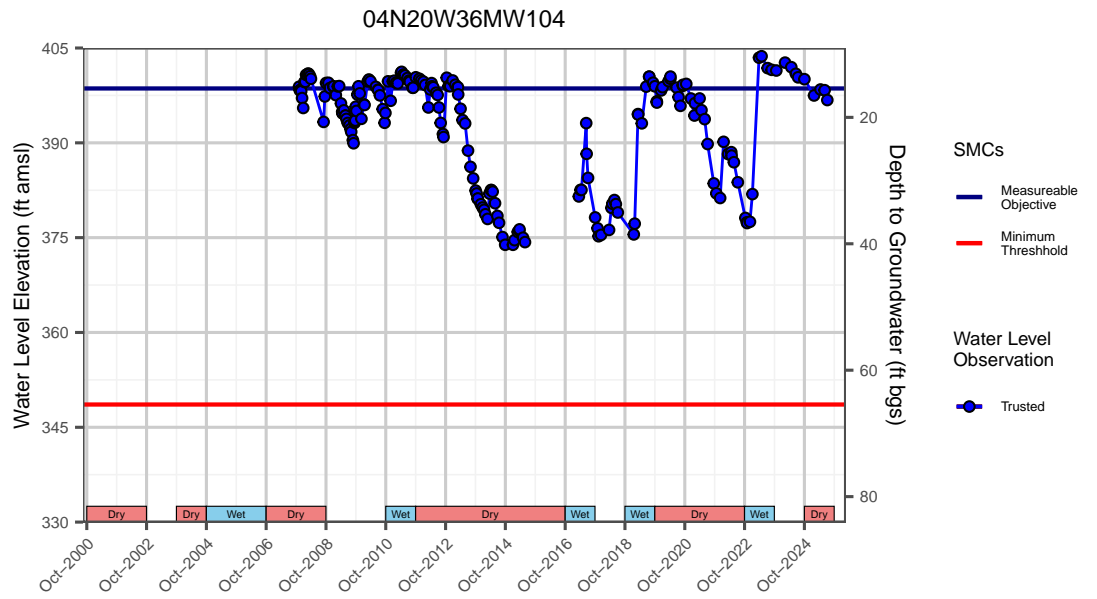
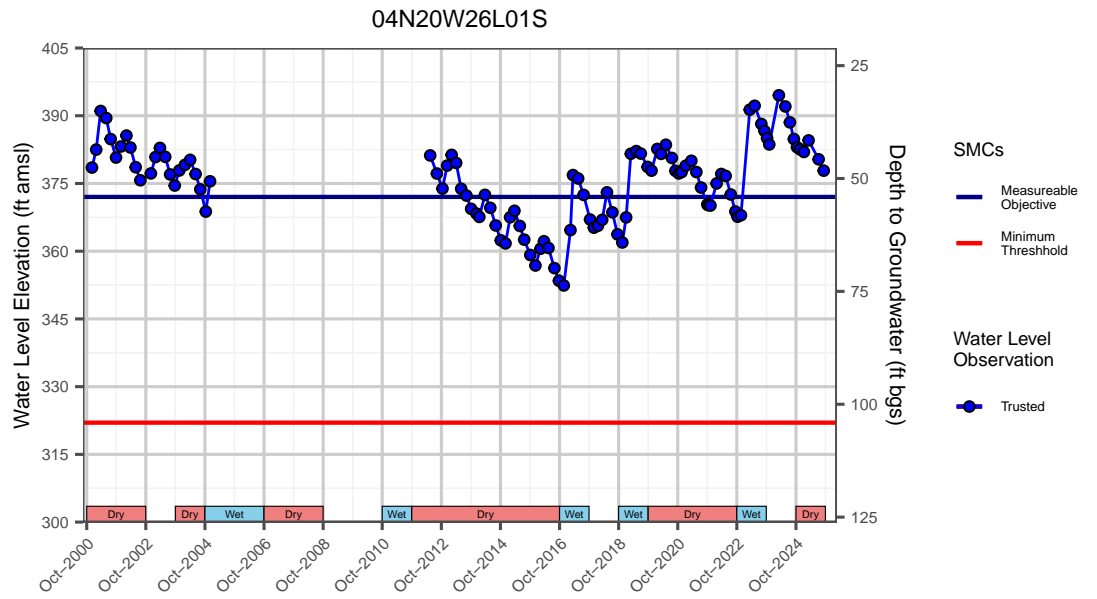
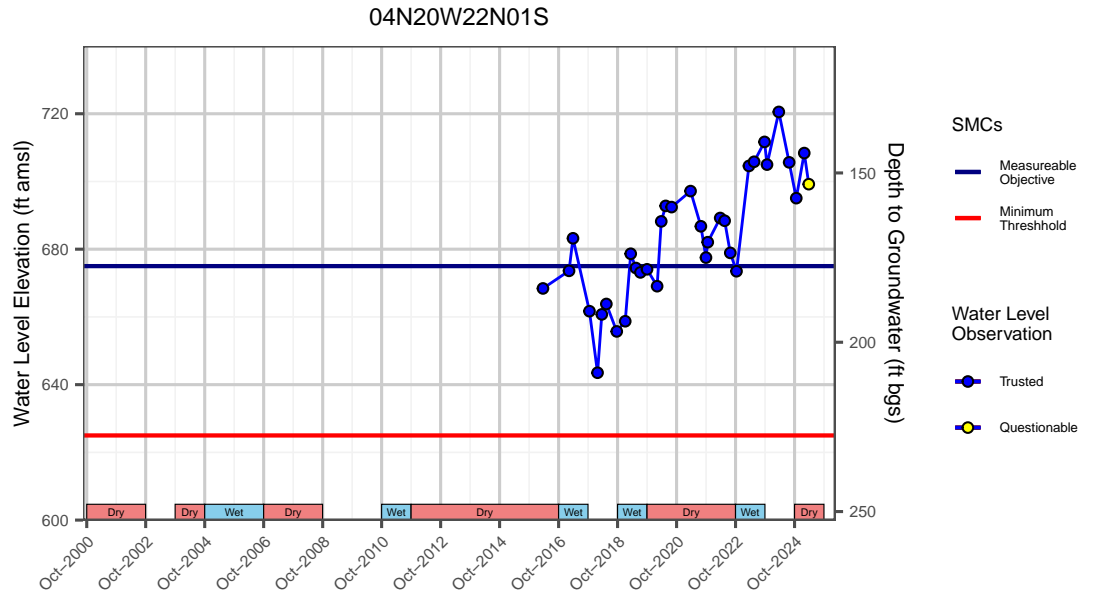
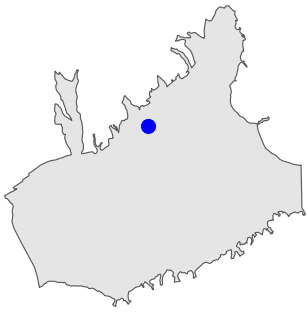












# Piru Groundwater Subbasin GSP Annual Report Water Year 2025

---

Submitted to



California Department of  
Water Resources

Submitted by



Prepared by



143E Spring Hill Drive  
Grass Valley, CA 95945

[www.dbstephens.com](http://www.dbstephens.com)

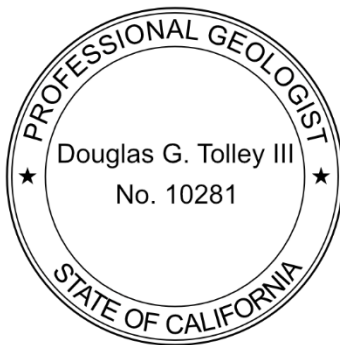
Project# DB24.1345.00

March 19, 2026

## Certification

This report was prepared in accordance with generally accepted professional hydrogeologic principles and practices. This report makes no other warranties, either expressed or implied as to the professional advice or data included in it. This report has not been prepared for use by parties or projects other than those named or described herein. It may not contain sufficient information for other parties or purposes.

**DANIEL B. STEPHENS & ASSOCIATES, INC.**



Douglas (Gus) Tolley, PhD, PG  
Project Hydrogeologist  
[gtolley@geo-logic.com](mailto:gtolley@geo-logic.com)  
143E Spring Hill Drive  
Grass Valley, CA 95945

Date signed:

# Table of Contents

Certification .....	i
1. Introduction .....	1
2. Groundwater Elevations .....	2
3. Groundwater Extractions .....	2
4. Surface Water Supply .....	4
5. Total Water Use .....	4
6. Change in Groundwater Storage .....	4
7. Progress Towards GSP Implementation .....	5
7.1 Project #1: Supporting the Cienega Springs Restoration Project as a Drought Refuge .....	5
7.2 Project #7: Subsidence Infrastructure Vulnerability .....	5
7.3 Groundwater Model Updates .....	6
7.4 DMS Maintenance .....	6
8. References .....	6

## List of Tables

Table 1. Groundwater Extractions

Table 2. Surface Water Use

Table 3. Total Water Use

## List of Figures

Figure 1. Location Map

Figure 2. Spring Water Levels Contour Map

Figure 3. Fall Water Levels Contour Map

Figure 4. Agricultural Groundwater Extractions

Figure 5. Domestic, Municipal, and Industrial Groundwater Extractions

Figure 6. Total Groundwater Extractions

Figure 7. Change in Groundwater in Storage

Figure 8. Groundwater Pumping and Change in Groundwater Storage

## List of Appendices

Appendix A - Representative Monitoring Point (RMP) Hydrographs

## Acronyms and Abbreviations

<u>Acronym/Abbreviation</u>	<u>Definition</u>
AF	acre-feet
AFY	acre-feet per year
Ag	agriculture
amsl	above mean sea level
Basin	Fillmore subbasin of the Santa Clara River Valley basin
CCR	California Code of Regulations
CIMIS	California Irrigation Management Information System
DBS&A	Daniel B. Stephens & Associates, Inc.
DWR	[CA] Department of Water Resources
FPBGSA	Fillmore and Piru Basins Groundwater Sustainability Agency
FT	feet
GSA	Groundwater Sustainability Agency
GSP	Groundwater Sustainability Plan
MO	Measurable Objective
MT	Minimum Threshold
RMP	Representative Monitoring Point
SGMA	Sustainable Groundwater Management Act
SMC	Sustainable Management Criteria
SWRCB	State Water Resources Control Board
United	United Water Conservation District
WLE	water level elevation
WY	water year

## Executive Summary

Water year (WY) 2025 was a dry year for the Piru subbasin. Precipitation measured at the CIMIS Moorpark station (#217) was 11.76 in, or about 59% of the annual average of 19.965 in from WY 2017-2024. Groundwater levels in the subbasin decreased by an average of 11.97 ft from October 2024 to October 2025. Groundwater in storage decreased by an estimated 8,416 acre-ft (AF). Groundwater extractions and surface water diversions were estimated to be 12,259 AF and 628 AF, respectively, totaling 12,887 AF of water used beneficially in the basin during WY 2025. GSP implementation activities that keep the subbasin at established sustainability goals have continued. These include ongoing research into improving monitoring networks for groundwater dependent ecosystems (GDEs) and groundwater-surface-water (GW-SW) interactions; consideration and discussions of updates to the well permit application review workflow; and maintenance of the database management system (DMS).

## 1. Introduction

The Piru Subbasin (the Basin) is managed with the adjacent Fillmore Subbasin by the Fillmore and Piru Basins Groundwater Sustainability Agency (the Agency). Following the submittal of the Piru Subbasin Groundwater Sustainability Plan (GSP) on January 31, 2022, the Agency is required to submit an annual report for the preceding Water Year (October 1 through September 30) to DWR by April 1 (23 CCR §356.2). These annual reports provide a summary of hydrologic conditions and water use in the Basin (Figure 1) using observed data from monitoring networks and/or estimated using best available methods. This annual report provides a summary of Basin water use and changes in groundwater storage during the period from October 1, 2024 to September 30, 2025, and provides context for Basin conditions relative to the sustainable management criteria developed for the Basin. This report has been prepared in accordance with the requirements for annual reports as identified in the Sustainable Groundwater Management Act (SGMA). More detailed analysis and discussion of long-term hydrologic trends will be included in the periodic evaluation of the GSP the Agency is required to perform at least every five years (23 CCR §356.4).

For additional clarification or more detailed information on the basin plan area or conditions, please refer to the Piru Subbasin GSP. As acknowledged by the Department of Water Resources, it is important to note that there are still some data gaps and missing information as the Agency continues to gather information for better analysis and decisions.

## 2. Groundwater Elevations

Groundwater elevation contour maps for the spring and fall of 2025 are shown in Figure 2 and Figure 3, respectively. These maps depict the seasonal high (Spring) and low (Fall) water level elevations in the Basin. Spring and Fall water level elevations are defined as observations within a 100 day period centered on April 1st or October 1st. If a well has multiple observations within this period, then the value collected nearest to April 1st or October 1st is used unless otherwise noted. The Basin is conceptualized as a single aquifer, and therefore subsetting water level data by well screen depth was not required.

Observed spring groundwater elevations (Figure 2) ranged from 501.81 to 701.19 ft above mean sea level (amsl), with an average elevation of 580.89 ft amsl. Fall groundwater elevations (Figure 3) ranged from 510.62 to 675.26 ft amsl, with an average elevation of 569.09 ft amsl. Flow is generally from east to west, but is influenced by recharge along the margins of the valley and drawdown in the vicinity of high-capacity irrigation wells. Observed groundwater elevation changes from Fall 2024 to Fall 2025 ranged from -32.12 to -1.84 ft with an average change of -11.97 ft.

Hydrographs with SMCs for representative monitoring points (RMPs) in the Basin are shown in Appendix A. Hydrographs for all wells can be accessed via the [FPBGSA DMS](#).

## 3. Groundwater Extractions

Groundwater pumpers that produce groundwater from the Basin pay United Water Conservation District (UWCD) and the Agency an extraction fee based on the number of acre-ft they pump. Prior to 2022, this was reported on a 6-month basis (reporting to UWCD twice per calendar year). Period 1 covers January through June, and period 2 covers July through December of each year. A description of the historical groundwater extraction monitoring in Piru Basin is provided in Section 3.5.1.4 of the Piru Subbasin GSP. To better comply with SGMA reporting requirements, the Agency is requesting growers voluntarily report groundwater extractions on a quarterly (3-month) basis.

Groundwater pumpers are required to self-report groundwater extractions by well to UWCD using one of three methods: domestic multiplier, electrical meter (based on Southern California Edison efficiency testing), or water flow meter. For non-reporters, an estimate from historical usage is entered in the groundwater production database for accounting and basin volume

calculation purposes. For wells with water meters, reporting typically involves filing out a form and submitting an accompanying photograph of the digital totalizer reading. The extent to which “smart meters” or automated (advanced) metering infrastructure (AMI) technology is used by individual well owners to quantify their groundwater production is unknown in the Piru Basin. There is not currently a mechanism by which well owners can automatically report groundwater production from their water meters to UWCD or the Agency. De minimis domestic pumping can be reported to UWCD using a multiplier of 0.2 AF per person in a household per 6-month period with a minimum of 0.5 AF (e.g., if there are 1 or 2 people reporting domestic usage on a well, then 0.5 AF minimum is assessed). De minimis pumpers (extractors) that have a meter on their well discharge have the option of calculating their usage based on the meter reading which may show less than 0.5 AF usage, and are billed based on actual usage.

Estimated groundwater extractions for WY 2025 grouped by water use sector and measurement method are shown in Table 1. Pumping from October through December 2024 was estimated for wells that did not report quarterly by scaling the reported volumes from period 2 of that year by the fraction of reference ET from the Moorpark CIMIS station that occurred during that time. Using this method, an estimated 14 AF (33%) of 2024 period 2 (July - December) groundwater pumping occurred during WY 2025. Due to the timing of the 6-month measurement and billing cycle described above, only voluntarily reported quarterly extractions during period 2 (July - December) of 2025 were available at the time this annual report was developed. Voluntarily reported extractions for July through September 2025 were estimated to represent approximately 98% of total extractions during that period using the complete 2025 period 1 (January - June) data set for reference. The difference between the reported and estimated total extraction volume was assigned to wells that did not voluntarily report using proportions obtained from the complete 2025 period 1 (January - June) data set.

Groundwater pumping within each public land survey (PLSS) section (1 mi<sup>2</sup>) shows the spatial distribution of agricultural (Figure 4), municipal & industrial (Figure 5), and total (Figure 6) groundwater extractions within the Basin. Groundwater pumping totaled approximately 12,259 AF, with agricultural beneficial uses accounting for about 93% of total groundwater extractions for WY 2025.

## 4. Surface Water Supply

Surface water used in the Basin grouped by source and measurement method is summarized in Table 2. All surface water diversions are used beneficially for agricultural irrigation. Total reported surface water used in the Basin during WY 2025 was 628 AF.

## 5. Total Water Use

Total water use in the Basin grouped by water use sector and measurement method is shown in Table 3. Total water volume used in the Basin during WY 2025 was estimated to be 12,887 AF.

## 6. Change in Groundwater Storage

Change in groundwater storage for WY 2025 was estimated using differences in water level elevations from Fall 2024 to Fall 2025. Observed differences in water levels were interpolated to a 65x65 ft (20x20 m) grid using the universal kriging method. Volume was calculated by multiplying the area of each cell by the estimated change in water level and vertically integrated aquifer storage coefficient for each respective cell. The vertically integrated aquifer storage coefficients were calculated as the thickness weighted average of each model grid cell in the UWCD groundwater model, and ranged from 0.09 to 0.15. The total change in storage for the Basin was calculated by summing the estimated change in volume for all cells and then multiplying by a scaling factor of 2.09. The scaling factor accounts for the interpolation area not covering the entire area where pumping is known to occur in the Basin due to the location and data availability of monitoring wells. It is defined as the ratio of the area within the groundwater basin boundary area and a half-mile radius of each production well to the water level change interpolation area. This assumes that water level changes in areas of the basin with no observations are similar to those with observations.

A map of the change in storage for WY 2025 with contour lines showing water level differences is shown in Figure 7. Estimated total change in storage for WY 2025 is -8,416 AF. Figure 8 shows annual groundwater pumping and change in storage, along with cumulative storage since WY 2000. Current storage condition relative to WY 1988 is +3,947 AF. Negative change in storage is expected due to dry conditions for WY 2025.

## 7. Progress Towards GSP Implementation

The Piru Subbasin GSP provided seven Projects or Management Actions that the FPBGSA Board of Directors would implement or consider implementing to facilitate the maintenance of sustainable conditions in the basin (see Section 4 of the GSP). The FPBGSA completed Projects #2 and #3 in WY 2022, and have continued work on Projects #1 and #7. The remaining Project or Management Actions (Projects #4 - #6 detailed in the GSP) have yet to be discussed by the FPBGSA Board of Directors. These projects or management actions will be considered by the Board of Directors over the next year and it is anticipated that more substantive updates will be included in future Annual Reports. Below is a description of activities related to each project that occurred during WY 2025.

### 7.1 Project #1: Supporting the Cienega Springs Restoration Project as a Drought Refuge

A program team with expertise in GDE ecology (Stillwater Sciences, The Nature Conservancy, UCSB, Santa Clara River Conservancy), and hydrogeology (DBS&A, UWCD) was formed early in WY 2024. The team met several times to flesh out the general project concept (e.g., start as pilot project with limited footprint, tentative identification of land parcel potentially suitable for pilot program). An eco-subgroup of the program team was formed to focus on ecological considerations such as how many acres of land should be included in pilot program, ecological rationale(s) for triggers to start-stop supplemental water deliveries, how much supplemental water should be delivered, and timing of supplemental water deliveries. Potential existing wells that could be used as a supplemental water source for a pilot program were also identified. The program team developed a general implementation timeline through FY2026-2027 that was presented at the December 2024 FPBGSA board of director's meeting.

### 7.2 Project #7: Subsidence Infrastructure Vulnerability

The project team has consulted with DWR representatives regarding the technical approach for evaluating infrastructure vulnerability in the basin. A revised subsidence vulnerability technical memorandum is in progress and incorporates suggestions from DWR consultations and their Recommended Corrective Actions (RCAs). The technical approach is in general agreement with the Final Land Subsidence Best Management Practices (BMP) guidance for basins that have not historically experienced subsidence. The Technical Memorandum expands upon previous versions by identifying industry standards for differential settlement for a variety of major infrastructure types that can be used to help provide rationale for establishing Minimum

Thresholds. A key component in the vulnerability assessment is the use of the updated groundwater flow model (see Section 7.3 Groundwater Model Updates) to forecast whether future groundwater levels (including the effects of climate change) are expected to fall below the historic levels that could establish conditions conducive for the initiation of subsidence. The technical memorandum will be included as part of the Periodic Evaluation documentation.

### 7.3 Groundwater Model Updates

In preparation for the required five-year GSP evaluation, updates to the groundwater model are in progress. The most significant change is a more refined grid that can better capture interactions between groundwater and surface water at the reach scale. The historical simulation period has also been extended through calendar year 2023. Details will be provided in a separate technical memorandum when updates are completed in 2026.

### 7.4 DMS Maintenance

The FPBGSA has continued to maintain and update the Fillmore and Piru DMS (<https://fillmore-piru.gladata.com>), which provides stakeholders access to all available groundwater data in the subbasin using a user-friendly, map-based web interface. Groundwater levels are typically uploaded bi-annually, coincident with the July 1 and December 31 reporting dates set by DWR. Water quality and well production data are uploaded annually, coincident with GSP annual report preparation.

## 8. References

- DBS&A. 2021. Fillmore and Piru Basins Land Subsidence Evaluation. Technical Memo.  
<https://bit.ly/3mQTPTb>
- DBS&A. 2022. Piru Groundwater Subbasin Annual Report WY2021. Technical Report.  
<https://sgma.water.ca.gov/portal/service/gspar/document/1404>
- DBS&A. 2023. Piru Groundwater Subbasin Annual Report WY2022. Technical Report.  
<https://sgma.water.ca.gov/portal/service/gspar/document/2074>
- DBS&A. 2023. Fillmore and Piru Basins Subsidence Update (FINAL). Technical Memorandum.  
<https://bit.ly/3w7OFXf>

DBS&A. 2024. Piru Groundwater Subbasin Annual Report WY2023. Technical Report.

<https://sgma.water.ca.gov/portal/service/gspar/document/2957>

DBS&A. 2025. Piru Groundwater Subbasin Annual Report WY2024. Technical Report.

<https://sgma.water.ca.gov/portal/service/gspar/document/4564>

Fillmore and Piru Basins Groundwater Sustainability Agency. 2022. Groundwater Sustainability Plan: Fillmore Basin (Final). <https://www.fpbgsa.org/fillmore-draft-gsp/>

Racz, A.J., A.T. Fisher, C.M. Schmidt, B.S. Lockwood, M. Los Huertos. 2011. Spatial and Temporal Infiltration Dynamics During Managed Aquifer Recharge. Groundwater. September 2011.

[https://websites.pmc.ucsc.edu/~afisher/CVpubs/pubs/Racz2011\\_GW-MAR.pdf](https://websites.pmc.ucsc.edu/~afisher/CVpubs/pubs/Racz2011_GW-MAR.pdf)

Schmidt, C.M., A.T. Fisher, A.J. Racz, B.S. Lockwood, M. Los Huertos. 2011. Linking Denitrification and Infiltration Rates during Managed Groundwater Recharge. Environmental Science & Technology. September 13, 2011.

[https://websites.pmc.ucsc.edu/~afisher/CVpubs/pubs/Schmidt2011\\_EST.pdf](https://websites.pmc.ucsc.edu/~afisher/CVpubs/pubs/Schmidt2011_EST.pdf)

United Water Conservation District. 2021. Ventura Regional Groundwater Flow Model Expansion and Updated Hydrogeologic Conceptual Model for the Piru, Fillmore, and Santa Paula Groundwater Basins, Open-File Report 2021-01. Appendix E of the Groundwater Sustainability Plan: Fillmore Basin (Final). <https://bit.ly/3JCOx6l>

## Tables

**Table 1. Groundwater Extractions**

Sector	Method	GW Extraction Volume (AF)	Accuracy (%)	Range (AF)
Agriculture	Electrical Efficiency	2,320	± 20	1,856 - 2,784
	Water Meter	9,038	± 5	8,586 - 9,490
Agriculture Subtotal		11,358		10,442 - 12,274
Domestic, Municipal and Industrial	Domestic	20	± 20	16 - 24
	Electrical Efficiency	19	± 20	15 - 22
	Water Meter	862	± 5	818 - 905
Domestic, Municipal and Industrial Subtotal		901		849 - 951
<b>Total</b>		<b>12,259</b>		<b>11,291 - 13,225</b>

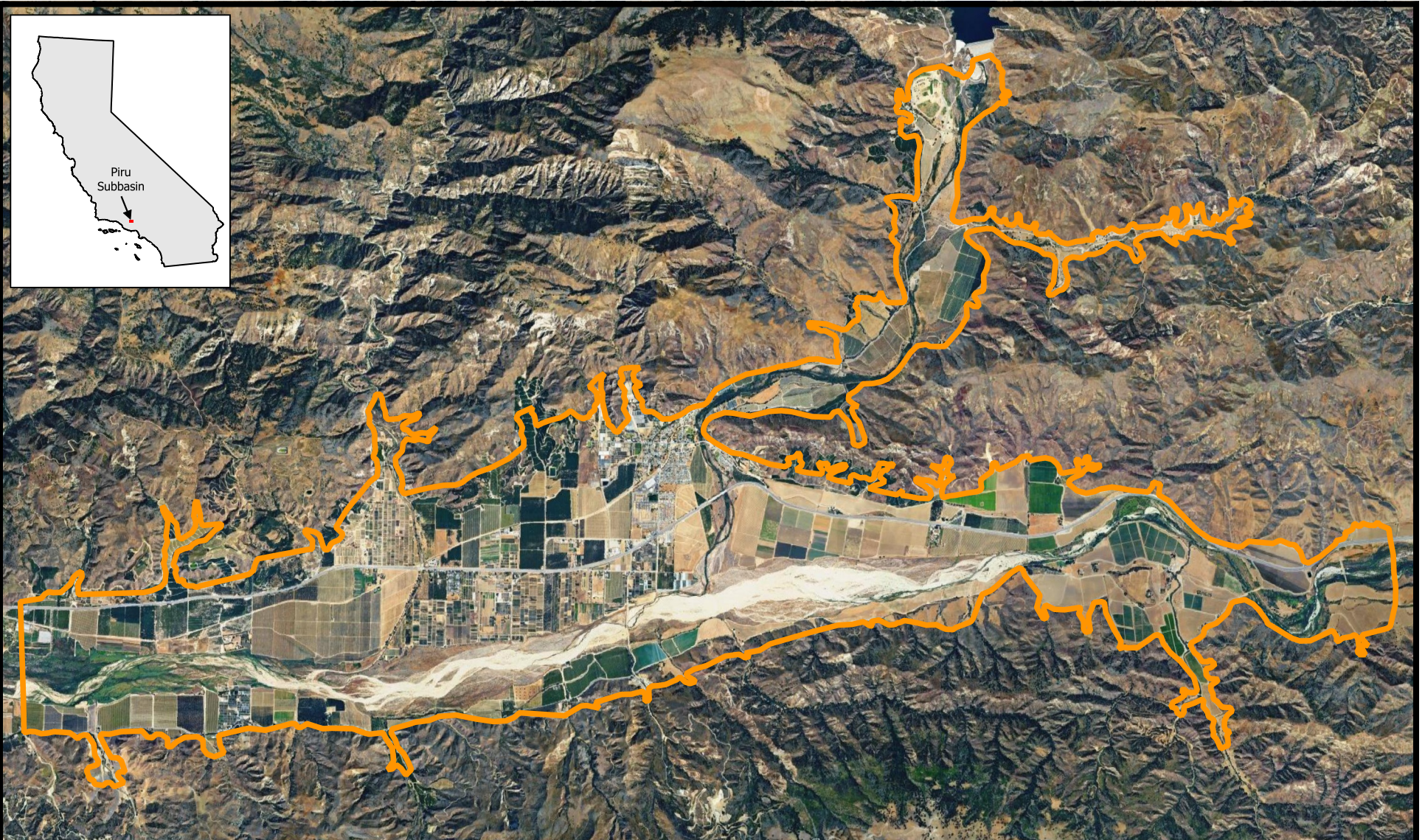
**Table 2. Surface Water Use**

Surface Water Source	Method	Annual Volume Used (AF)	Accuracy (%)	Range (AF)
Local Supplies (AF)	Water Meter	628	± 5	597 - 659
<b>Total</b>		<b>628</b>		<b>597 - 659</b>

**Table 3. Total Water Use**

Sector	Method	Total Annual Volume (AF)	Accuracy (%)	Range (AF)
Agriculture	Electrical Efficiency	2,320	± 20	1,856 - 2,784
	Water Meter	9,666	± 5	9,183 - 10,149
Agriculture Subtotal		11,986	-	11,039 - 12,933
Domestic, Municipal, and Industrial	Domestic	20	± 20	16 - 24
	Electrical Efficiency	19	± 20	15 - 22
	Water Meter	862	± 5	818 - 905
Domestic, Municipal, and Industrial Subtotal		901	-	849 - 951
<b>Total</b>		<b>12,887</b>		<b>11,888 - 13,884</b>

## Figures



Source: <https://gis.water.ca.gov>

**Explanation**

 Groundwater Basin Boundary

0 0.5 1 mi

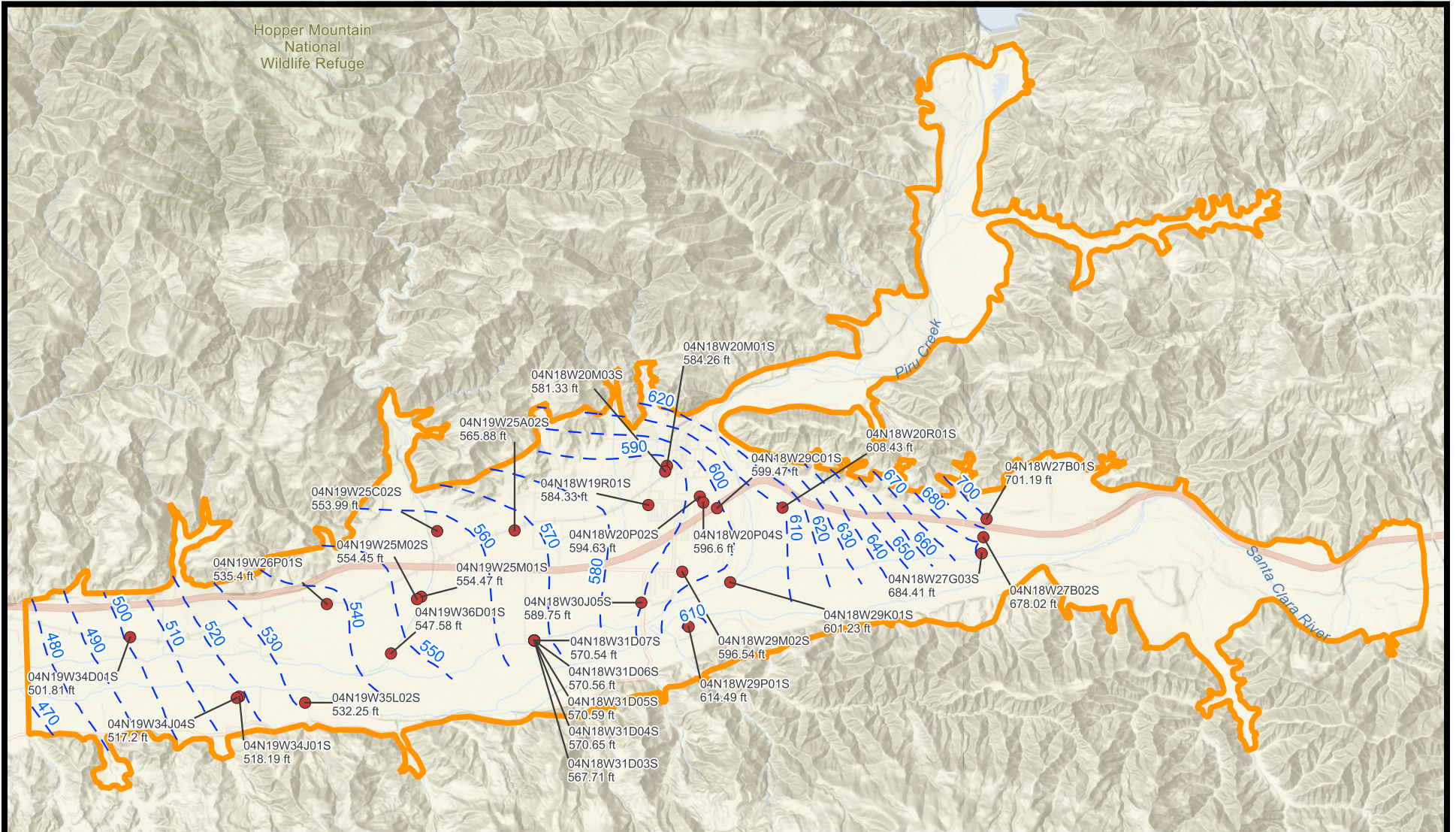


**PIRU SUBBASIN ANNUAL REPORT  
Location Map**



02/13/2026 DB24.1345.00

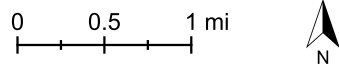
Figure 1



Source: <https://fillmore-piru.gladata.com>

**Explanation**

- Well Name
- — — Groundwater Elevation (ft amsl)
- Groundwater Basin Boundary
- — — Water Level Contour (ft amsl)

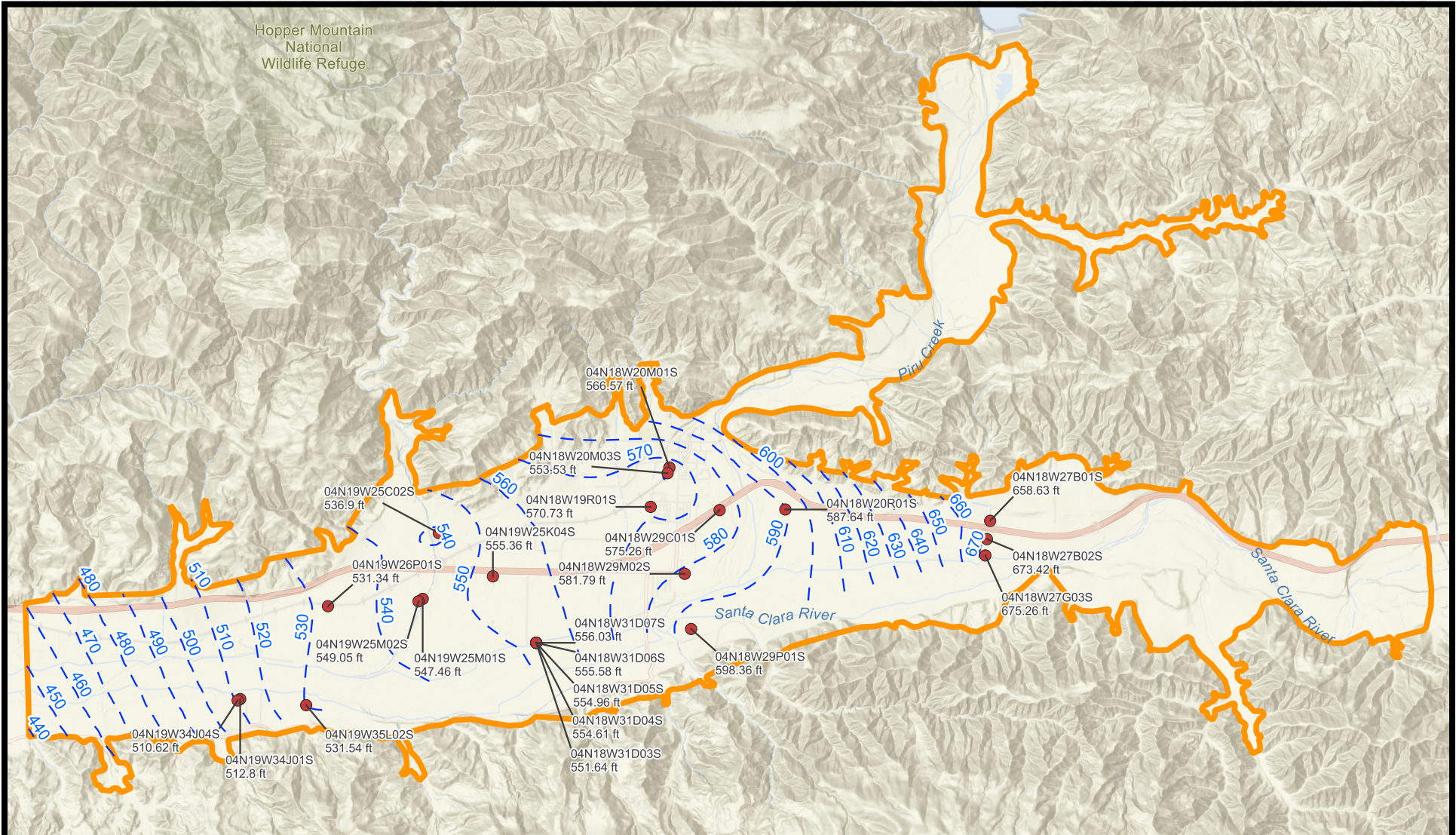


02/13/2026 DB24.1345.00



PIRU SUBBASIN ANNUAL REPORT  
**Groundwater Elevation Contours**  
**Spring 2025**

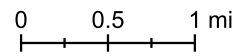
Figure 2



Source: <https://fillmore-piru.gladata.com>

**Explanation**

- Well Name
- Groundwater Elevation (ft amsl)
- Groundwater Basin Boundary
- Water Level Contour (ft amsl)



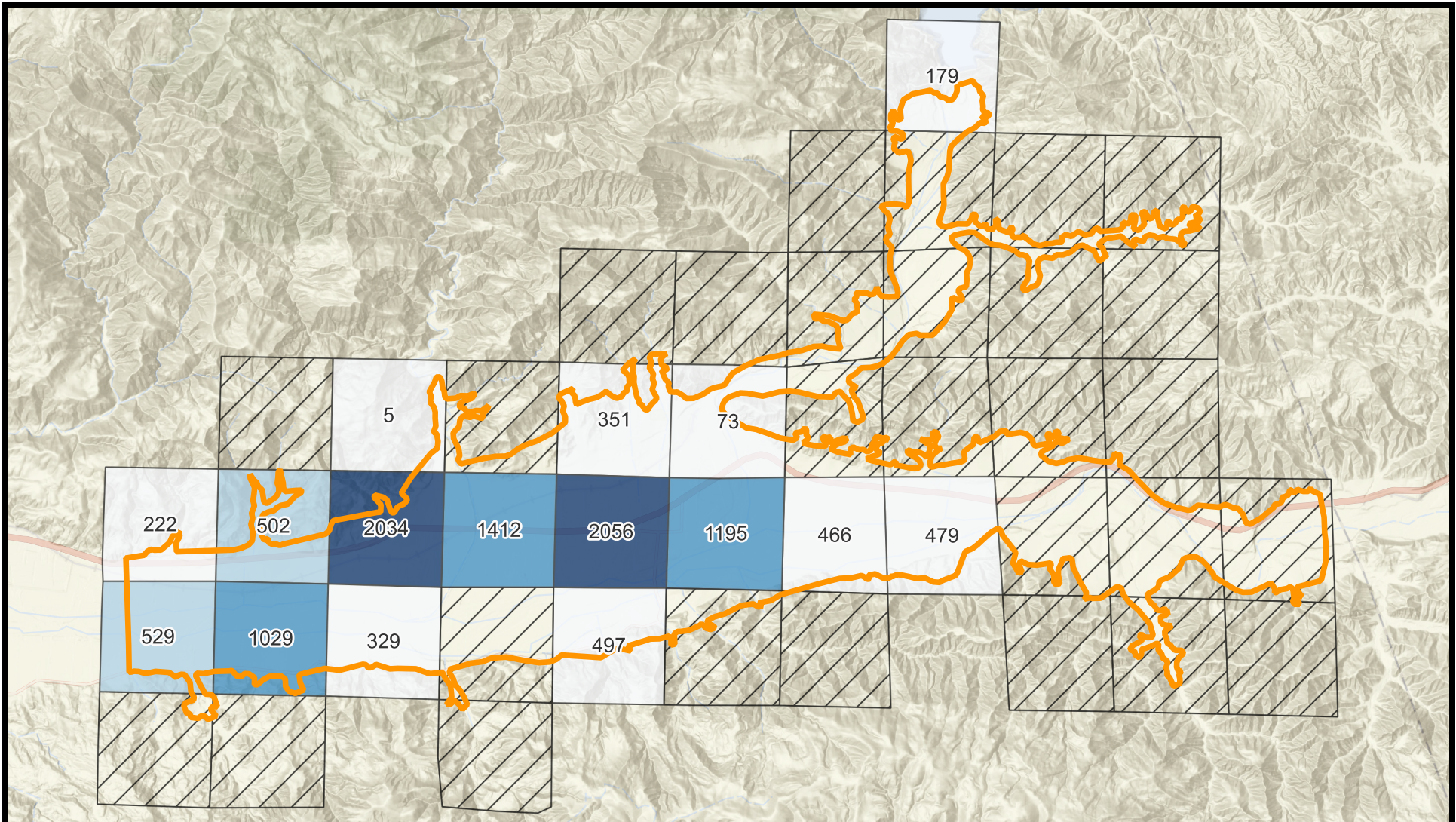
a Geo-Logic Company  
DB24.1345.00

02/13/2026



**PIRU SUBBASIN ANNUAL REPORT  
Groundwater Elevation Contours  
Fall 2025**

Figure 3



Source: <https://fillmore-piru.gladata.com>

**Explanation**

- |                        |               |                            |
|------------------------|---------------|----------------------------|
| Extraction Volume (AF) | 500 - 1,000   | Groundwater Basin Boundary |
| No Extractions         | 1,000 - 1,500 |                            |
| 0 - 500                | > 1,500       |                            |

**Notes:**

1. Estimated extraction volumes aggregated by public land survey system section.
2. Labels indicate estimated extraction volume in acre-ft (AF).
3. Agricultural groundwater extractions totaled 11,358 AF.



PIRU SUBBASIN ANNUAL REPORT

**Estimated Groundwater Extractions WY 2025  
Agricultural**



02/16/2026 DB24.1345.00

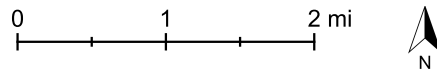
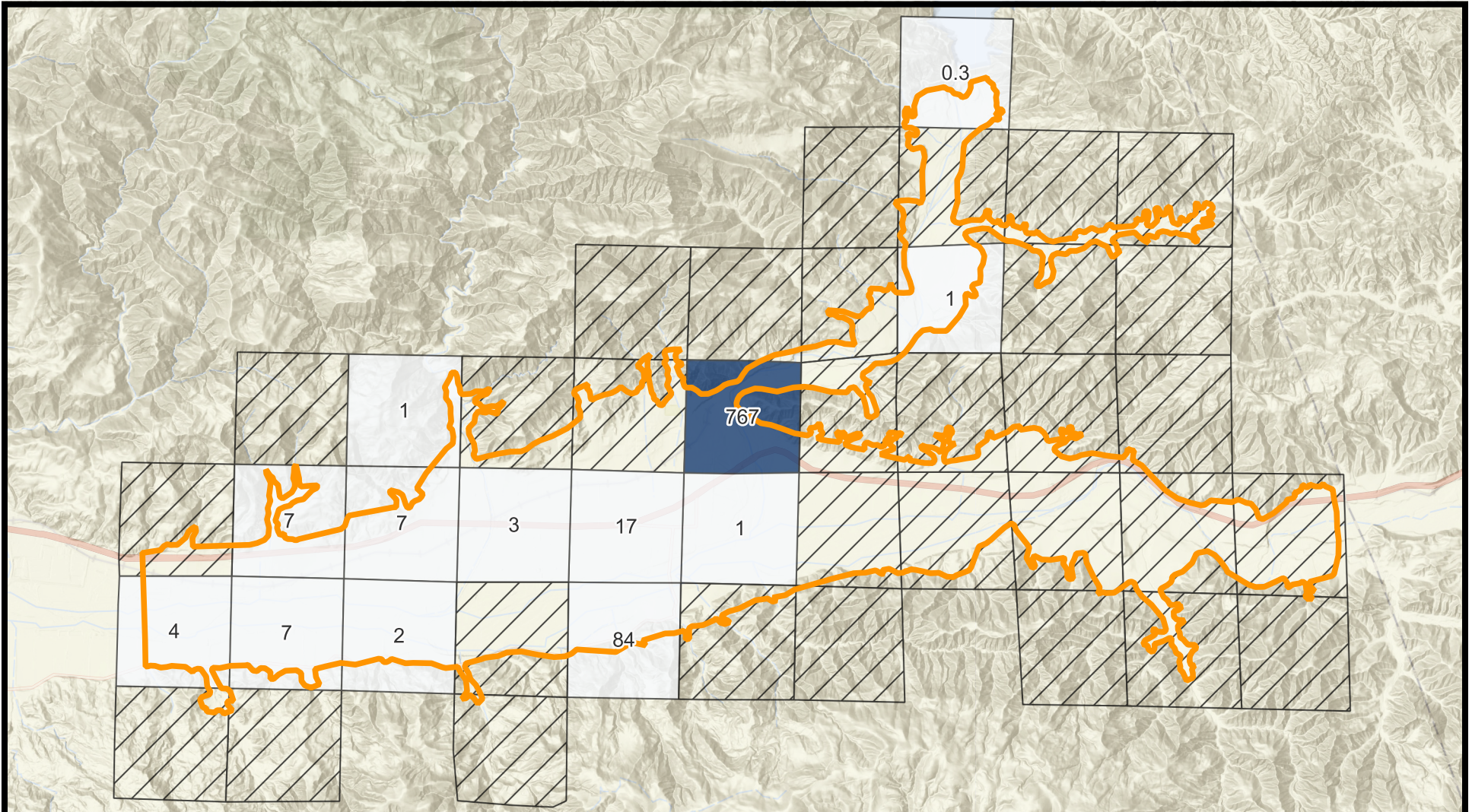








Figure 4



Source: <https://fillmore-piru.gladata.com>

**Explanation**

- |  |  |
|--|--|
| Extraction Volume (AF)   |  400 - 600                  |
|  No Extractions |  600 - 800                  |
|  0 - 200        |  Groundwater Basin Boundary |
|  200 - 400      |  |

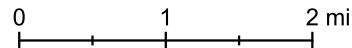
**Notes:**

1. Estimated extraction volumes aggregated by public land survey system section.
2. Labels indicate estimated extraction volume in acre-ft (AF).
3. Domestic, municipal, and industrial groundwater extractions totaled 901 AF.



PIRU SUBBASIN ANNUAL REPORT

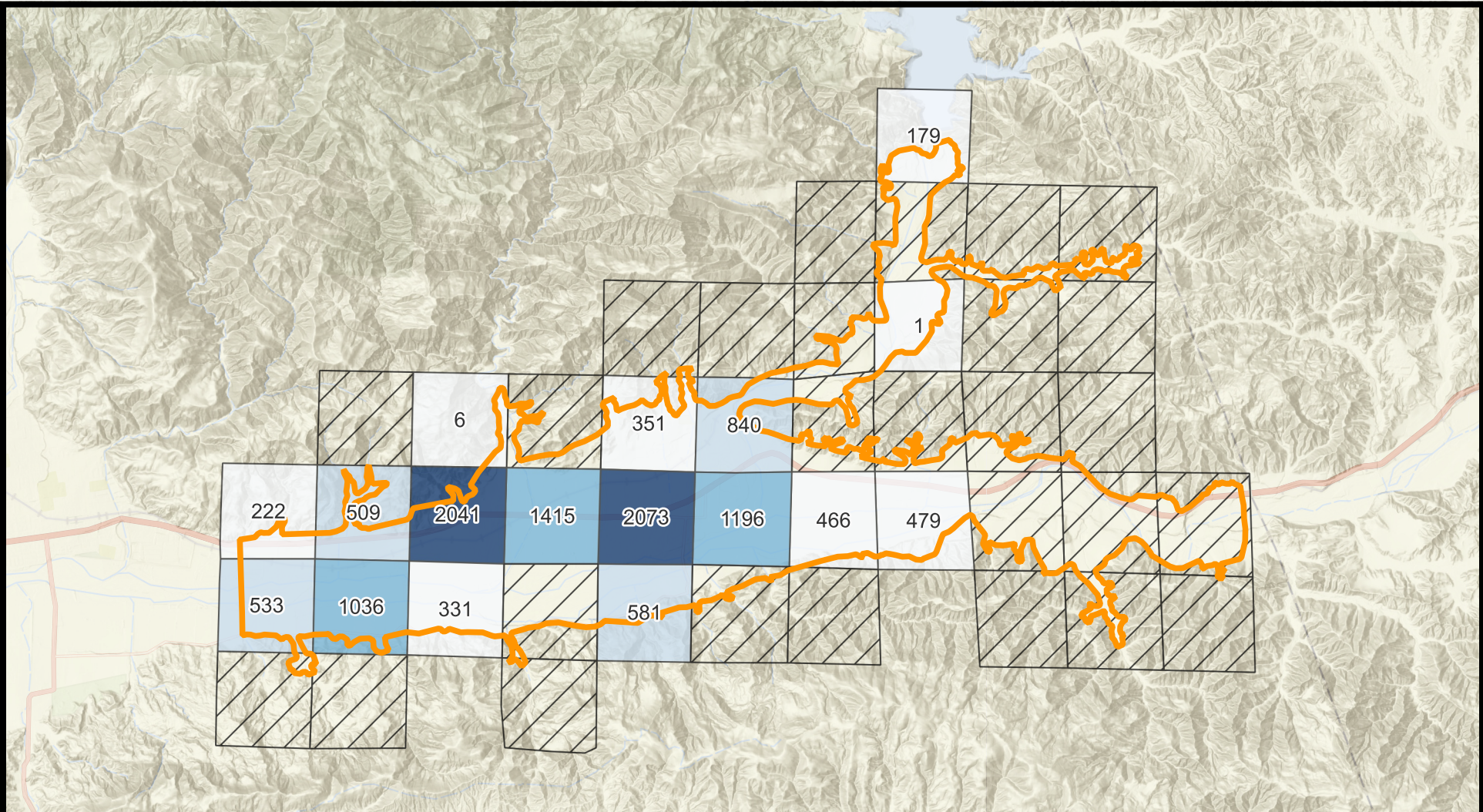
**Estimated Groundwater Extractions WY 2025  
Domestic, Municipal, and Industrial**



a Geo-Logic Company  
DB24.1345.00

02/13/2026

Figure 5



Source: <https://fillmore-piru.gladata.com/>

**Explanation**

- |                        |               |                            |
|------------------------|---------------|----------------------------|
| Extraction Volume (AF) | 1,000 - 1,500 | Groundwater Basin Boundary |
| No Extractions         | 1,500 - 2,000 |                            |
| < 500                  | > 2,000       |                            |
| 500 - 1,000            |               |                            |

**Notes:**

1. Estimated extraction volumes aggregated by public land survey system section.
2. Labels indicate estimated extraction volume in acre-ft (AF).
3. Piru subbasin groundwater extractions totaled 12,259 AF.



PIRU SUBBASIN ANNUAL REPORT

**Estimated Groundwater Extractions WY 2025**

**Total**



02/13/2026

a Geo-Logic Company  
DB24.1345.00

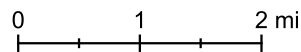
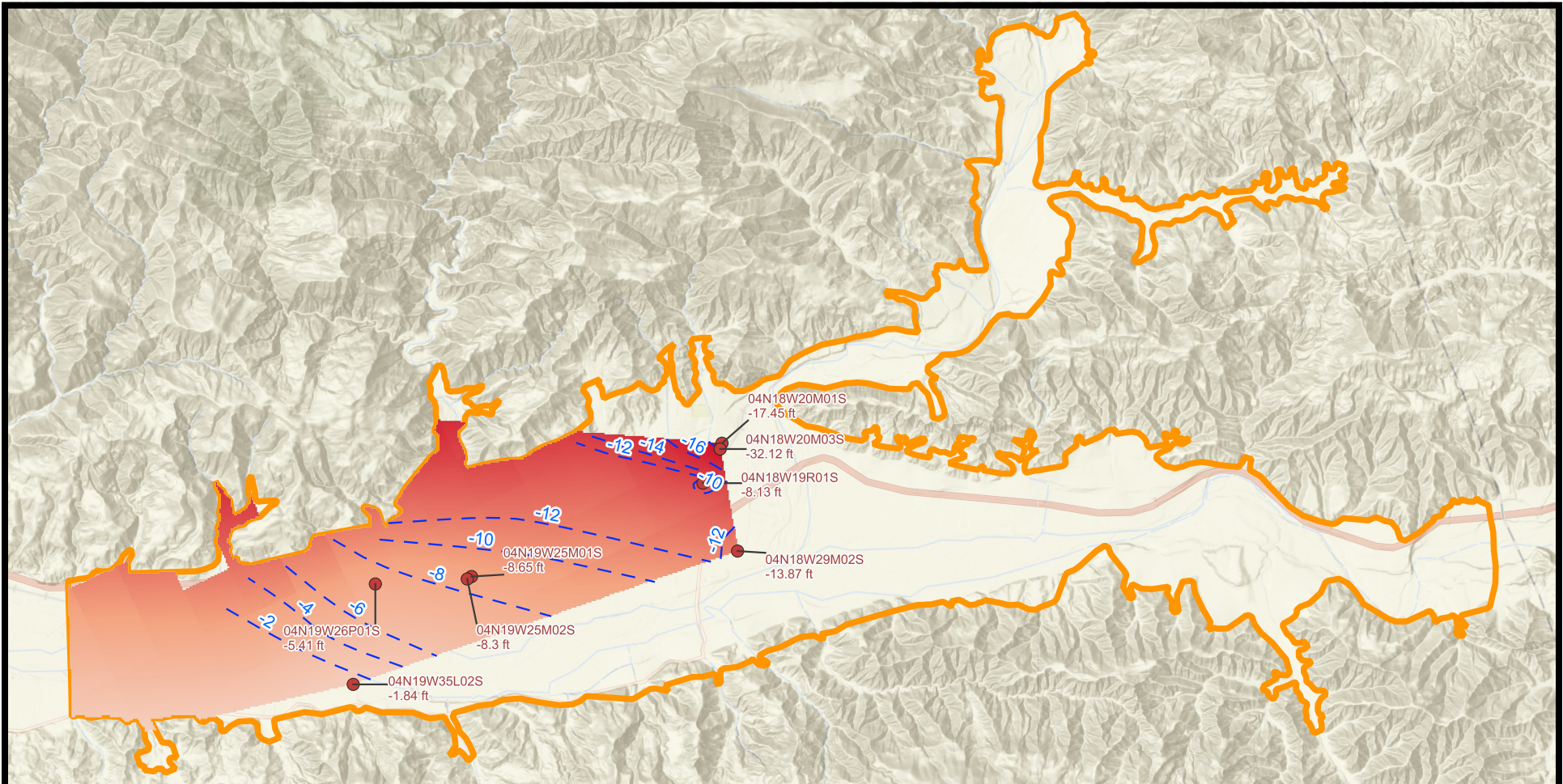


Figure 6



**Explanation**

- Estimated Groundwater Storage Change (AF)
  - +0.2
  - 0.2
- Well Name
- Change in Groundwater Elevation (ft amsl)
- Water Level Elevation Change Contour (ft)
- Groundwater Basin Boundary

**Notes:**

1. Storage change estimated by interpolating changes in observed water levels to a 65 x 65 ft grid and multiplying by the vertically integrated aquifer storage coefficient for each grid cell.
2. Vertically integrated aquifer storage coefficient calculated as the thickness weighted average of aquifer storage coefficients for each model layer used in the United groundwater model.
3. Estimated WY 2025 total groundwater storage change is -8,416 AF.



PIRU SUBBASIN ANNUAL REPORT

**Estimated Change in Groundwater in Storage WY 2025**



03/12/2026 DB24.1345.00

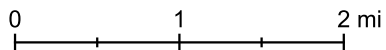
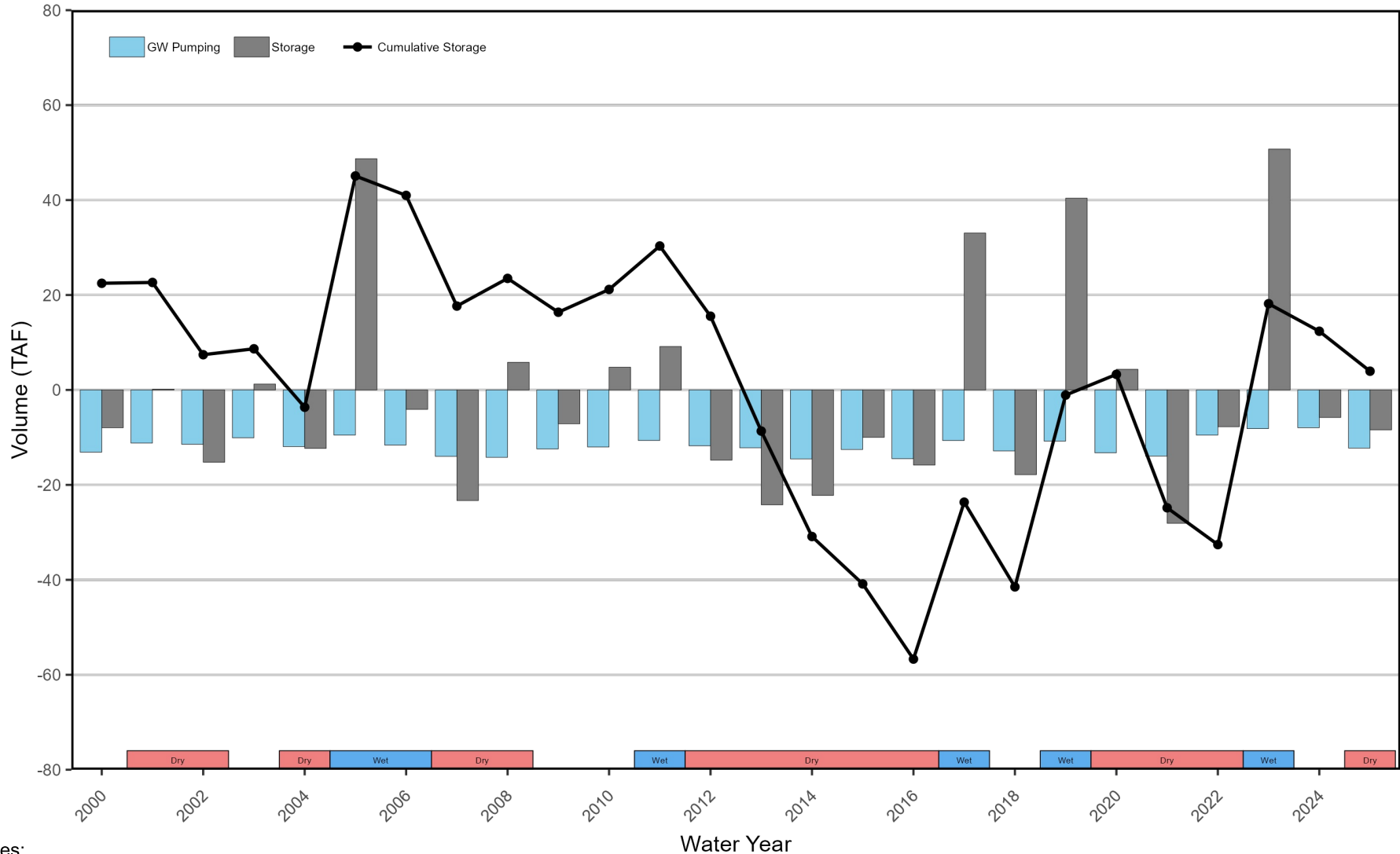


Figure 7

## Annual Groundwater Pumping and Change in Storage



- Notes:
1. Negative GW pumping values indicate extractions from groundwater aquifer.
  2. Positive storage values indicate increasing groundwater levels.
  3. Change in storage volumes estimated from water level data for WY 2021-2024.
  4. Red and blue colored bars at bottom of graph indicate dry/critical and wet water year types, respectively, from San Joaquin Valley Water Year Hydrologic Classification Indices.

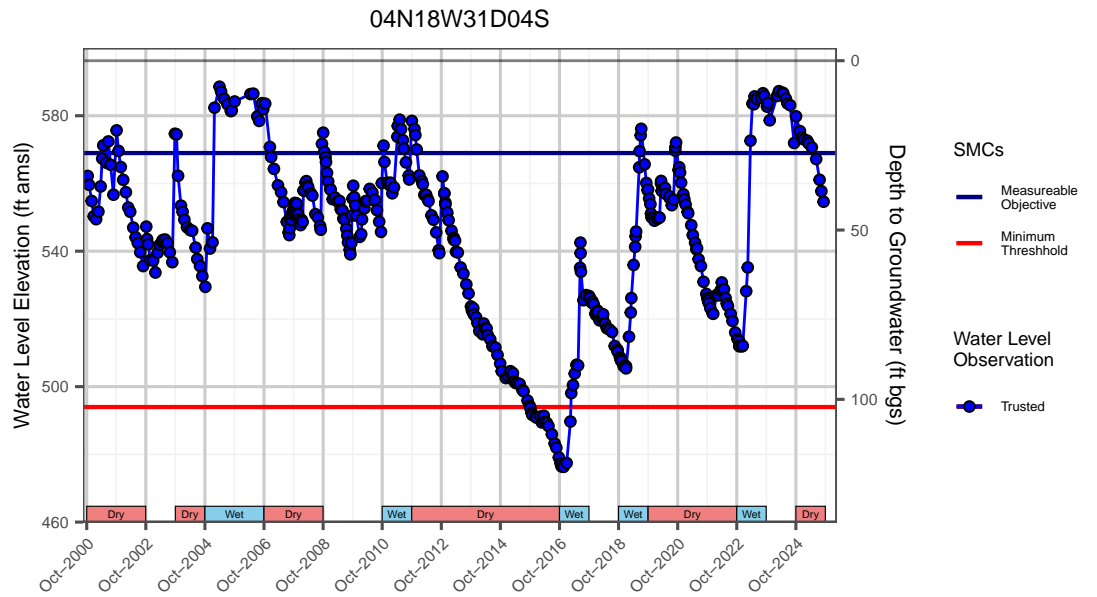
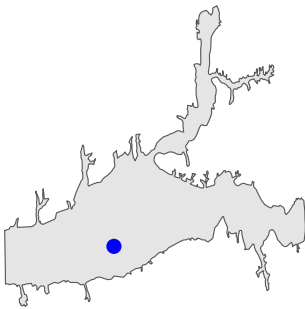
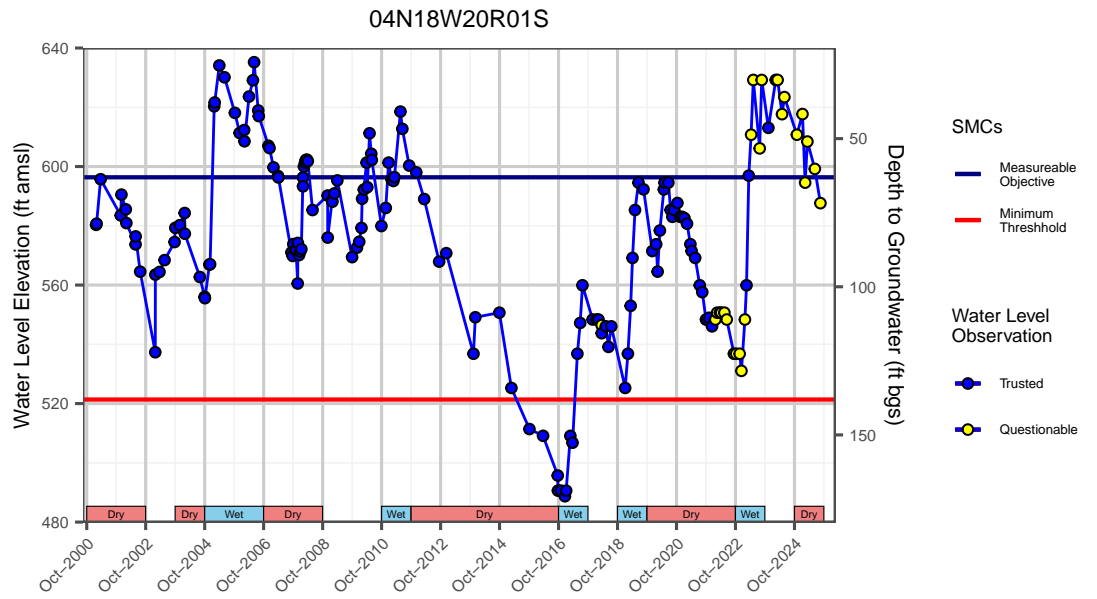
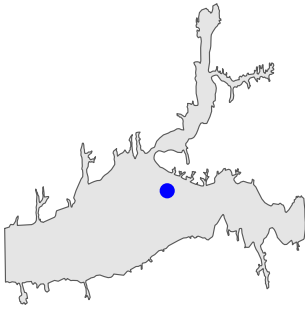
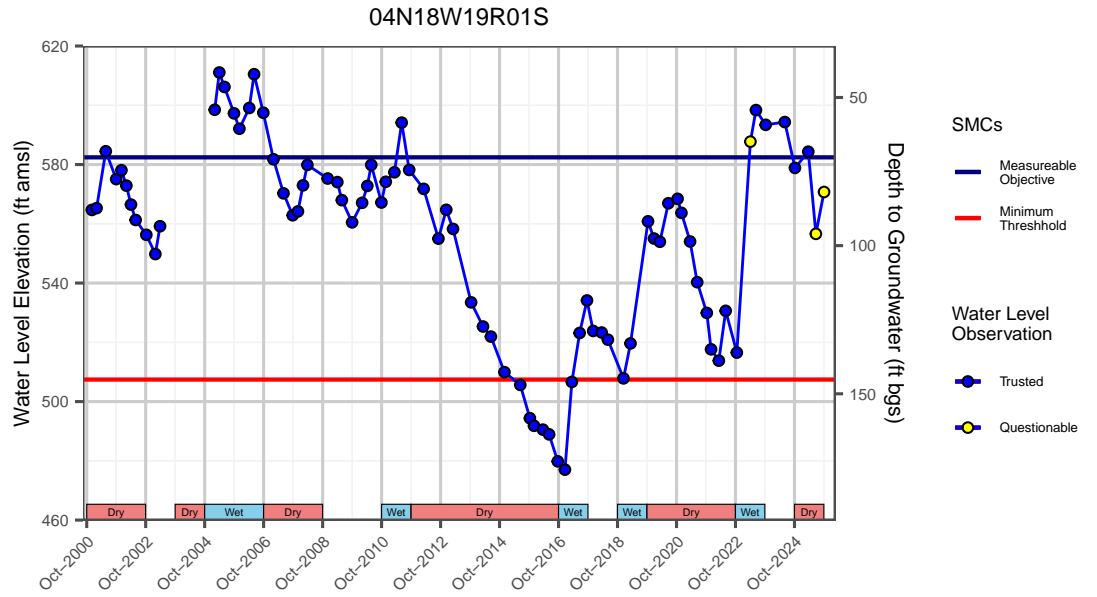
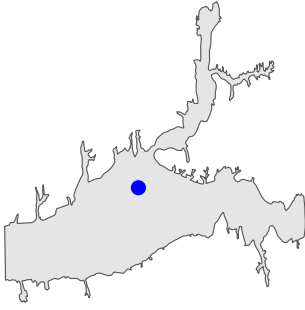


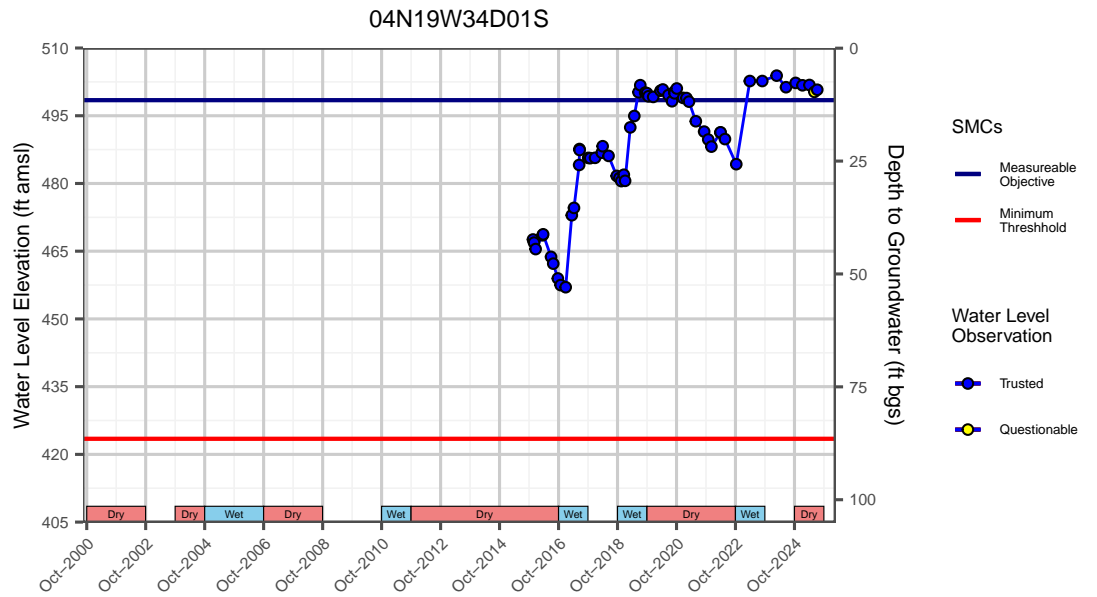
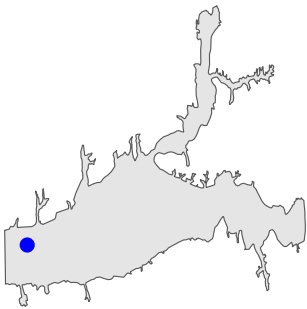
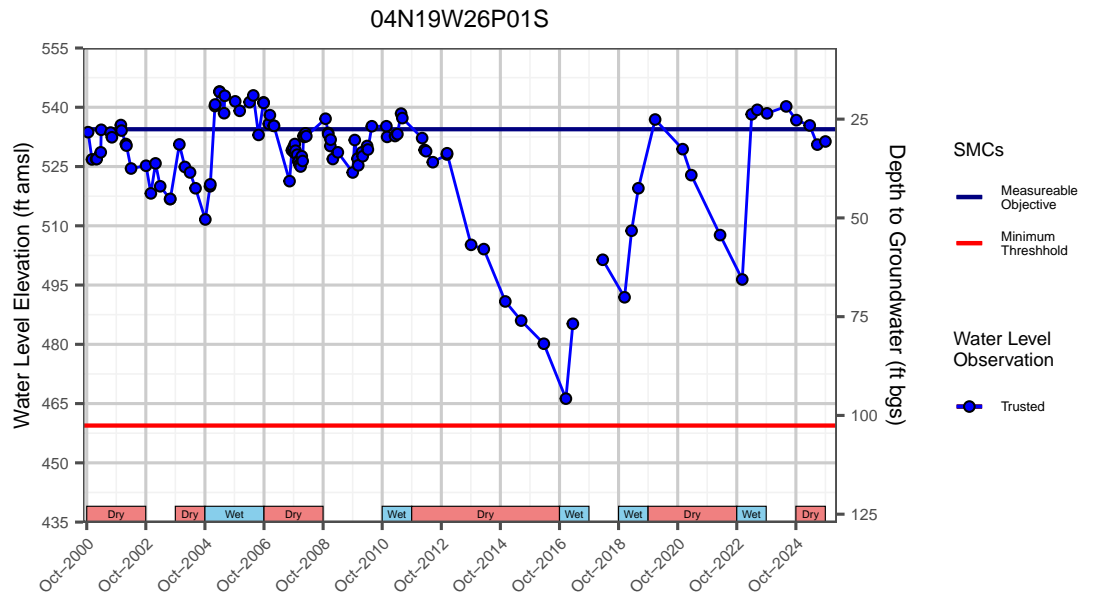
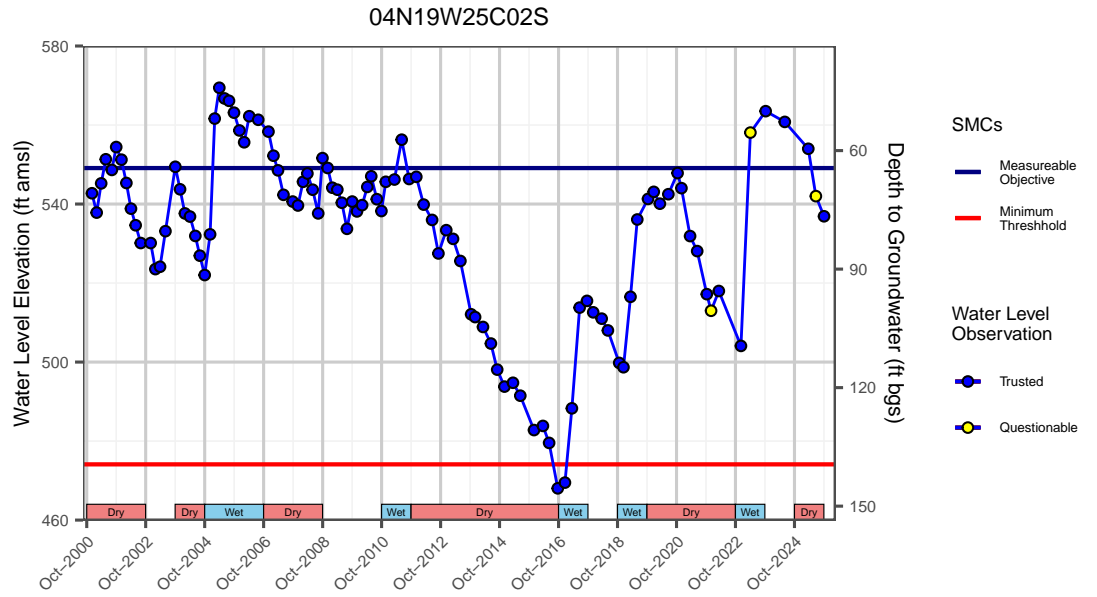
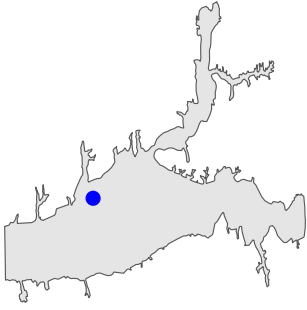
PIRU SUBBASIN ANNUAL REPORT  
**Groundwater Pumping and Change in Storage**  
**WY 2000-2025**

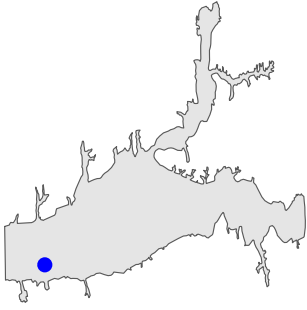


# Appendix A

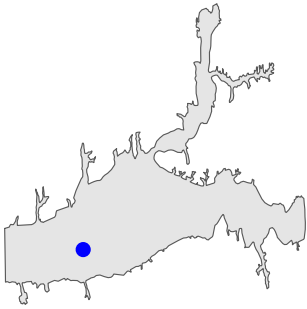
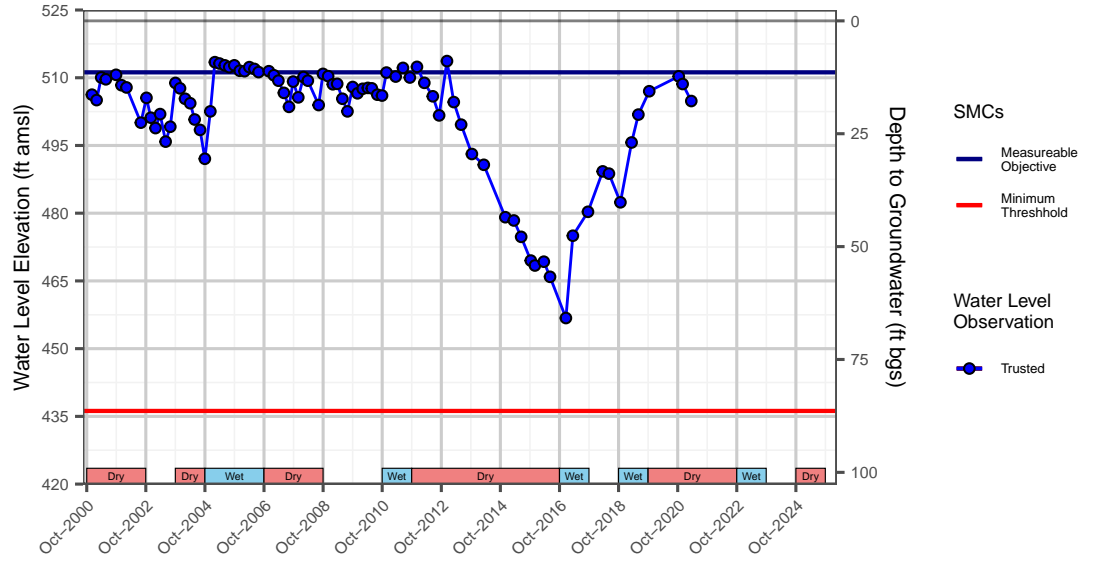
## Representative Monitoring Point Hydrographs



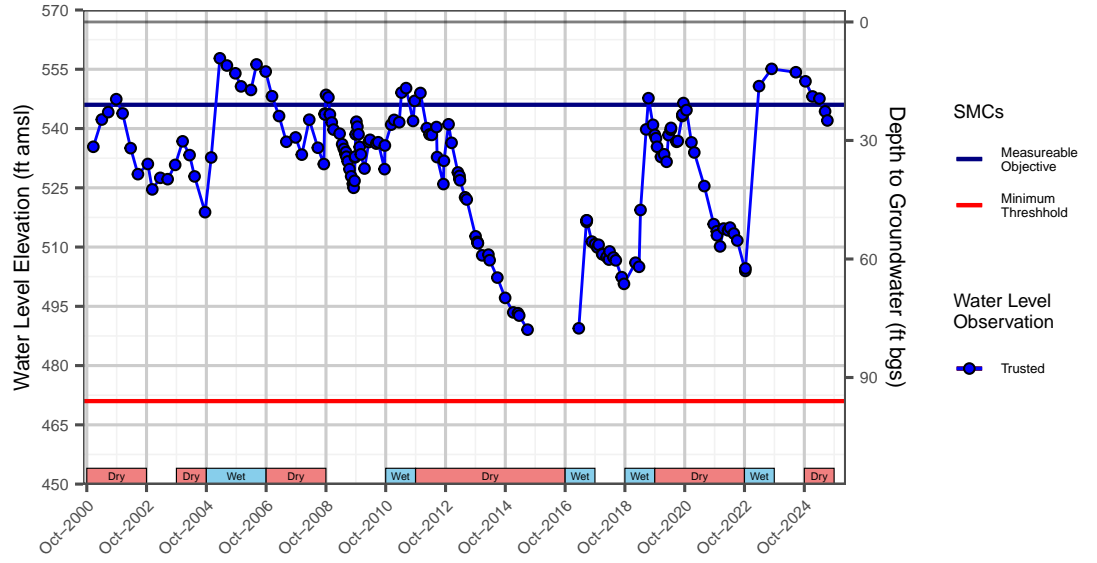




04N19W34K01S



04N19W36D01S





**Item No.**        **4C Motion**

**DATE:**            March 12, 2026 (for March 19, 2026, meeting)

**TO:**                Board of Directors

**FROM:**            Anthony A. Emmert, Executive Director

**SUBJECT:**        **Amendment to Fiscal Year 2025-2026 Work Plan and Schedule**

### **RECOMMENDED ACTION**

The Board will receive a presentation from staff and DBS&A on proposed changes to the Agency's Fiscal Year 2025-2026 Work Plan items and schedule and provide comments and direction.

### **BACKGROUND**

The planned and budgeted activities for the current Fiscal Year 2025-2026 include:

- Annual Reports and Update of Online Groundwater Database – Preparation of annual reports for the period October 2024 to September 2025, as well as keeping current the online groundwater database. Annual reports will be due to DWR by 01 Apr 2026.

Status: On track for submitting annual reports by 01 Apr 2026. Daniel B. Stephens & Associates (DBS&A) has updated the groundwater database and continues to provide updates.

- Groundwater Data Gaps – Develop updated technical memorandum addressing groundwater and surface water data gaps and plan to address them. This work will progress through the fiscal year.

Status: DBS&A prepared updated technical memorandum highlighting data gaps. United Water Conservation District (UWCD) Water Resources team is working with well owners to add new wells to the monitoring network – this work is progressing, but slowly primarily due to the time it takes to work with property owners.

- East Grove GDE Biological Data Gaps. Biological surveys of the East Grove Groundwater Dependent Ecosystem (GDE) area to better understand the “uses and users” of this important area of interconnected groundwater and surface water at the west end of the Fillmore subbasin.

Status: Stillwater Sciences identified biological data gaps. Stillwater and UWCD Environmental Services team is collecting data. The team will provide an update to the Board within the next few months.

- Sespe Creek Confluence with Santa Clara River Data Gaps. Surface water and groundwater monitoring, along with initial biological surveys of the Sespe Creek-Santa Clara River confluence area to better understand the hydrology and “uses and users” of this area commented on by National Marine Fisheries Service and California Department of Fish and Wildlife. This work to progress through the Fiscal Year 2025-2026.

Status: UWCD Water Resources staff identified streamflow data gaps and have been collecting streamflow data along lower Sespe Creek and in the confluence area. UWCD Environmental Services team is collecting data and will provide an update to the Board within the new few months.

- Cienega Springs Study-Project Entitlements & Grant Funding – Complete development of study plan-pilot project prospectus, including cost estimates, for a study-pilot project to improve the recovery of the Cienega area following periods of drought, in conjunction with the California Department of Fish and Wildlife, the Santa Clara River Conservancy, the University of California, Santa Barbara, and The Nature Conservancy. The primary focus of work for Fiscal Year 2025-2026 will be developing the access agreements and partnerships for the project, CEQA compliance, and applying for grant funds for the construction. This effort will progress through the fiscal year, with the goal of having the next phase ready for inclusion in the Fiscal Year 2026-2027 budget.

Status: The proposed pilot study has not progressed due to land access challenges. Staff expects that modeling results will provide clarification regarding interconnected surface waters. Unless property access issues resolve quickly, staff recommends the Agency consider alternatives.

- Domestic Well Drought Vulnerability Evaluation – Address known data gap by gathering and analyzing well construction and maintenance information on the shallowest of production water wells and evaluate vulnerability to multiple-year droughts utilizing updated groundwater model. This work will progress through the fiscal year.

Status: The Board Clerk, UWCD Finance team, and Water Resources team continue to follow-up with owners of shallow wells. Staff will provide the Board with a status report in the near future. Once the data collection phase is completed, Agency staff and DBS&A will confer with California Department of Water Resources staff on the adequacy of the data collection effort. Once data collection is completed, DBS&A will analyze the vulnerability of the shallow wells and produce a technical memorandum.

- Refine Surface Water and Groundwater Models – Complete updates of the regional groundwater model and address known data gaps, to better characterize surface water flows by stream reach and analyze groundwater pumping’s effects on surface water flows and shallow production wells. This work will occur through the fiscal year.

Status: UWCD Water Resources staff have completed updating the Santa Clara River Valley model with finer discretion, completed calibration, and run the base case scenario. DBS&A is refining the projected pumping from each well – results will be incorporated into the updated

model within the next few days. UWCD staff will then run the Agency's scenarios. The schedule for modeling work was severely affected by UWCD Water Resources staff's unavailability for much of 2025 due to their participation in the ongoing groundwater litigation in the Oxnard and Pleasant Valley subbasins. The schedule slip in the groundwater modeling negatively affected several other Agency work tasks.

- Annual Subsidence Evaluation – Utilize data gathered by California Department of Water Resources on subsidence and develop technical memorandum, which will support the amended GSPs. This work will progress through the fiscal year, as the data becomes available.

Status: DBS&A is advancing the subsidence evaluation. The recent guidance document from DWR was helpful in clarifying documentation needed for basins that do not have active subsidence.

- Five-Year Periodic Evaluations. Preparation of Five-Year Periodic Evaluations for the Agency's two basins. The evaluations are due to DWR in January 2027. The work will proceed through the Fiscal Year 2025-2026 and into the next fiscal year.

Status: This task has been hindered by the schedule slip for modeling. Completion of the Five-Year Periodic Evaluations are required by SGMA. Work will need to be accelerated over the next several months. This is a priority task for the Agency.

- Amendment of Groundwater Sustainability Plans and Development of Programs/Projects – Development of updated GSPs addressing recommended corrective actions from DWR. The updated GSPs will be submitted to DWR in January 2027, along with the Periodic Evaluations. The work will proceed through the Fiscal Year 2025-2026 and into the next fiscal year.

Status: This task has also been hindered by the schedule slip for the modeling. There is now insufficient time to complete both Five-Year Periodic Evaluations and updated GSPs. There are no negative consequences for not updating the GSPs. Staff recommends that the Agency pause this task.

- As-Needed Technical Support. General support from Agency's technical team (DBS&A, Stillwater Sciences, UWCD) on unanticipated efforts to address new laws or regulations; meeting attendance, etc.

Status: This task has been ongoing as planned.

- Policies Update – Review and update the Agency's bylaws/policies, with focus on compliance with the Government Accounting Standards Board (GASB) standards.

Status: This task has been ongoing as planned.

- Well Permitting Review Process – on hold – not expected to progress during Fiscal Year 2025-2026.

Status: This task remains on hold.

- Export Policy – on hold – not expected to progress during Fiscal Year 2025-2026.

Status: This task remains on hold.

The Agency’s staff and consultant team is developing the Work Plan for the Fiscal Year 2026-2027. Direction received from the Board will be incorporated into the Work Plan for consideration by the Board during the April and May 2026 Board meetings.

**FISCAL IMPACT**

Delaying tasks will result in reduced expenditures for the current fiscal year and next fiscal year.

**ATTACHMENTS**

Attachment A – Updated Schedule

Proposed Motion: Provide comments and directions on the proposed changes to the Agency’s Fiscal Year 2025-2026 Work Plan and Schedule.

1<sup>st</sup>: Director \_\_\_\_\_ 2<sup>nd</sup>: Director \_\_\_\_\_

Voice/Roll call vote:

Director Garnica:

Director Hauss:

Director Jackson:

Director Kimball:

Director Long:

Director Meneghin:

# Fillmore and Piru Basins Groundwater Sustainability Master Schedule

Updated Feb 2026

